

Instr. Number: 2022-1110
 Recorded: 6/14/2022 at 3:22:33.0 PM
 Pages 1
 County Recording Fee: \$7.00
 Iowa E-Filing Fee: \$3.00
 Combined Fee: \$10.00
 Revenue Tax:
 Shirley Troyna RECORDER
 Chickasaw County, Iowa

Prepared by & Return to: Herold - Reicks Surveying, 18 East Main Street, New Hampton, IA 50659, Ph. 641-394-2725

Corrective United States Public Land Survey Corner Certificate

Land Survey Monument situated in
 Section 25, Township 95 North, Range 13 West of the Fifth Principal Meridian, Chickasaw County, Iowa.
 On file in Document #2010-0465 in the County Recorder's Office.

This certificate is being prepared in compliance with Iowa Code Chapter 355.11 because:

- There is no certificate on file for this corner.
- There are no longer three valid ties of record.
- There are changes to reference ties of record.
- There is change of monumentation of record.
- To clarify description of record monument (ties).

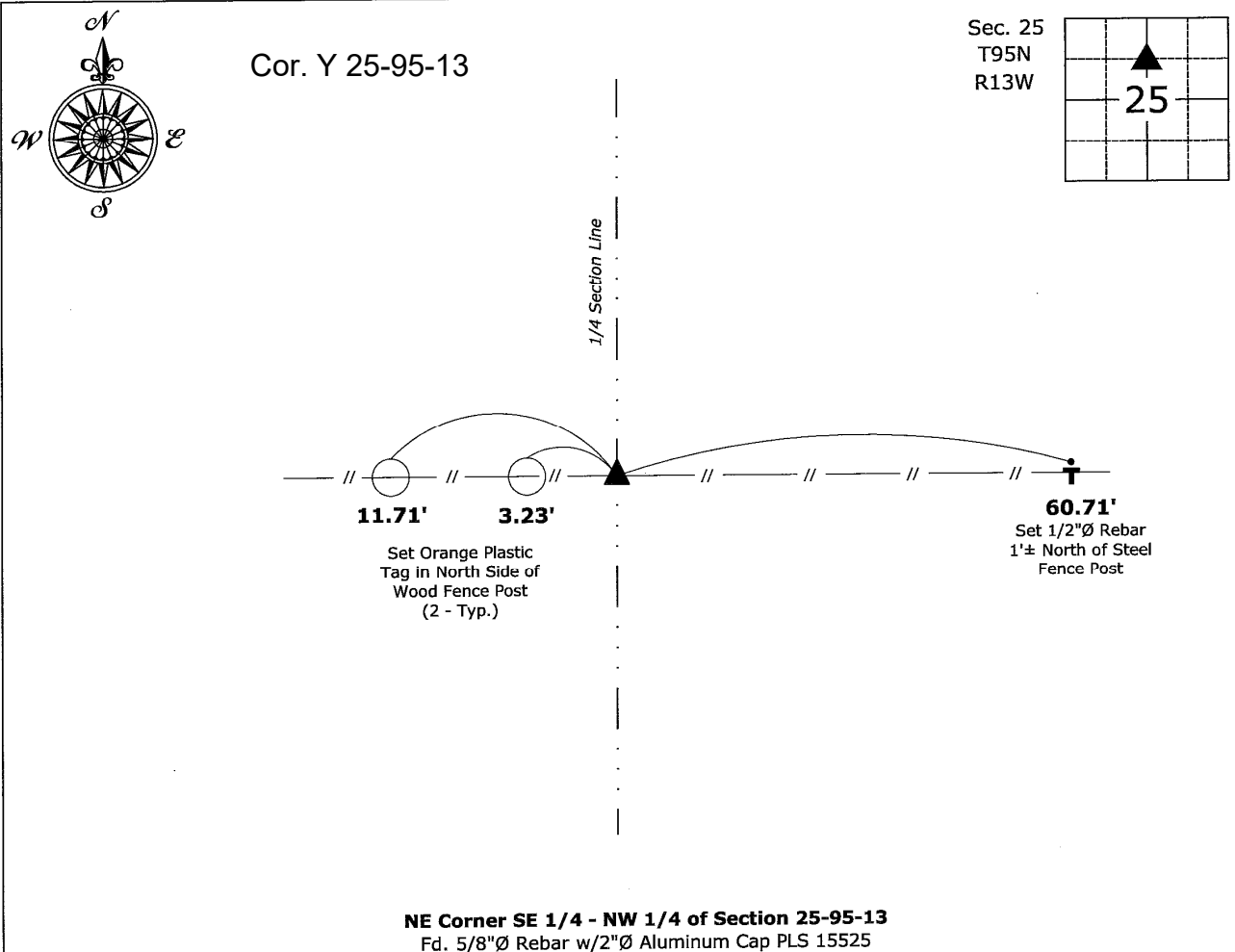
Monument Description and Remarks:

NE Corner SE 1/4 - NW 1/4: Found 5/8"Ø Rebar w/2"Ø Alum. Cap with information obtained from the previously recorded Section Corner Certificate.

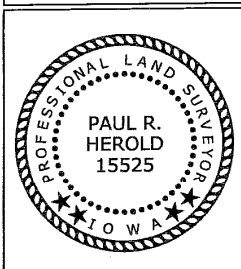
Note this Corrective Section Corner Certificate is to supersede the one Recorded April 2, 2010, as Document #2010-0465 in order to correct the Corner designation location.

Plan View

(Show a minimum of three reference ties to durable physical objects, relevant monuments and physical conditions that will enable recovery of the corner.)



NE Corner SE 1/4 - NW 1/4 of Section 25-95-13
 Fd. 5/8"Ø Rebar w/2"Ø Aluminum Cap PLS 15525



I hereby certify that this land surveying document was prepared and the related survey work was performed by me or under my direct personal supervision and that I am a duly licensed Land Surveyor under the laws of the State of Iowa.
Paul R. Herold 6.13.22
 Paul R. Herold Date:
 License number 15525
 My license renewal date is December 31, 2022.
 Sheets covered by this seal: Individual sheet only

List Corner to be Indexed			
Corner	Section	Twp.	Range
NE-SE-NW	25	95	13
Project Number: 2010-026			
FB: Chickasaw County 2, Pgs. 35-38			

File: S:_Projects - NHO\County Control Systems - NHO\CHICKASAW\CHICK-28 (New Hampton)\CHICK-28 - 2022 - SW-R1.dwg, 6/13/2022 3:48:05 PM