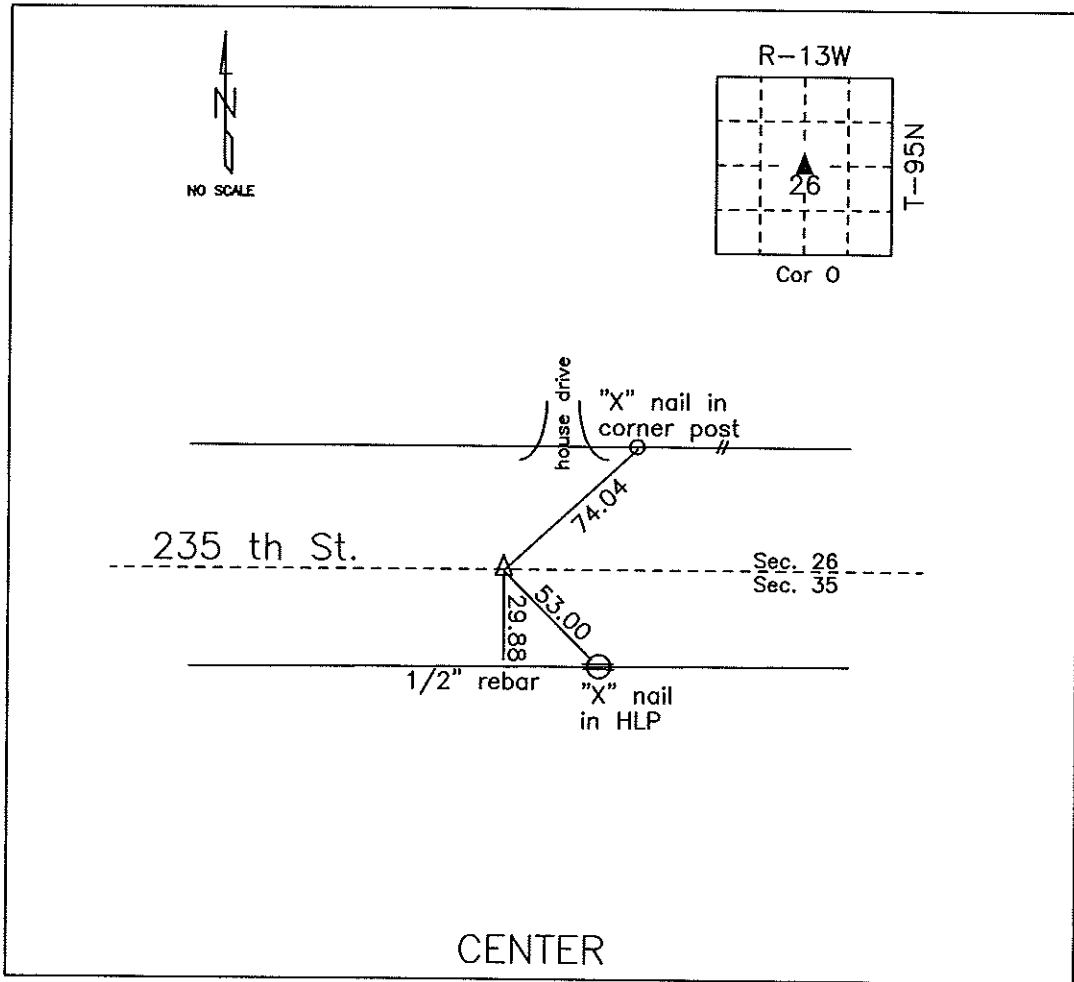


# COUNTY ENGINEER'S SECTION CORNER PRESERVATION RECORD

LAND SURVEY MONUMENT LOCATED IN SECTION 26, TOWNSHIP 95 N  
NORTH, RANGE 13 W, OF THE 5TH P.M. Chickasaw COUNTY, IOWA  
PREVIOUSLY RECORDED COUNTY ENGINEER'S OFFICE



**MONUMENT DESCRIPTION AND NARRATIVE** Found 08/04/09

Set iron pin 6-7-54 Previously recorded as corner "O" in Chickasaw County Engineer's Tie Book

All ties are slope chained.

I AM NOT A REGISTERED LAND SURVEYOR UNDER THE LAWS OF THE STATE OF IOWA.

JIM FOSTER CHICKASAW CO. DATE: 08/04/09