

Herold - Reicks Surveying, 10 East Main Street, New Hampton, IA 50659, Ph. 641-394-2725, Fax. 641-394-2718

UNITED STATES PUBLIC LAND SURVEY CORNER CERTIFICATE

Land Survey Monuments situated in Section <sup>23</sup>25, Township 95 North, Range 13 West of the Fifth Principal Meridian, Chickasaw County, Iowa. 1.) Previously recorded in Doc. #2003-3497, in the County Recorder's office, 2.) Previously recorded in Bk. 150, Pg. 372 in the County Recorder's office.

This certificate is being prepared in compliance with Iowa Code Chapter 355.11 because:

- There is no certificate on file for this corner.
- There are no longer three valid ties of record.
- 1.) & 2.)  There are changes to reference ties of record.
- There is change of monumentation of record.
- To clarify description of record monument (ties).

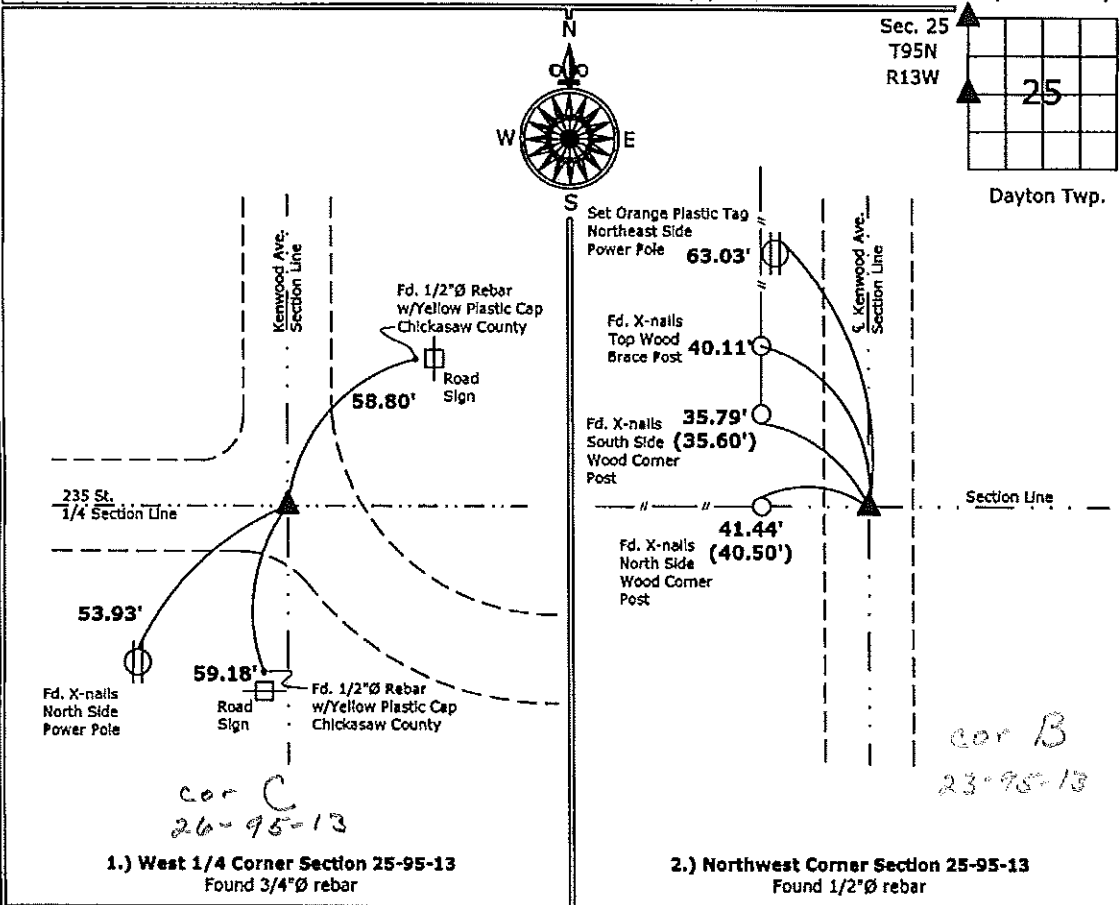
Monument Description and Remarks:

1.) **West 1/4 Corner:** Found 3/4"Ø rebar from information obtained from the previous Section Corner Certificate, the ties have changed and are being updated.

2.) **Northwest Corner:** Found 1/2"Ø rebar from information obtained from previous Section Corner Certification for Section 24-95-13, retying Corner to update ties & graphics.

PLAN - VIEW

(Show a minimum of three reference ties to durable physical objects, relevant monuments and physical conditions that will enable recovery of the corner.)



1.) West 1/4 Corner Section 25-95-13  
Found 3/4"Ø rebar

2.) Northwest Corner Section 25-95-13  
Found 1/2"Ø rebar



I hereby certify that this land surveying document was prepared and the related survey work was performed by me or under my direct personal supervision and that I am a duly licensed Land Surveyor under the laws of the State of Iowa.

*Paul R. Herold* 4-2-10  
Paul R. Herold Date:

License number 15525  
My license renewal date is December 31, 2010.  
Sheets covered by this seal: Individual sheet only

| List Corners to be Indexed |         |      |       |
|----------------------------|---------|------|-------|
| Corners                    | Section | Twp. | Range |
| W 1/4                      | 25      | 95   | 13    |
| NW                         | 25      | 95   | 13    |

Project Number: 2010-026

FB: Chickasaw County 2, Pgs. 35-38

2003 NOV 14 AM 9 29

CINDY MESSERSMITH  
 COUNTY RECORDER

TEKIPPE ENGINEERING, P.C., 128 South Vine Street, West Union, Iowa 52176 Phone (563) 422-6131

UNITED STATES PUBLIC LAND SURVEY CORNER CERTIFICATE

OF  
 Land Survey Monuments situated in Section 25, Township 95 North, Range  
13 West of the Fifth Principal Meridian, CHICKASAW County, Iowa.  
 Previously recorded in none in County Recorder's Office.  
 (book, page, document number, etc.)

(Show reason for preparing this certificate, the evidence and detailed procedures used in establishing the corner positions and monumentation found or placed.)

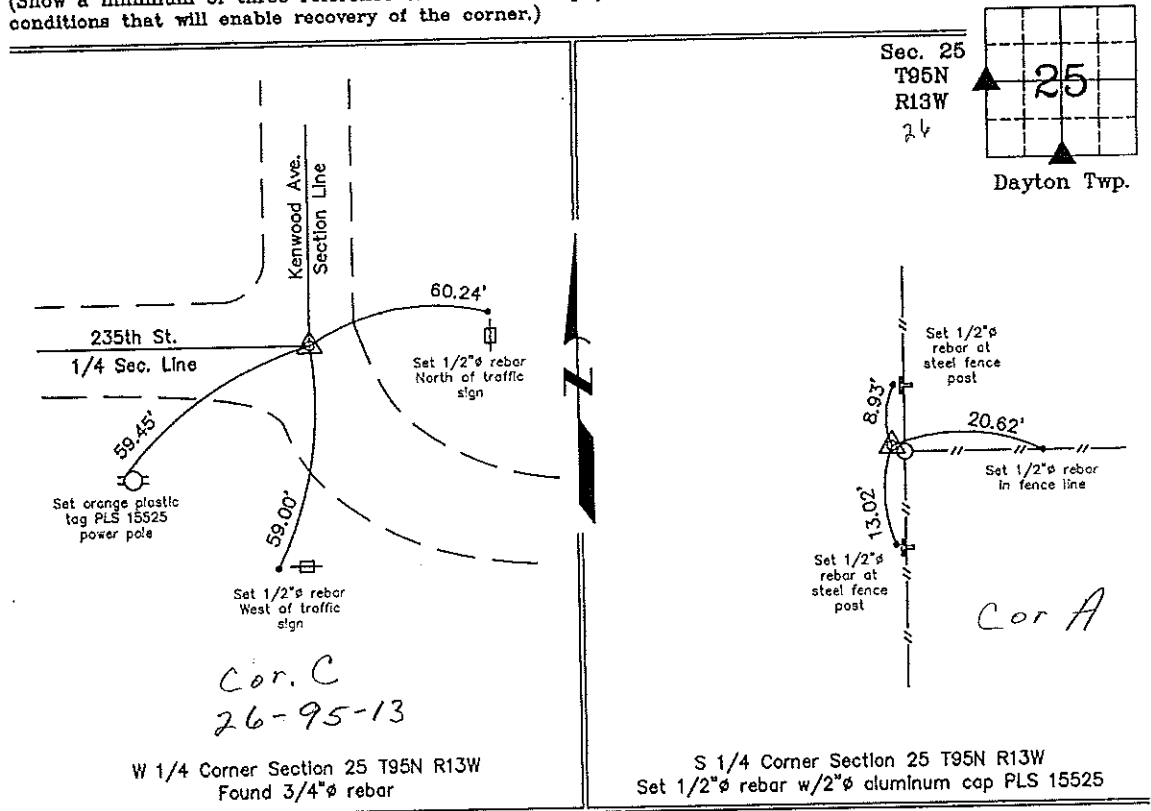
Monument Description and Remarks: W 1/4 Corner Section 25 T95N R13W: Found 3/4"Ø rebar with information obtained from the Chickasaw County Engineer's Office in Field Book Dayton Twp. Corner Ties, Corner 'C'.

S 1/4 Corner Section 25 T95N R13W: Set 1/2"Ø rebar w/2"Ø aluminum cap PLS 15525 by extending a line Easterly from the SE Corner through a Iowa D.O.T. ROW monument and intersecting a possession fence.

PLAN - VIEW

Project Number 03198.LS  
 FB. 46K PG. 30-33

(Show a minimum of three reference ties to durable physical objects, relevant monuments and physical conditions that will enable recovery of the corner.)



W 1/4 Corner Section 25 T95N R13W  
 Found 3/4"Ø rebar

S 1/4 Corner Section 25 T95N R13W  
 Set 1/2"Ø rebar w/2"Ø aluminum cap PLS 15525



I hereby certify that this land surveying document was prepared and the related survey work was performed by me or under my direct personal supervision and that I am a duly licensed Land Surveyor under the laws of the State of Iowa.

*Paul R. Herold* 11-12-03  
 Paul R. Herold Date  
 License number 15525  
 My license renewal date is December 31, 2004.  
 Sheets covered by this seal: Individual

| List Corners to be Indexed |         |      |       |
|----------------------------|---------|------|-------|
| Corners                    | Section | Twp. | Range |
| W 1/4                      | 25      | 95N  | 13W   |
| S 1/4                      | 25      | 95N  | 13W   |

Filed 12-15-03

X:\Section Corners\Sec. 25\25-95-13kw.dwg