

TeKIPPE ENGINEERING, P.C., 126 South Vine Street, West Union, Iowa 52176 Phone (563) 422-5131

UNITED STATES PUBLIC LAND SURVEY CORNER CERTIFICATE

OF

Land Survey Monuments situated in Section 23, Township 95 North, Range 13 West of the Fifth Principal Meridian, CHICKASAW County, Iowa. Previously recorded in none in County Recorder's Office.
 (book, page, document number, etc.)

(Show reason for preparing this certificate, the evidence and detailed procedures used in establishing the corner positions and monumentation found or placed.)

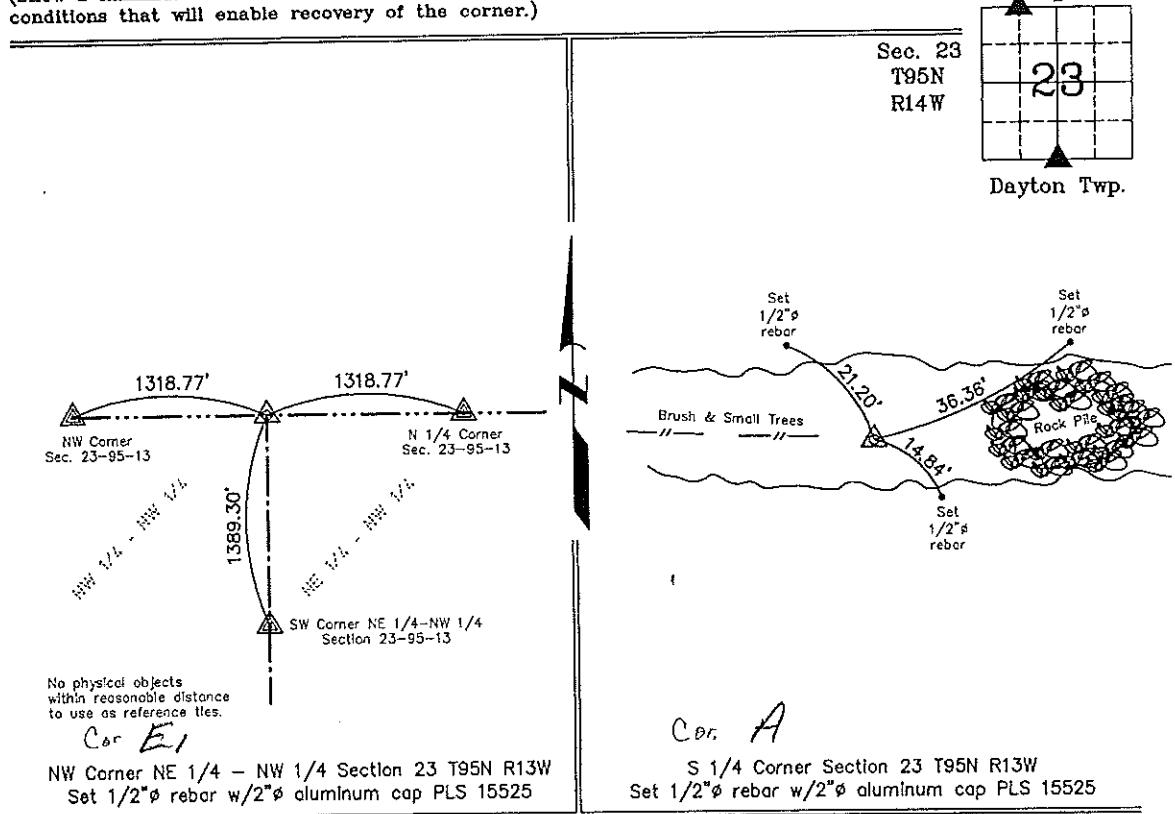
Monument Description and Remarks: NW Corner NE 1/4 - NW 1/4 Section 23 T95N R13W: Set 1/2"Ø rebar w/2"Ø aluminum cap PLS 15525 equidistant and on line between the NW Corner and the N 1/4 Corner.

S 1/4 Corner Section 13 T95N R13W: Set 1/2"Ø rebar w/2"Ø aluminum cap PLS 15525 at the intersection of the extension of possession line fences.

PLAN - VIEW

Project Number 03200.LS
 FB. 46K FG. 34-36

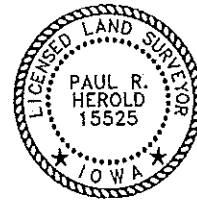
(Show a minimum of three reference ties to durable physical objects, relevant monuments and physical conditions that will enable recovery of the corner.)



No physical objects within reasonable distance to use as reference ties.
 Cor. E1

NW Corner NE 1/4 - NW 1/4 Section 23 T95N R13W
 Set 1/2"Ø rebar w/2"Ø aluminum cap PLS 15525

Cor. A
 S 1/4 Corner Section 23 T95N R13W
 Set 1/2"Ø rebar w/2"Ø aluminum cap PLS 15525



I hereby certify that this land surveying document was prepared and the related survey work was performed by me or under my direct personal supervision and that I am a duly licensed Land Surveyor under the laws of the State of Iowa.
 Paul R. Herold 11-12-03
 Paul R. Herold Date
 License number 15525
 My license renewal date is December 31, 2004.
 Sheets covered by this seal: Individual

| List Corners to be Indexed | | | |
|----------------------------|---------|------|-------|
| Corners | Section | Twp. | Range |
| NW-NE-NW | 23 | 95N | 13W |
| S 1/4 | 23 | 95N | 13W |

Filed 12-15-03

X:\Section Corners\Sec. 23\23-95-13bw.dwg