

Herold - Recks Surveying, 10 East Main Street, New Hampton, IA 50659, Ph. 641-394-2725, Fax. 641-394-2718

UNITED STATES PUBLIC LAND SURVEY CORNER CERTIFICATE

Land Survey Monuments situated in Section ²³25, Township 95 North, Range 13 West of the Fifth Principal Meridian, Chickasaw County, Iowa. 1.) Previously recorded in Doc. #2003-3497, in the County Recorder's office, 2.) Previously recorded in Bk. 150, Pg. 372 in the County Recorder's office.

This certificate is being prepared in compliance with Iowa Code Chapter 355.11 because:

- There is no certificate on file for this corner.
- There are no longer three valid ties of record.
- 1.) & 2.) There are changes to reference ties of record.
- There is change of monumentation of record.
- To clarify description of record monument (ties).

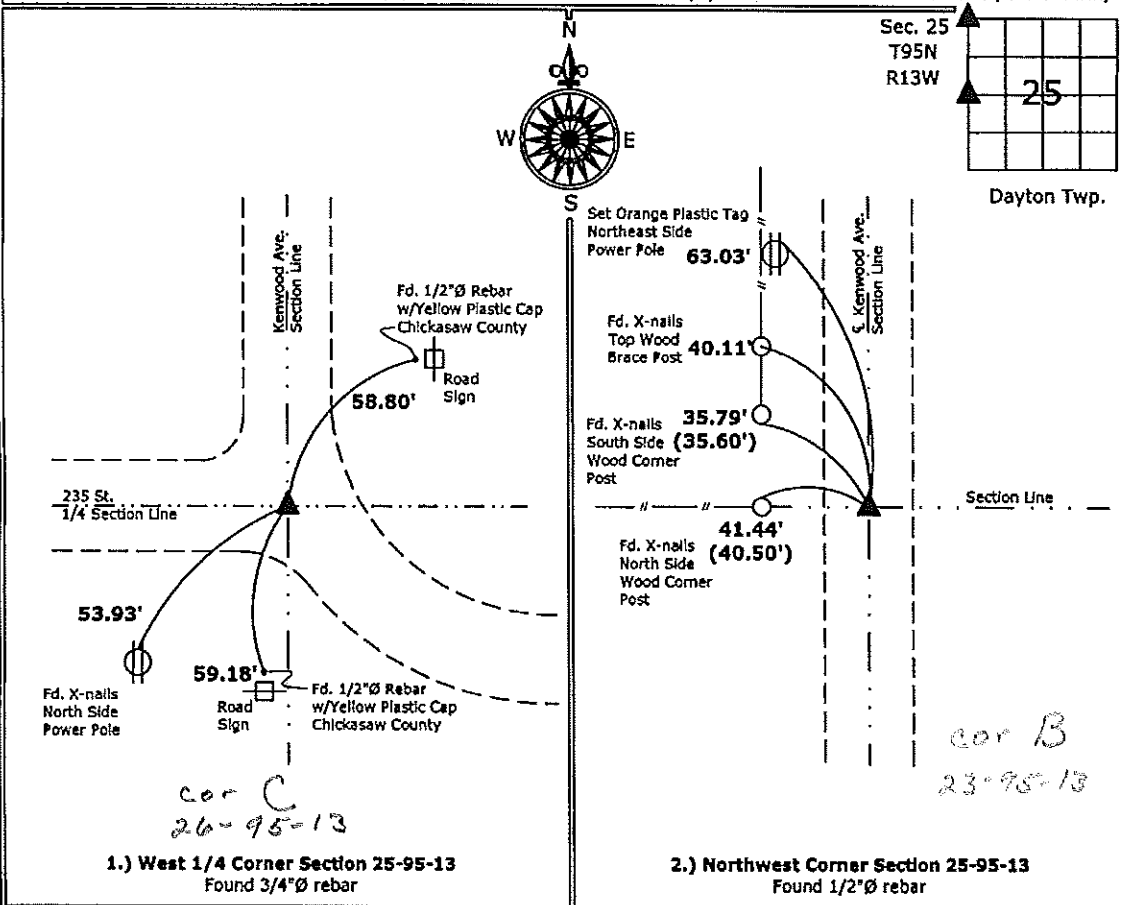
Monument Description and Remarks:

1.) West 1/4 Corner: Found 3/4"Ø rebar from information obtained from the previous Section Corner Certificate, the ties have changed and are being updated.

2.) Northwest Corner: Found 1/2"Ø rebar from information obtained from previous Section Corner Certification for Section 24-95-13, retying Corner to update ties & graphics.

PLAN - VIEW

(Show a minimum of three reference ties to durable physical objects, relevant monuments and physical conditions that will enable recovery of the corner.)



I hereby certify that this land surveying document was prepared and the related survey work was performed by me or under my direct personal supervision and that I am a duly licensed Land Surveyor under the laws of the State of Iowa.

Paul R. Herold 4-2-10
 Paul R. Herold Date:
 License number 15525
 My license renewal date is December 31, 2010.
 Sheets covered by this seal: Individual sheet only

List Corners to be Indexed			
Corners	Section	Twp.	Range
W 1/4	25	95	13
NW	25	95	13

Project Number: 2010-026
 FB: Chickasaw County 2, Pgs. 35-38

File: S:\Projects\New Hampton\New SCC.dwg, 4/2/2010 11:49:16 AM

UNITED STATES PUBLIC LAND SURVEY CORNER CERTIFICATE

OF 23

Land Survey Monuments situated in Section 24, Township 95, Range 13, of the Fifth Principal Meridian, CHICKASAW County, Iowa. Previously recorded in _____ in County Recorder's Office.

(book, page, document number, etc.)
 (Show reason for preparing this certificate, the evidence and detailed procedures used in establishing the corner positions and monumentation found or placed.)

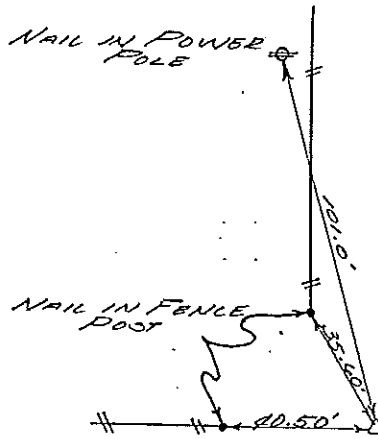
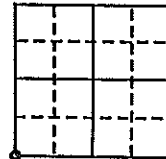
Monument Description and Remarks: _____

PLAN - VIEW

(Show a minimum of three reference ties to durable physical objects, relevant monuments and physical conditions that will enable recovery of the corner.)

Section 23-95-13
 As referred to in
 Engr Tie Book

SW CORNER
 Pd. 1/2" BAR



Cor. B
 23-95-13

I hereby certify that the survey work was completed and this certificate was prepared by me or under my direct personal supervision and that I am a duly registered land surveyor under the laws of the state of Iowa.

Signature: L. P. Erdman
 Name typed or printed: L. P. ERDMAN

Date: 9-30-92 Reg. No. 2886

Corners	List Corners to be Indexed Section	Twp	Range
SW	24	95	13

Placed in
 Tie 11/6/92

SEAL

