

Section 28-95-13
As referred to in
Engr. Tie Book

Chickasaw Co. Recorder
Cindy Messersmith
Fee Book 2008-0687
04/15/2008 @0400PM
SEC COR CERT
Book: Page: # Pages: 1
Total Fees: \$7.00

Herold - Reicks Surveying, 25 1/2 East Main Street, Suite 204, New Hampton, IA 50659, Ph. 648-3942725

CORRECTIVE UNITED STATES PUBLIC LAND SURVEY CORNER CERTIFICATE

Land Survey Monuments situated in:

Section 27, Township 95 North, Range 13 West of the Fifth Principal Meridian,
Chickasaw County, Iowa. Previously recorded in None

(book, page, document number, etc.)

In County Recorder's Office.

(Show reason for preparing this certificate, the evidence and detailed procedures used in establishing the corner positions and monumentation found or placed.)

Monument Description and Remarks:

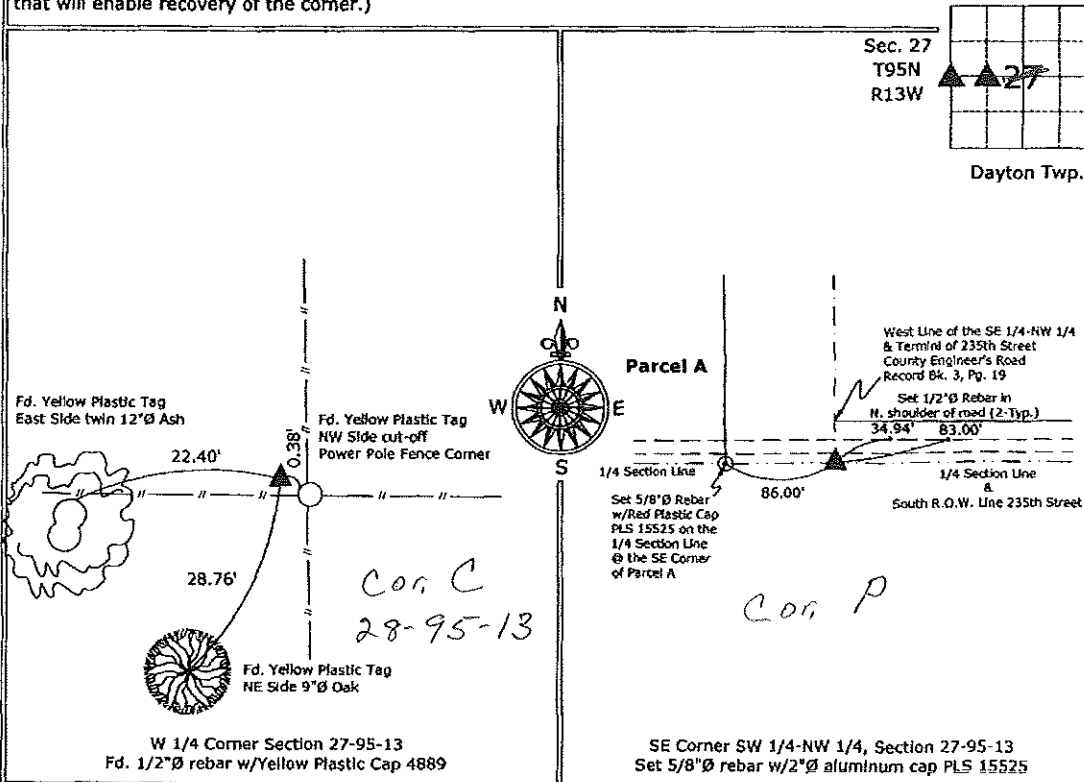
W 1/4 Corner Section 27-95-13: Fd. 1/2"Ø rebar w/Yellow Plastic Cap 4889 from information on a survey and plat made by Jon W. Yonda, Recorded Document #2006-1644, on file in the Chickasaw County Recorder's Office, New Hampton, Iowa.

SE Corner SW 1/4-NW 1/4, Section 27-95-13: Set 5/8"Ø rebar w/2"Ø aluminum cap PLS 15525, equidistant and on line between the W 1/4 Corner and the Calculated Center of Section.

This Corrective Section Corner Certificate is to supersede the one recorded 3-11-08, Doc. #2008-0463 in order to correct the street names.

PLAN - VIEW

(Show a minimum of three reference ties to durable physical objects, relevant monuments and physical conditions that will enable recovery of the corner.)



I hereby certify that this land surveying document was prepared and the related survey work was performed by me or under my direct personal supervision and that I am a duly licensed Land Surveyor under the laws of the State of Iowa.

Paul R. Herold 4-11-08
Paul R. Herold Date:
License number 15525
My license renewal date is December 31, 2008.
Sheets covered by this seal: Individual sheet only

List Corners to be Indexed			
Corners	Section	Twp.	Range
W 1/4	27	95	13
SE-SW-NW	27	95	13

Project Number: 2008-014
FB: Chickasaw County 1, Pgs. 61-63

File: S:_Projects\2008-014\dwg\2008-014.dwg, 4/11/2008 9:05:10 AM