

Chickasaw Co. Recorder  
 Cindy Messersmith  
**Fee Book 2008-1457**  
 07/28/2008 @1057AM  
 SCC SEC COR CERT  
 Book: Page: # Pages: 1  
 Total Fees: \$7.00

Herold - Recks Surveying, 25 1/2 East Main Street, Suite 204, New Hampton, IA 50659, Ph. 641-394-2725

### UNITED STATES PUBLIC LAND SURVEY CORNER CERTIFICATE

Land Survey Monuments situated in Section 27, Township 95 North, Range 13 West of the Fifth Principal Meridian, Chickasaw County, Iowa. Previously not recorded in the Chickasaw County Recorder's office.

This certificate is being prepared in compliance with Iowa Code Chapter 355.11 because:

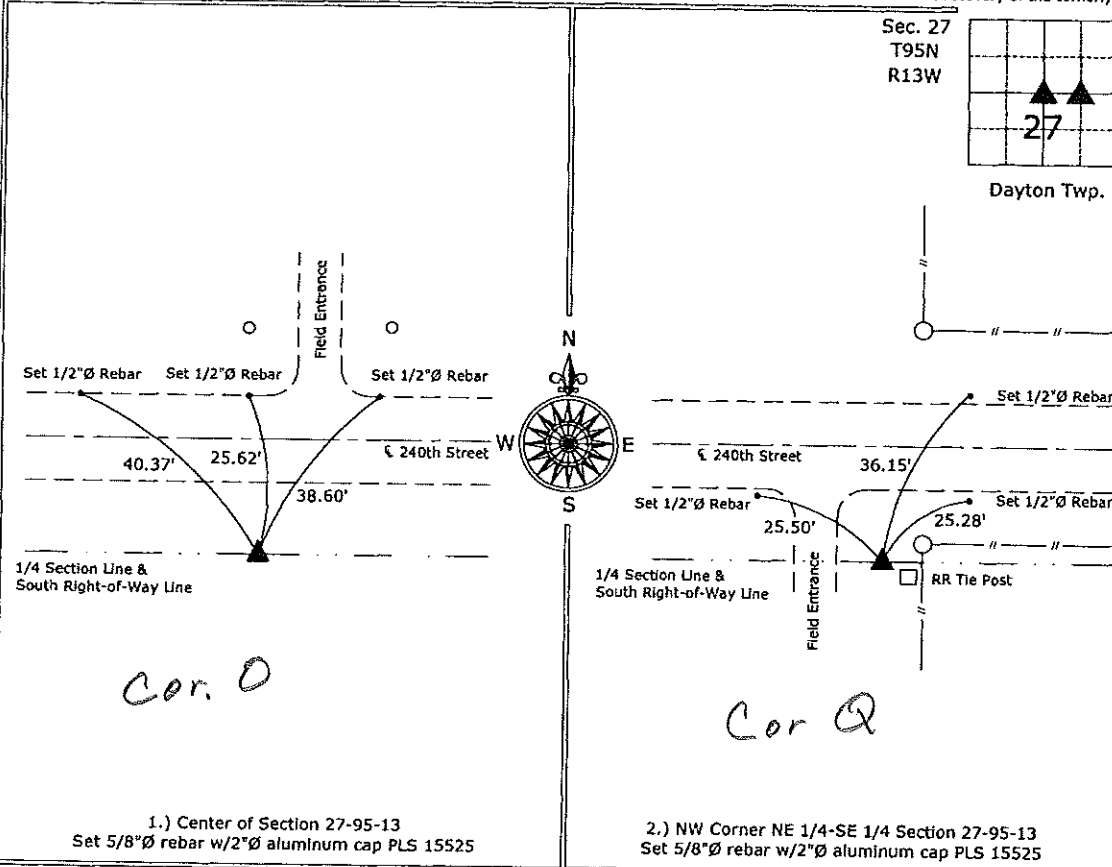
- There is no certificate on file for these corners.
- There are no longer three valid ties of record.
- There are changes to reference ties of record.
- There is change of monumentation of record.
- To clarify description of record monument (ties).

**Monument Description and Remarks:**

- 1.) Center of Section 27-95-13: Set 5/8"Ø rebar w/2"Ø aluminum cap PLS 15525 at the intersection of the Quarter Section Lines.
- 2.) NW Corner NE 1/4-SE 1/4 Section 27-95-13: Set 5/8"Ø rebar w/2"Ø aluminum cap PLS 15525 equidistant and on line between the Center and the E 1/4 Corner of the Section.

#### PLAN - VIEW

(Show a minimum of three reference ties to durable physical objects, relevant monuments and physical conditions that will enable recovery of the corner.)



I hereby certify that this land surveying document was prepared and the related surveying work was performed by me or under my direct personal supervision and that I am a duly licensed Land Surveyor under the laws of the State of Iowa.

*Paul R. Herold* 7-25-08  
 Paul R. Herold Date:  
 License number 15525  
 My license renewal date is December 31, 2008.  
 Sheets covered by this seal: Individual sheet only

List Corners to be Indexed			
Corners	Section	Twp.	Range
Center	27	95	13
NW-NE-SE	27	95	13

Project Number: 2008-068  
 FB: Chickasaw County 1, Pgs. 61-63

File: S:\Projects\2008\2008-068.dwg, 7/25/2008 09:50:41