

Prepared by & Return to: Herald - Reicks Surveying, 10 East Main Street, New Hampton, IA 50659, Ph. 641-394-2725

United States Public Land Survey Corner Certificate

Land Survey Monument situated in
 Section 22, Township 95 North, Range 13 West of the Fifth Principal Meridian, Chickasaw County, Iowa.
 On file in Document #2008-0686 in the County Recorder's office.

This certificate is being prepared in compliance with Iowa Code Chapter 355.11 because:



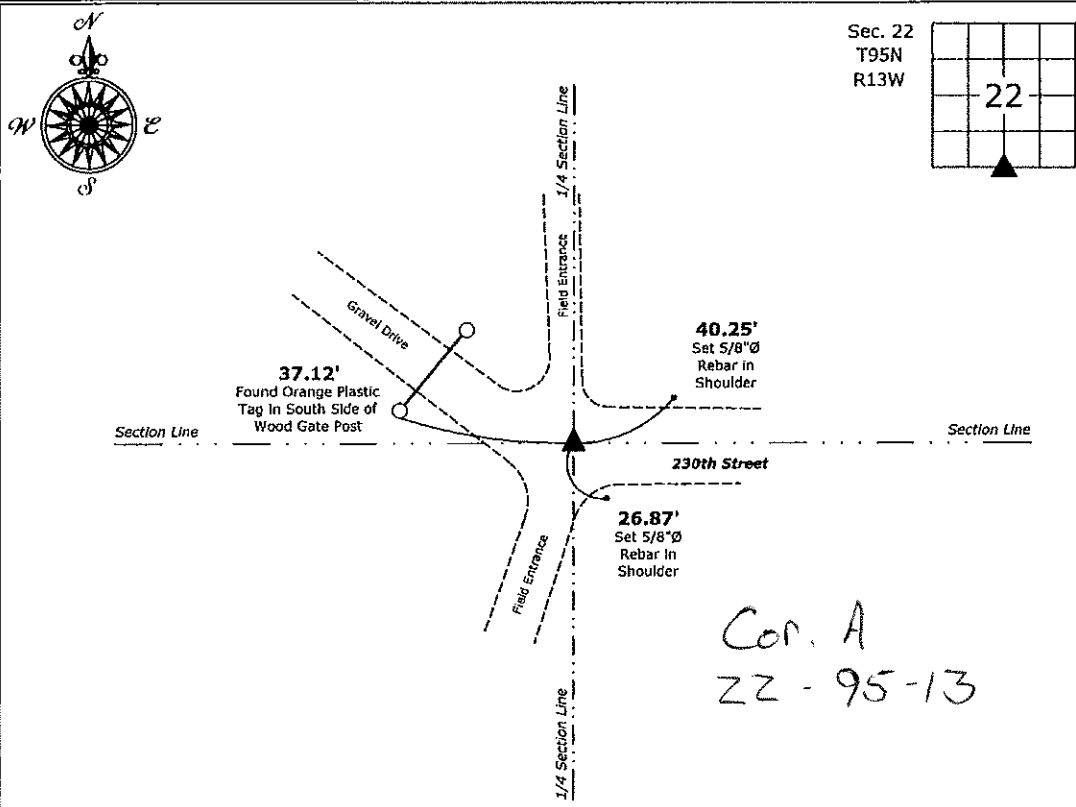
- There is no certificate on file for this corner.
- There are no longer three valid ties of record.
- There are changes to reference ties of record.
- There is change of monumentation of record.
- To clarify description of record monument (ties).

Monument Description and Remarks:

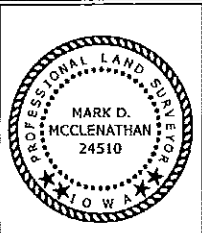
South 1/4 Corner: Set 5/8"Ø rebar w/2"Ø aluminum cap PLS 24510 at the record location as shown on a Survey and Plat recorded as Doc. #2008-0462 and with information obtained from previous Section Corner Certificate, Doc. #2008-0686. Set 2 new ties to aid in the future recovery of Corner.

Plan View

(Show a minimum of three reference ties to durable physical objects, relevant monuments and physical conditions that will enable recovery of the corner.)



South 1/4 Corner of Section 22-95-13
 Set 5/8"Ø rebar w/2"Ø aluminum cap PLS 24510



I hereby certify that this land surveying document was prepared and the related survey work was performed by me or under my direct personal supervision and that I am a duly licensed Land Surveyor under the laws of the State of Iowa.

Mark D. McClenathan 2-20-18
 Mark D. McClenathan Date:
 License number 24510
 My license renewal date is December 31, 2019.
 Sheets covered by this seal: Individual sheet only

List Corner to be Indexed			
Corner	Section	Twp.	Range
S 1/4	22	95	13
Project Number: 2018-020			
FB: Chickasaw 8, Pg. 63-64			

File: s:_C3D Projects\County Control Systems\CHICKASAW\CHICK-34\CHICK-34.dwg, 2/20/2018 2:45:16 PM

Chickasaw Co. Recorder
 Cindy Messersmith
Fee Book 2008-0686
 04/15/2008 @0354PM
 SCC SEC COR CERT
 Book: Page: # Pages: 1
 Total Fees: \$7.00

Section 22-95-13
 As referred to in
 Engr. Tie Book

Herold - Reicks Surveying, 25 1/2 East Main Street, Suite 204, New Hampton, IA 50659, Ph. 641-394-2725

CORRECTIVE UNITED STATES PUBLIC LAND SURVEY CORNER CERTIFICATE

Land Survey Monuments situated in:
 Section 22-27, Township 95 North, Range 13 West of the Fifth Principal Meridian,
Chickasaw County, Iowa. Previously recorded in 1.) Doc. #2005-0945
 in County Recorder's Office. 2.) Doc. None

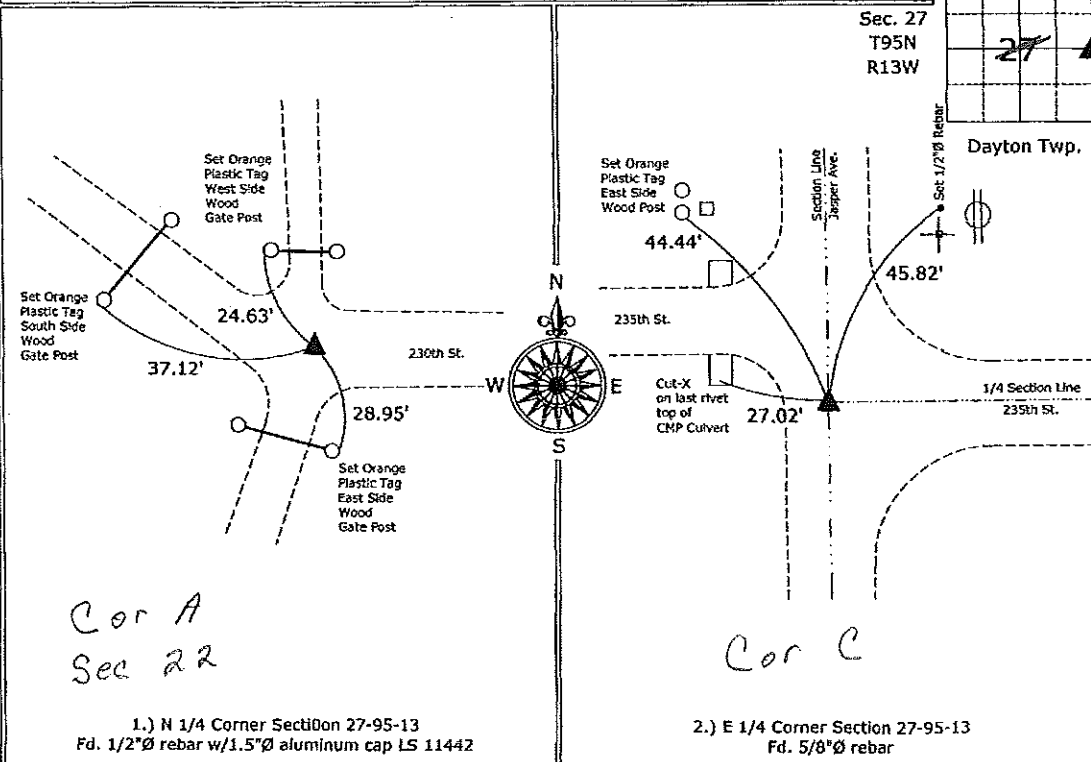
(Show reason for preparing this certificate, the evidence and detailed procedures used in establishing the corner positions and monumentation found or placed.)

Monument Description and Remarks:

- 1.) N 1/4 Corner Section 27-95-13: Fd. 1/2"Ø rebar w/1.5"Ø aluminum cap LS 11442, all of the previous ties are missing, established new ties to update the corner.
- 2.) E 1/4 Corner Section 27-95-13: Fd. 5/8"Ø rebar from information obtained from the County Engineer's Office, in Book "Dayton Twp. corner Ties" Section 27, corner "C". This Corrective Section Corner Certificate is to supersede the one recorded 3-11-08, Doc. #2008-0464 in order to correct the street names.

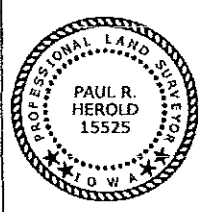
PLAN - VIEW

(Show a minimum of three reference ties to durable physical objects, relevant monuments and physical conditions that will enable recovery of the corner.)



1.) N 1/4 Corner Section 27-95-13
 Fd. 1/2"Ø rebar w/1.5"Ø aluminum cap LS 11442

2.) E 1/4 Corner Section 27-95-13
 Fd. 5/8"Ø rebar



I hereby certify that this land surveying document was prepared and the related surveying work was performed by me or under my direct personal supervision and that I am a duly licensed Land Surveyor under the laws of the State of Iowa.
Paul R. Herold 4-11-08
 Paul R. Herold Date:
 License number 15525
 My license renewal date is December 31, 2008.
 Sheets covered by this seal: Individual sheet only

List Corners to be Indexed			
Corners	Section	Twp.	Range
N 1/4	27	95	13
E 1/4	27	95	13

Project Number: 2008-014
 FB: Chickasaw County 1, Pgs. 61-63

File: S:\Projects\2008-014.dwg, 4/11/2008 8:36:37 AM