

Section 22-95-13  
 AS referred to in  
 Engr. Tie Book

FILED 2003 - 3490  
 RECORDER'S OFFICE  
 CHICKASAW COUNTY, IOWA  
 2003 NOV 14 AM 9 24  
 CINDY MESSERSMITH  
 COUNTY RECORDER

TeKIPPE ENGINEERING, P.C., 128 South Vine Street, West Union, Iowa 52176 Phone (563) 422-6131

UNITED STATES PUBLIC LAND SURVEY CORNER CERTIFICATE

OF  
 Land Survey Monuments situated in Section 23, Township 95 North, Range  
13 West of the Fifth Principal Meridian, CHICKASAW County, Iowa.  
 Previously recorded in none in County Recorder's Office.  
 (book, page, document number, etc.)

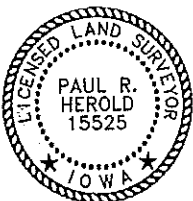
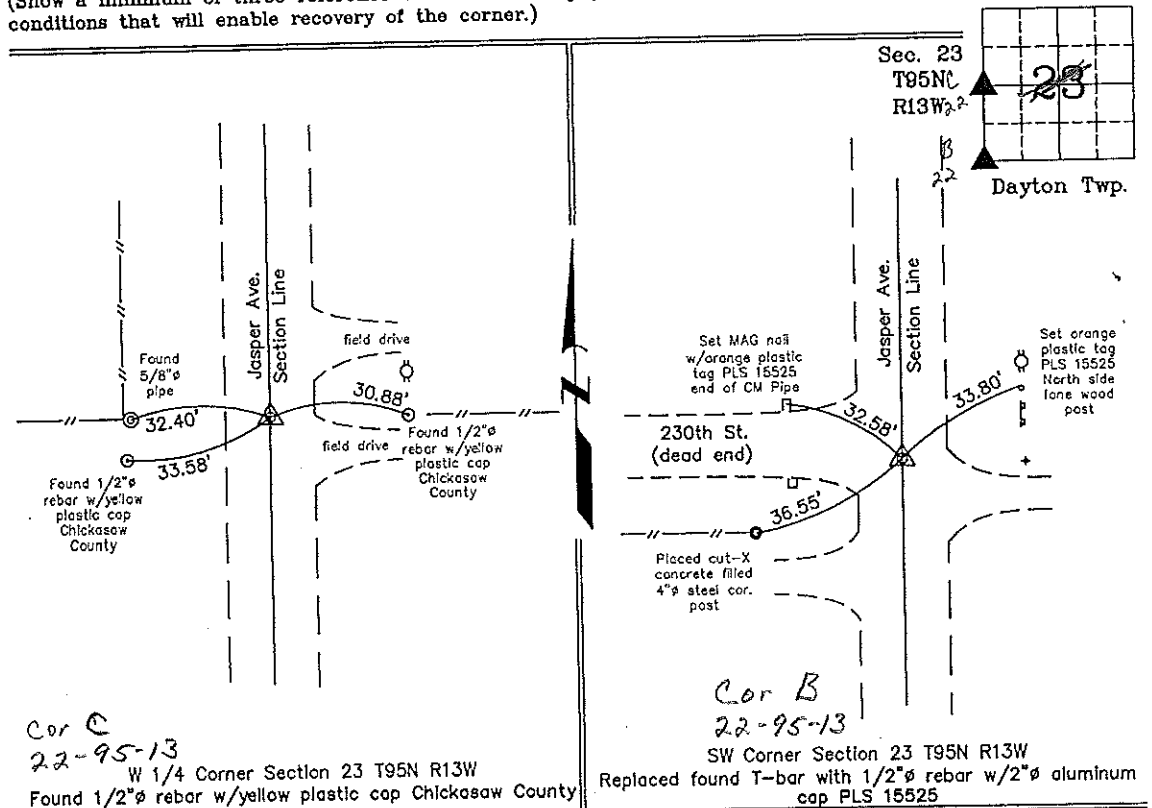
(Show reason for preparing this certificate, the evidence and detailed procedures used in establishing the corner positions and monumentation found or placed.)

Monument Description and Remarks: **W 1/4 Corner Section 23 T95N R13W:** Found 1/2"Ø rebar w/yellow plastic cap Chickasaw County from information obtained from the Chickasaw County Engineer's Office in Field Book Dayton Twp. Corner Ties, Section 22, Corner 'C'. **SW Corner Section 23 T95N R13W:** Found bent T-bar from information obtained from a Survey and Plat Made by Harold D. Blessing, Recorded October 27, 1978, in Book 118, Pages 370-371, Replaced bent T-bar with 1/2"Ø rebar w/2"Ø aluminum cap PLS 15525.

Project Number 03200.15  
 FB. 46K PG. 34-38

PLAN - VIEW

(Show a minimum of three reference ties to durable physical objects, relevant monuments and physical conditions that will enable recovery of the corner.)



I hereby certify that this land surveying document was prepared and the related survey work was performed by me or under my direct personal supervision and that I am a duly licensed Land Surveyor under the laws of the State of Iowa.  
 Paul R. Herold 11-12-03  
 Paul R. Herold Date  
 License number 15525  
 My license renewal date is December 31, 2004.  
 Sheets covered by this seal: Individual

List Corners to be Indexed			
Corners	Section	Twp.	Range
W 1/4	23	95N	13W
SW	23	95N	13W

Filed 12-11-03

X:\Section Corners\Sec. 23\23-95-13ku.dwg