

Chickasaw Co. Recorder
Cindy Messersmith
Fee Book 2007-2148

11/02/2007 @1015AM
SCC SEC COR CERT
Book: Page: # Pages: 1
Total Fees: \$7.00

Herold - Rocks Surveying, 25 1/2 East Main Street, Suite 204, New Hampton, IA 50659, Ph. 641-394-2725

UNITED STATES PUBLIC LAND SURVEY CORNER CERTIFICATE

Land Survey Monuments situated in:

Section 29, Township 95 North, Range 13 West of the Fifth Principal Meridian,
Chickasaw County, Iowa. Previously recorded in None
in County Recorder's Office. (book, page, document number, etc.)

(Show reason for preparing this certificate, the evidence and detailed procedures used in establishing the corner positions and monumentation found or placed.)

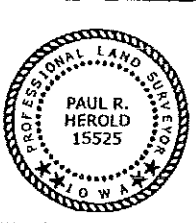
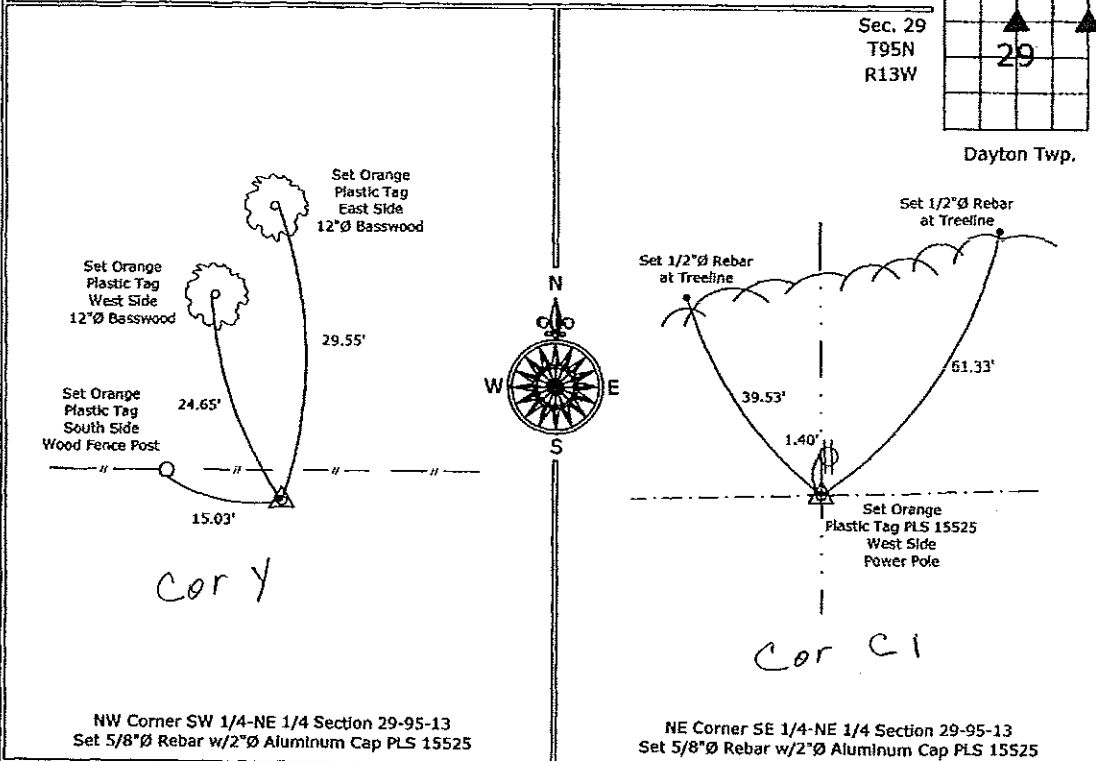
Monument Description and Remarks:

NW Corner SW 1/4-NE 1/4 Section 29-95-13, Set 5/8"Ø Rebar w/2"Ø Aluminum Cap PLS 15525 equidistant and on line between the Center and the N 1/4 Corner of the Section.

NE Corner SE 1/4-NE 1/4 Section 29-95-13, Set 5/8"Ø Rebar w/2"Ø Aluminum Cap PLS 15525 equidistant and on line between the NE Corner and the E 1/4 Corner of the Section.

PLAN - VIEW

(Show a minimum of three reference ties to durable physical objects, relevant monuments and physical conditions that will enable recovery of the corner.)



I hereby certify that this land surveying document was prepared and the related survey work was performed by me or under my direct personal supervision and that I am a duly licensed Land Surveyor under the laws of the State of Iowa.
Paul R. Herold 11-2-07
Paul R. Herold Date:
License number 15525
My license renewal date is December 31, 2008.
Sheets covered by this seal: Individual sheet only

List Corners to be Indexed			
Corners	Section	Twp.	Range
NW-SW-NE	29	95	13
NE-SE-NE	29	95	13

Project Number: 2007-063
FB: Chickasaw County 1, Pgs. 41-44

File: S:_Projects\2007\2007-063.dwg, 10/31/2007 9:08:58 AM