

Chickasaw Co. Recorder
 Cindy Messersmith
Fee Book 2007-2151
 11/02/2007 @1022AM
 SCC: SEC COR CERT
 Book: Page: # Pages: 1
 Total Fees: \$7.00

Herold - Reicks Surveying, 25 1/2 East Main Street, Suite 204, New Hampton, IA 50659, Ph. 641-394-2725

UNITED STATES PUBLIC LAND SURVEY CORNER CERTIFICATE

Land Survey Monuments situated in:

Section 29, Township 95 North, Range 13 West of the Fifth Principal Meridian,
Chickasaw County, Iowa. Previously recorded in None
 in County Recorder's Office. (book, page, document number, etc.)

(Show reason for preparing this certificate, the evidence and detailed procedures used in establishing the corner positions and monumentation found or placed.)

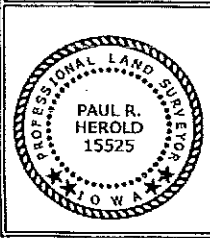
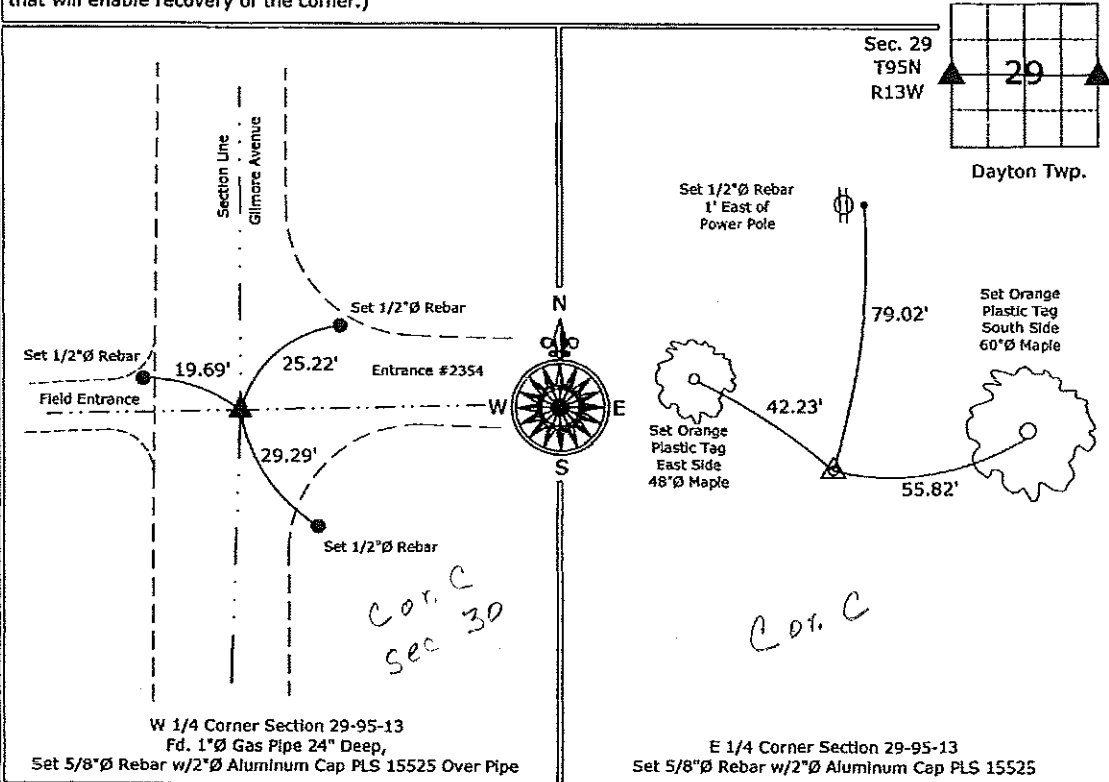
Monument Description and Remarks:

W 1/4 Corner Section 29-95-13, Fd. 1"Ø Gas Pipe 24" Deep, Set 5/8"Ø Rebar w/2"Ø Aluminum Cap PLS 15525 Over Pipe, Corner was located from information obtained from the County Engineer's Field Book, Dayton Twp. Corner Ties, Section 30, Corner "C", none of the 3 ties indicated exist, added 3 new ties to update the Corner.

E 1/4 Corner Section 29-95-13, Set 5/8"Ø Rebar w/2"Ø Aluminum Cap PLS 15525, the "Brick" that was set on a Survey and Plat made by A.F. Kemman, Dated May 19, 1919, in the County Engineer's Book "Surveyors Plats and Field Notes 1" was not found, the area was cleared for a Power Line, the Corner was established by single proportion of the distances on the Plat made by A.F. Kemman.

PLAN - VIEW

(Show a minimum of three reference ties to durable physical objects, relevant monuments and physical conditions that will enable recovery of the corner.)



I hereby certify that this land surveying document was prepared and the related survey work was performed by me or under my direct personal supervision and that I am a duly licensed Land Surveyor under the laws of the State of Iowa.
Paul R. Herold 11-2-07
 Paul R. Herold Date:
 License number 15525
 My license renewal date is December 31, 2008.
 Sheets covered by this seal: Individual sheet only

List Corners to be Indexed			
Corners	Section	Twp.	Range
W 1/4	29	95	13
E 1/4	29	95	13

Project Number: 2007-063
 FB: Chickasaw County 1, Pgs. 41-44

File: S:\Projects\2007\2007-063\dwg\2007-063.dwg, 11/2/2007 8:18:57 AM