

Chickasaw Co. Recorder
 Cindy Messersmith
Fee Book 2007-2147
 11/02/2007 @10:12AM
 SCC SEC COR CERT
 Book: Page: # Pages: 1
 Total Fees: \$7.00

Section 20-95-13
 As referred to in
 Engr. Tax Book

Herold - Recks Surveying, 25 1/2 East Main Street, Suite 204, New Hampton, IA 50659, Ph. 641-394-2725

UNITED STATES PUBLIC LAND SURVEY CORNER CERTIFICATE

Land Survey Monuments situated in:
 Section 29, Township 95 North, Range 13 West of the Fifth Principal Meridian,
Chickasaw County, Iowa. Previously recorded in None
 In County Recorder's Office. (book, page, document number, etc.)

(Show reason for preparing this certificate, the evidence and detailed procedures used in establishing the corner positions and monumentation found or placed.)

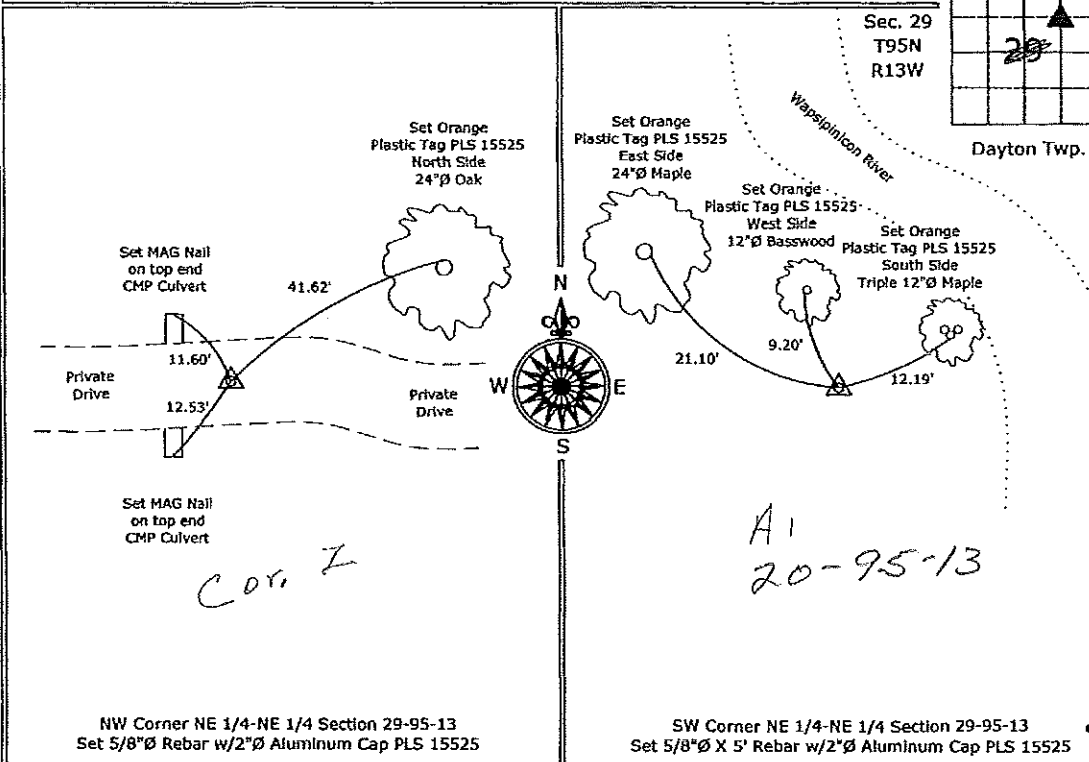
Monument Description and Remarks:

NW Corner NE 1/4-NE 1/4 Section 29-95-13, Set 5/8"Ø Rebar w/2"Ø Aluminum Cap PLS 15525 equidistant and on line between the N 1/4 Corner and the NE Corner of the Section.

SW Corner NE 1/4-NE 1/4 Section 29-95-13, Set 5/8"Ø X 5' Rebar w/2"Ø Aluminum Cap PLS 15525 at the intersection of the 1/4-1/4 Section Lines after the standard mathematical subdivision of the Section.

PLAN - VIEW

(Show a minimum of three reference ties to durable physical objects, relevant monuments and physical conditions that will enable recovery of the corner.)



NW Corner NE 1/4-NE 1/4 Section 29-95-13
 Set 5/8"Ø Rebar w/2"Ø Aluminum Cap PLS 15525

SW Corner NE 1/4-NE 1/4 Section 29-95-13
 Set 5/8"Ø X 5' Rebar w/2"Ø Aluminum Cap PLS 15525



I hereby certify that this land surveying document was prepared and the related survey work was performed by me or under my direct personal supervision and that I am a duly licensed Land Surveyor under the laws of the State of Iowa.
Paul R. Herold 11-2-07
 Paul R. Herold Date:
 License number 15525
 My license renewal date is December 31, 2008.
 Sheets covered by this seal: Individual sheet only

List Corners to be Indexed			
Corners	Section	Twp.	Range
NW-NE-NE	29	95	13
SW-NE-NE	29	95	13

Project Number: 2007-063
 FB: Chickasaw County 1, Pgs. 41-44

File: S:_Projects\2007\2007-063\dwg\10/31/2007 9:07:31 AM