

FILED 2003 - 0422  
 RECORDER'S OFFICE  
 CHICKASAW COUNTY, IOWA  
*fee \$6.00*  
 2003 FEB 10 AM 9 45

CINDY MESSERSMITH  
 COUNTY RECORDER

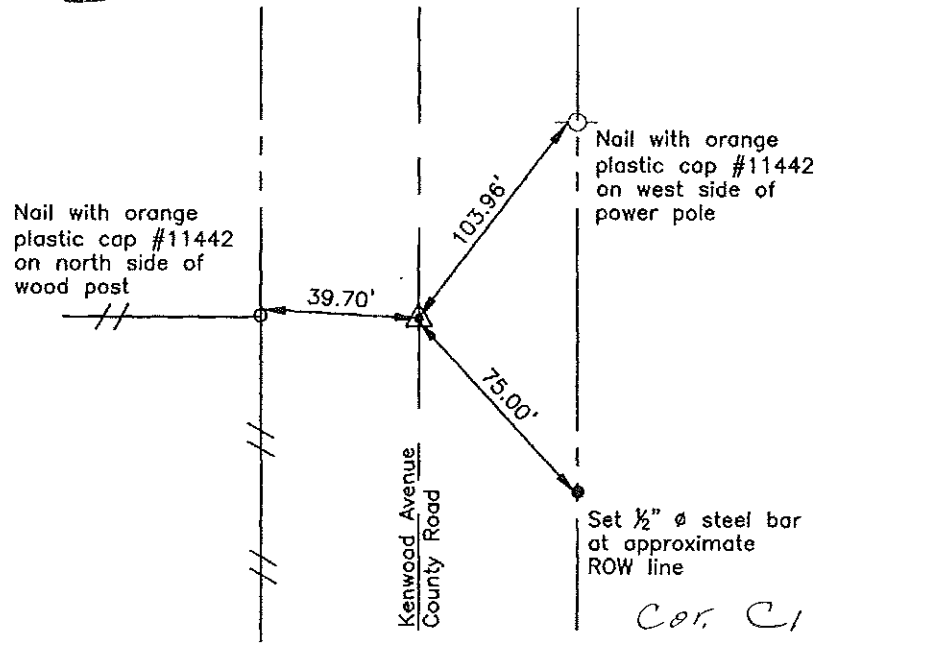
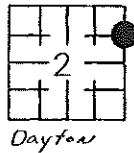
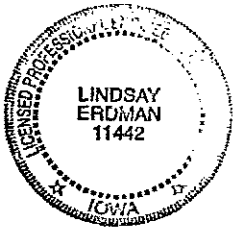
Prepared by: Erdman Engineering, P.C. 708 Commerce Drive, P.O. Box 246 Decorah, Iowa 52101, (563)382-4194

United States Public Land Survey Corner Certificate  
 of

Land Survey Monuments situated in Section 2, Township 95, Range 13 West of  
 the 5th Principal Meridian in Chickasaw County, Iowa. Previously recorded in  
does not apply in the county Recorder's Office.

Monument Description and Remarks: This certificate is prepared in accordance with  
 Section 193C of the Code of Iowa. No previous certificate has been filed for this  
 corner location. We found no record of the ENE  $\frac{1}{8}$  Corner being set. We found no  
 evidence of a monument in the field other than the centerline of the county road and  
 an existing fence line running west. We found the NE Corner and the E  $\frac{1}{4}$  Corner. Based  
 on this we set a Mag-nail with 1  $\frac{1}{2}$ " stainless steel washer #11442 on line between the  
 NE Corner and the E  $\frac{1}{4}$  corner and in line with the fence line running west as the  
 ENE  $\frac{1}{8}$  Corner of Section 2, Township 95 North, Range 13 West.

Plan-View



I hereby certify that the survey work was completed  
 and this certificate was prepared by me or under my  
 direct supervision and that I am a duly registered  
 land surveyor under the laws of the State of Iowa.

Signature: *Lindsay Erdman*  
 Lindsay Erdman, P.E. and L.S.  
 Date: 2/4/03 Reg. No. 11442

My license renewal date is December 31, 2004

Corner(s) to be Indexed

Corner	Section	Township	Range
ENE 1/8	2	95	13

*Filed 2-20-03*