

UNITED STATES PUBLIC LAND SURVEY CORNER CERTIFICATE

OF

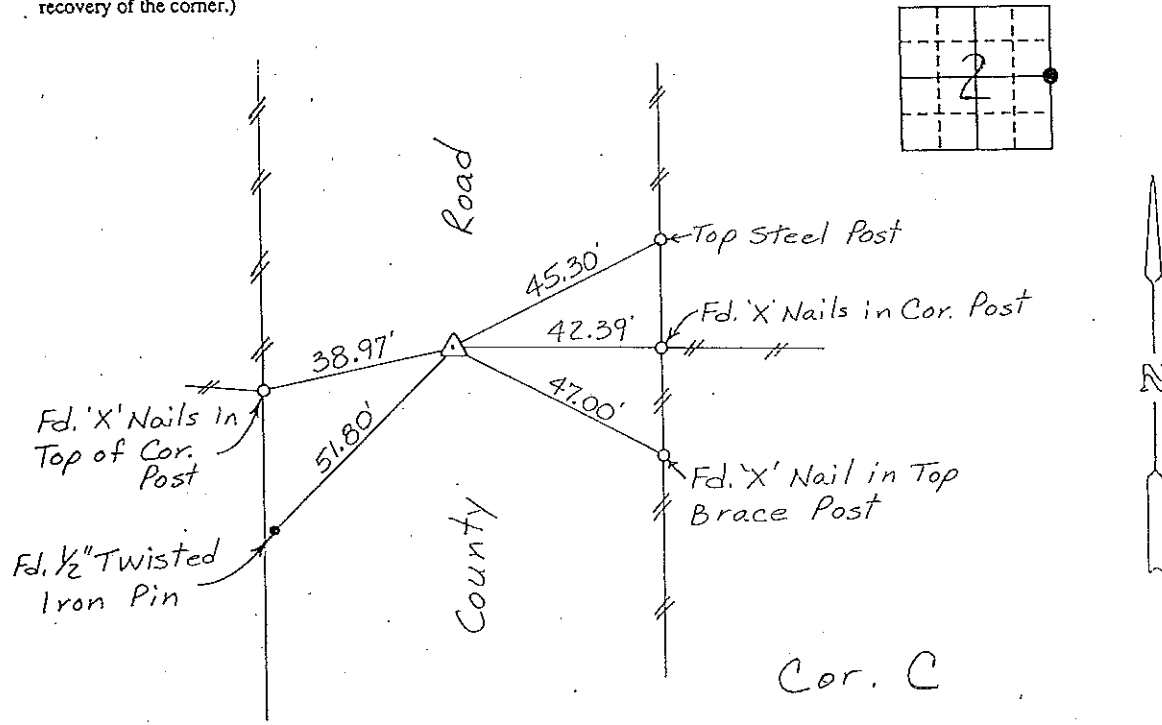
Land Survey Monuments situated in Section 2, Township 95 NORTH, Range 13 WEST, of the Fifth Principal Meridian, CHICKASAW County, Iowa. Previously recorded in (NONE) in County Recorder's Office.

(Show reason for preparing this certificate, the evidence and detailed procedures used in establishing the corner positions and monumentation found or placed.)

Monument Description and Remarks: E 1/4 CORNER, SECTION 2-T95N-R13W:
FOUND PK NAIL IN ASPHALT

PLAN - VIEW

(Show a minimum of three reference ties to durable physical objects, relevant monuments and physical conditions that will enable recovery of the corner.)



E 1/4 CORNER, SECTION 2-T95N-R13W

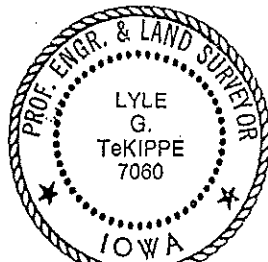
I hereby certify that the survey work was completed and this certificate was prepared by me or under my direct personal supervision and that I am a duly registered land surveyor under the laws of the state of Iowa.

Signature: Lyle G. TeKippe
Name typed or printed: Lyle G. TeKippe

Date: 10-14-92 Reg. No. 7060

Corners	List Corners to be Indexed		
	Section	Twp	Range
<u>E 1/4</u>	<u>2</u>	<u>95N</u>	<u>13W</u>

SEAL



Placed in tie book 10/30/92