

UNITED STATES PUBLIC LAND SURVEY CORNER CERTIFICATE

OF
 Land Survey Monuments situated in Section 2, Township 95 NORTH, Range 13 WEST, of the Fifth Principal Meridian, CHICKASAW County, Iowa.
 Previously recorded in (NONE) in County Recorder's Office.
(book, page, document number, etc.)

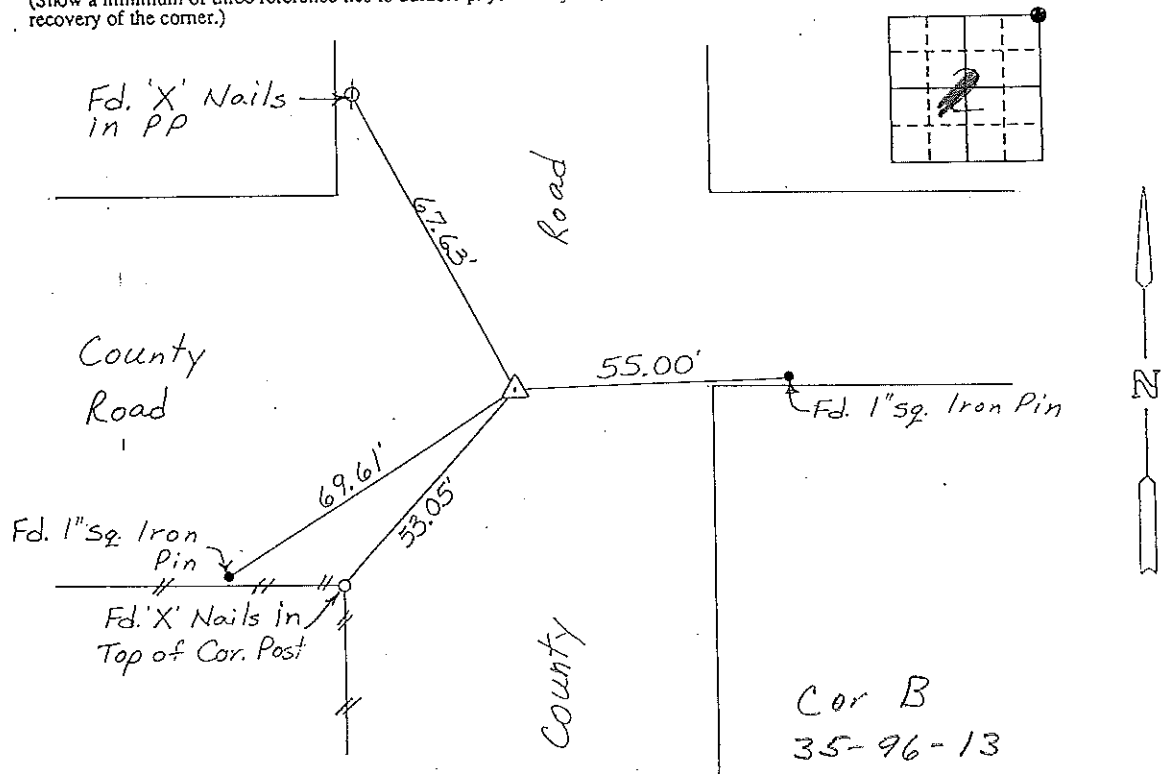
(Show reason for preparing this certificate, the evidence and detailed procedures used in establishing the corner positions and monumentation found or placed.)

Monument Description and Remarks: NE CORNER, SECTION 2-T95N-R13W:
FOUND PK NAIL IN ASPHALT.

PLAN - VIEW

(Show a minimum of three reference ties to durable physical objects, relevant monuments and physical conditions that will enable recovery of the corner.)

*Section 35-96-13
 As referred to in
 Engr. Tie Book*



NE CORNER, SECTION 2-T95N-R13W

I hereby certify that the survey work was completed and this certificate was prepared by me or under my direct personal supervision and that I am a duly registered land surveyor under the laws of the state of Iowa.

Signature: Lyle G. TeKippe
 Name typed or printed: Lyle G. TeKippe
 Date: 10-14-92 Reg. No. 7060

Corners	Section	Twp	Range
NE	2	95N	13W

*Placed
 in tie book
 10/30/92*

SEAL

