

FILED 2003-0421
 RECORDER'S OFFICE
 CHICKASAW COUNTY, IOWA
fee \$600
 2003 FEB 10 AM 9 45
 CINDY MESSERSMITH
 COUNTY RECORDER

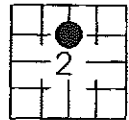
Prepared by: Erdman Engineering, P.C. 708 Commerce Drive, P.O. Box 246 Decorah, Iowa 52101, (563)382-4194

United States Public Land Survey Corner Certificate
 of

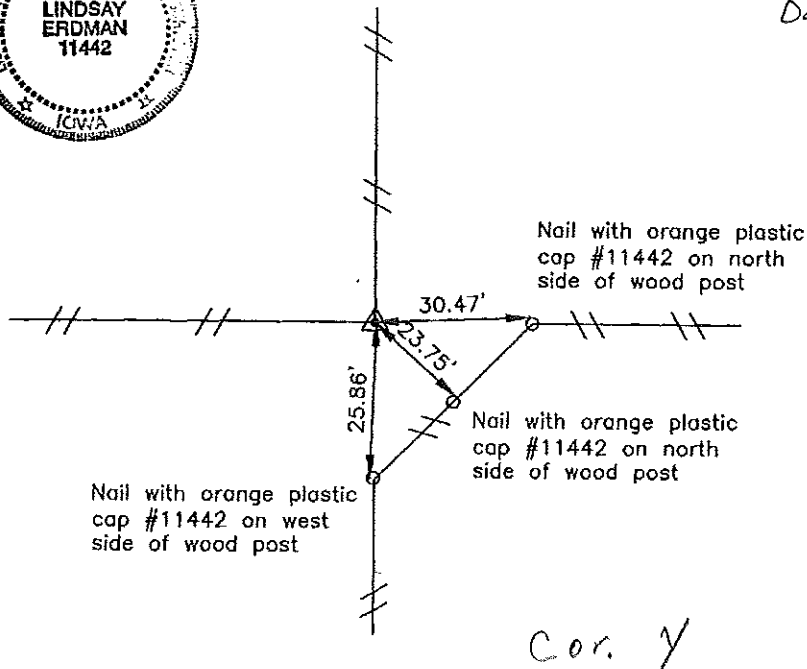
Land Survey Monuments situated in Section 2, Township 95, Range 13 West of
 the 5th Principal Meridian in Chickasaw County, Iowa. Previously recorded in
does not apply in the county Recorder's Office.

Monument Description and Remarks: This certificate is prepared in accordance with
 Section 193C of the Code of Iowa. No previous certificate has been filed for this
 corner location. We found no record of the N 1/8 Corner being set. We found no evidence
 of a monument in the field other than an existing fence corner with fence lines running
 north, south, east, and west. We found the N 1/4 Corner and the S 1/4 Corner. Based on
 this we set a 3/4" diameter steel bar on line between the N 1/4 Corner and the S 1/4
 Corner and at the existing fence corners the N 1/8 Corner of Section 2, Township 95
 North, range 13 West. The monuments is on the SW side of the corner post.

Plan-View



Dayton



I hereby certify that the survey work was completed
 and this certificate was prepared by me or under my
 direct supervision and that I am a duly registered
 land surveyor under the laws of the State of Iowa.

Signature Lindsay Erdman
 Lindsay Erdman, P.E. and L.S.
 Date: 2/10/03 Reg. No. 11442

My license renewal date is December 31, 2004

Corner(s) to be Indexed

Corner	Section	Township	Range
N 1/8	2	95	13

Filed 2-20-03