

Chickasaw Co. Recorder
 Cindy Messersmith
Fee Book 2016-1627
 11/30/2016 @12:44PM
 SEC: SEC COR CERT
 Book: Page: # Pages: 1
 Total Fees: \$7.00

Prepared by & Return to: Herold - Reicks Surveying, 10 East Main Street, New Hampton, IA 50659, Ph. 641-394-2725

United States Public Land Survey Corner Certificate

Land Survey Monument situated in
 Section 19, Township 95 North, Range 13 West of the Fifth Principal Meridian, Chickasaw County, Iowa.
 On file in Bk. 147, Pg. 464 in the County Recorder's office.

This certificate is being prepared in compliance with Iowa Code Chapter 355.11 because:

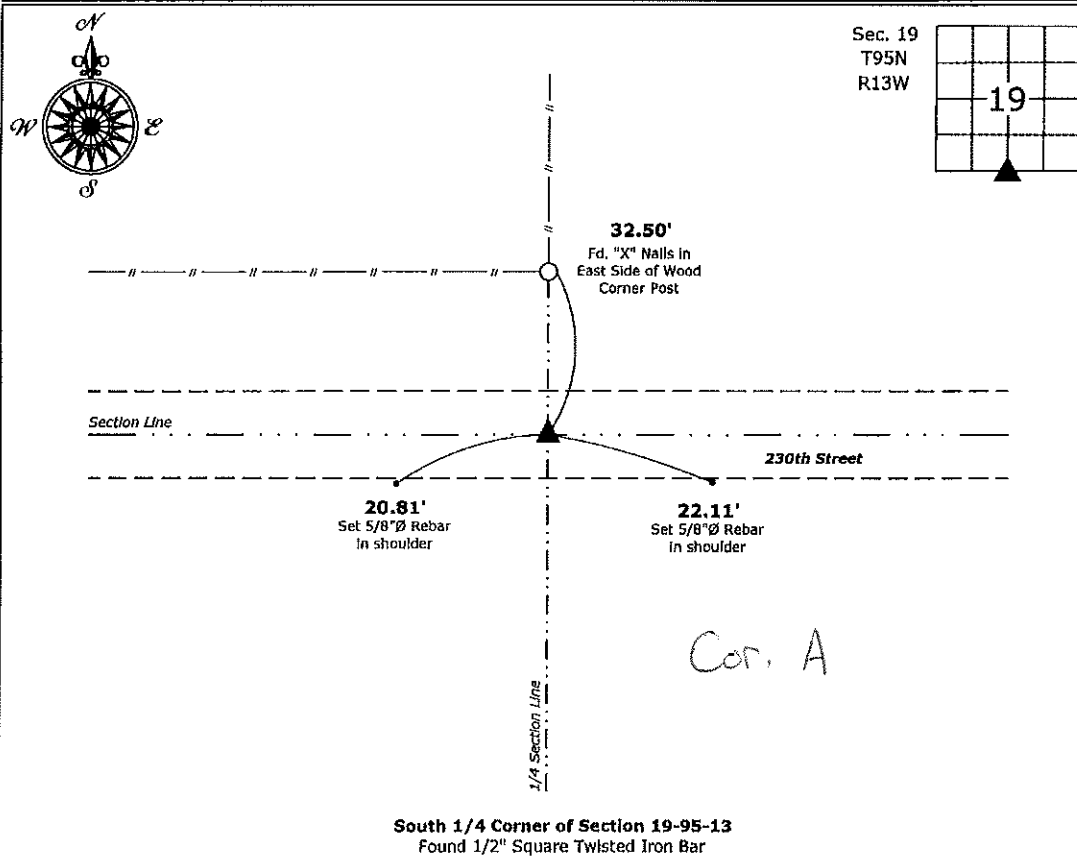
- There is no certificate on file for this corner.
- There are no longer three valid ties of record.
- There are changes to reference ties of record.
- There is change of monumentation of record.
- To clarify description of record monument (ties).

Monument Description and Remarks:

South 1/4 Corner: Found 1/2" Square Twisted Iron Bar with information obtained from the previously recorded Section Corner Certificate. Set 2 new ties to update the Corner.

Plan View

(Show a minimum of three reference ties to durable physical objects, relevant monuments and physical conditions that will enable recovery of the corner.)



South 1/4 Corner of Section 19-95-13
 Found 1/2" Square Twisted Iron Bar



I hereby certify that this land surveying document was prepared and the related survey work was performed by me or under my direct personal supervision and that I am a duly licensed Land Surveyor under the laws of the State of Iowa.
Kirk D. Reicks 11-30-16
 Kirk D. Reicks Date:
 License number 19211
 My license renewal date is December 31, 2016.
 Sheets covered by this seal: Individual sheet only

List Corner to be Indexed			
Corner	Section	Twp.	Range
S 1/4	19	95	13
Project Number: 2016-117			
FB: Chickasaw 8, Pgs. 13-14			

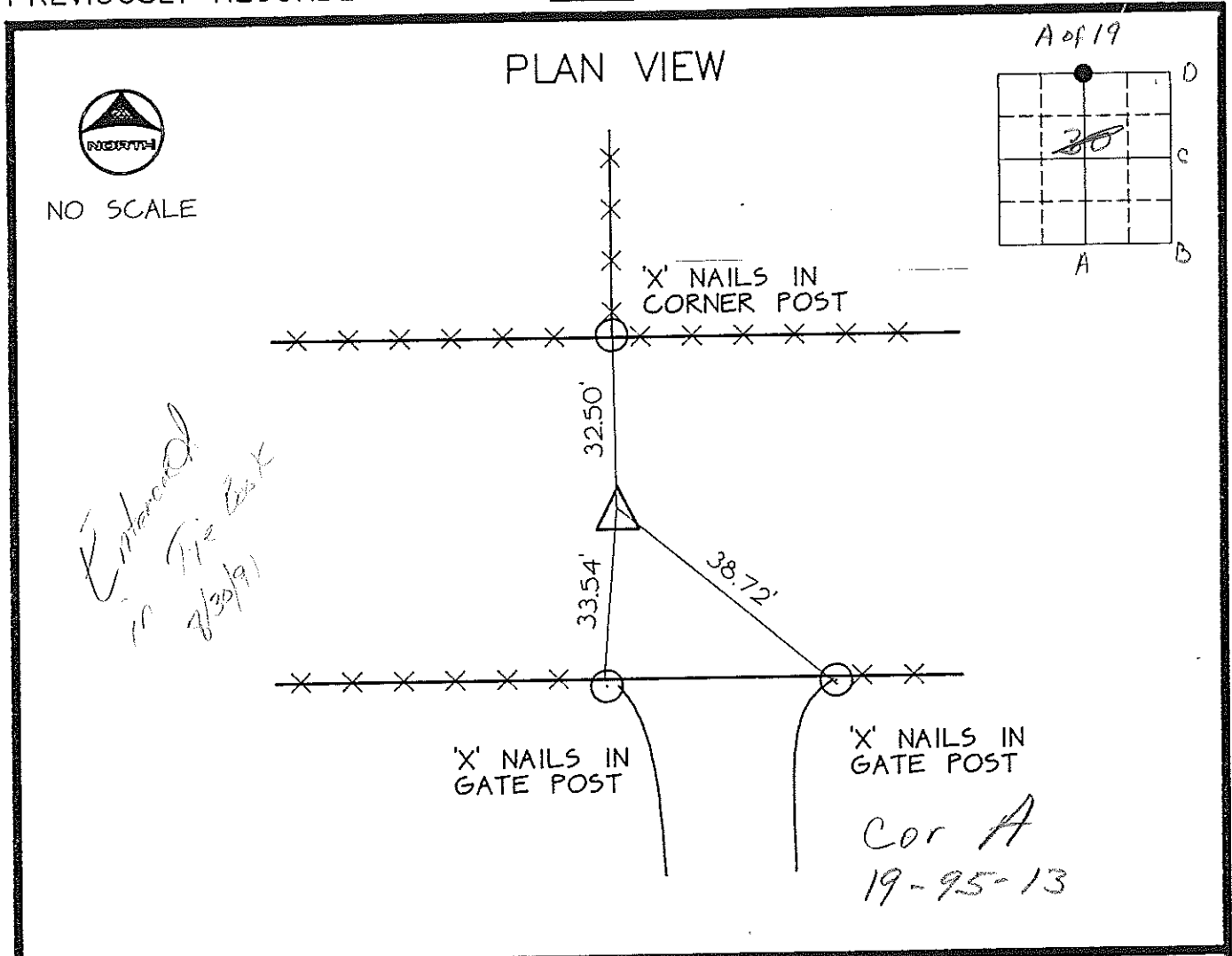
File: S:_CSD Projects\County Control Systems\CHICKASAW\CHICK-34\CHICK-34.dwg, 11/30/2016 10:53:44 AM

UNITED STATES PUBLIC LAND SURVEY CORNER CERTIFICATE

19
 SECTION 30 , TOWNSHIP 95 , RANGE 13 OF THE 5TH. P.M.
 IN CHICKASAW COUNTY, IOWA
 CORNER: N 1/4 CORNER
 DESCRIPTION AND REMARKS: FOUND PIN

*Section 19-95-13
 As referred to in
 Engr. Tie Book*

PREVIOUSLY RECORDED IN BOOK _____, PAGE _____



CERTIFICATION:
 I HEREBY CERTIFY THAT THIS MAP, PLAN, OR SURVEY WAS MADE BY
 ME OR UNDER MY DIRECT PERSONAL SUPERVISION AND THAT I AM A
 DULY REGISTERED LAND SURVEYOR UNDER THE LAWS OF THE STATE
 OF IOWA.

Thomas V. Craft
 THOMAS V. CRAFT REG. L.S. NO. 7549

DATE: 07/01/91



INDEXING ALTERNATIVES

CORNER	SECTION	TWP	RANGE
S 1/4	19	95	13

MCN/214140

147-464

Howard B. Green Company, Charles City, Iowa