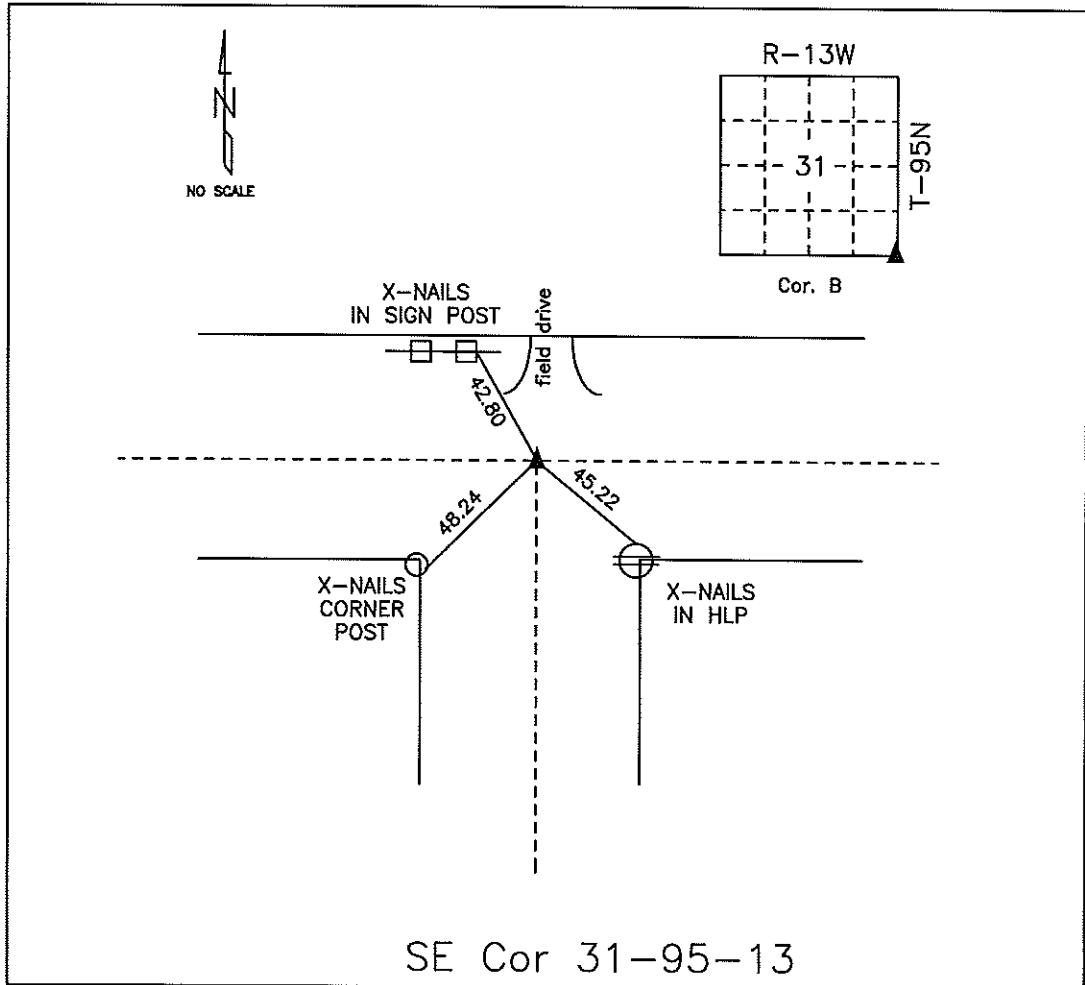


COUNTY ENGINEER'S SECTION CORNER PRESERVATION RECORD

LAND SURVEY MONUMENT LOCATED IN SECTION 31, TOWNSHIP 95 N
NORTH, RANGE 13 W, OF THE 5TH P.M. Chickasaw COUNTY, IOWA
PREVIOUSLY RECORDED COUNTY ENGINEER'S OFFICE.



MONUMENT DESCRIPTION AND NARRATIVE Fnd iron pin w/cap 07/23/2009

Previously recorded in Book 2002-0571.

All ties are slope chained

I AM NOT A REGISTERED LAND SURVEYOR UNDER THE LAWS OF THE STATE OF IOWA

JIM FOSTER CHICKASAW CO. DATE: 07/23/2009

Section 31-95-13
As referred to in
Engl. Trc Book

FILED 2002-0571
RECORDER'S OFFICE
CHICKASAW COUNTY, IOWA
fee \$600
2002 MAR 1 AM 10 32

GINDY MESSERSMITH
COUNTY RECORDER

PREPARED BY ROBERT L. HOLZE MID-WEST LAND SURVEYORS, INC., P.O. BOX 1352, MASON CITY, IOWA 50402-1352, (641)-423-1451

UNITED STATES PUBLIC LAND SURVEY CORNER CERTIFICATE

OF

Land Survey Monuments situated in Section 5, Township 94 N, Range 13 W, of the Fifth Principal Meridian, CHICKASAW County, Iowa

Previously recorded in _____ In County Recorder's Office.

(book, page, document, number, etc.)

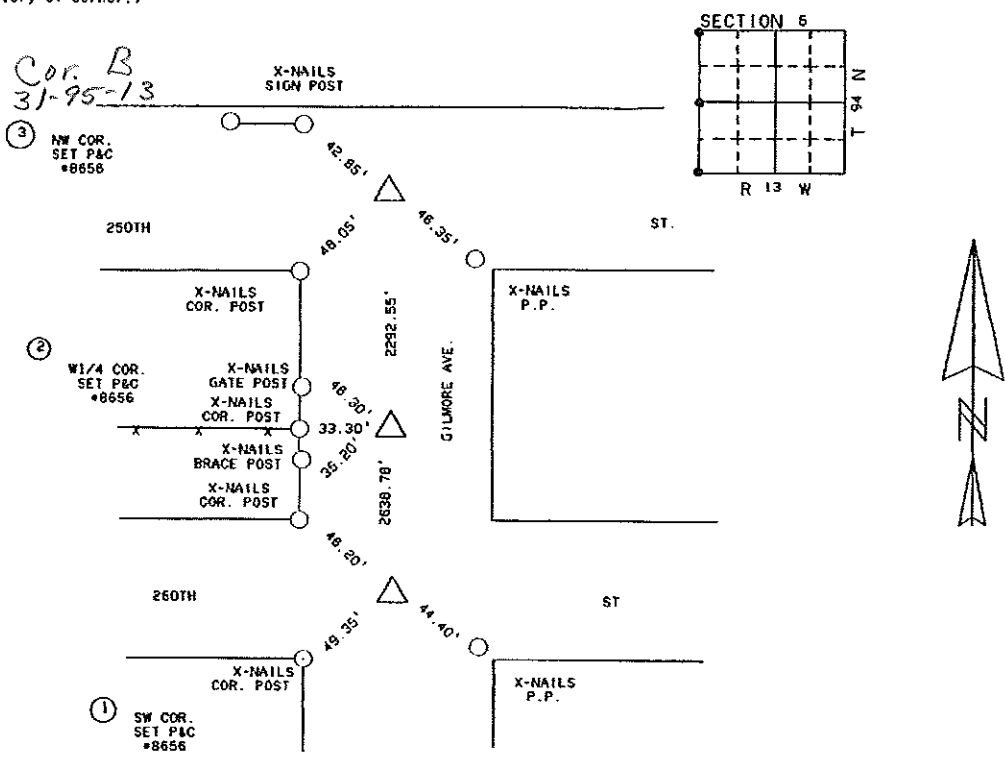
(Show reason for preparing this certificate, the evidence and detailed procedures used in establishing the corner positions and monumentation found or placed.)

Monument Description and Remarks:

- ① SW CORNER SET P&C #8656 BY SPLITTING RIGHT OF WAYS
- ② W1/4 CORNER SET P&C #8656 ON LINE ON FENCE LINE WEST
- ③ NW CORNER SET P&C #8656 BY SPLITTING RIGHT OF WAY

PLAN-VIEW

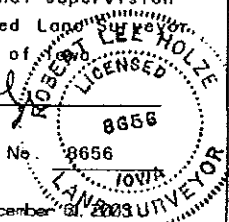
(Show a minimum of three reference ties to durable physical objects, relevant monuments and physical conditions that will enable recovery of corner.)



I hereby certify that the survey work was completed and this certificate was prepared by me or under my direct personal supervision and that I am a duly Licensed Land Surveyor under the laws of the State of Iowa.

Signature: Robert L. Holze
Robert L. Holze
Date: 2/25/2002 Reg. No. 8656

My registration renewal date is December 31, 2003



List of Corners to be Indexed			
Corners	Section	Twp.	Range
① SW COR	5	94	13
② W1/4	5	94	13
③ NW COR.	5	94	13