

Section 20-95-13
As referred to in
Eng. Tie Book

Chickasaw Co. Recorder
Cindy Messersmith
Fee Book 2007-2146
11/02/2007 @1010AM
SCC SEC COR CERT # Pages: 1
Book: Page: \$7.00
Total Fees:

Herald - Rescks Surveying, 25 1/2 East Main Street, Suite 204, New Hampton, IA 50659, Ph. 641-394-2725

UNITED STATES PUBLIC LAND SURVEY CORNER CERTIFICATE

Land Survey Monuments situated in:
Section 29, Township 95 North, Range 13 West of the Fifth Principal Meridian,
Chickasaw County, Iowa. Previously recorded in None
In County Recorder's Office. (book, page, document number, etc.)

(Show reason for preparing this certificate, the evidence and detailed procedures used in establishing the corner positions and monumentation found or placed.)

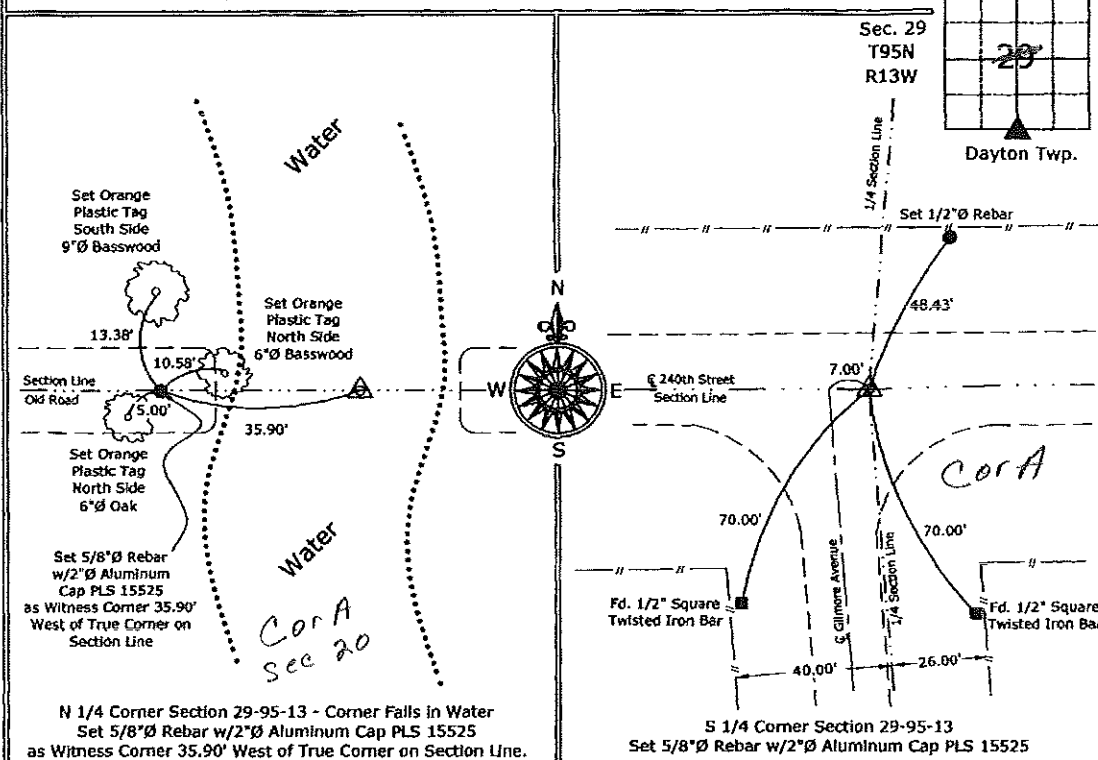
Monument Description and Remarks:

N 1/4 Corner Section 29-95-13 - Corner Falls in Water, Set 1/2"Ø rebar w/2"Ø aluminum cap PLS 15525 as Witness Corner 35.90' West of True Corner on Section Line, the Corner position was established by extending a line from the S 1/4 Corner North through a position established at the center of the Section from a Survey and Plat made by A.F. Kemman, Dated May 19, 1919, in the County Engineer's Book "Surveyors Plats and Field Notes 1" and intersecting a Line from the NW Corner of the Section East through a position in the Center of the Grade of the abandoned road that was established on the Section Line.

S 1/4 Corner Section 29-95-13, Set 5/8"Ø Rebar w/2"Ø Aluminum Cap PLS 15525 from the 2 remaining Ties obtained from the County Engineer's Office, in Field Book "Dayton Twp. Corner Ties, Section 29, Corner "A"

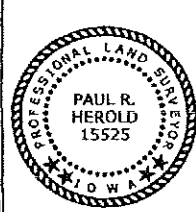
PLAN - VIEW

(Show a minimum of three reference ties to durable physical objects, relevant monuments and physical conditions that will enable recovery of the corner.)



N 1/4 Corner Section 29-95-13 - Corner Falls in Water
Set 5/8"Ø Rebar w/2"Ø Aluminum Cap PLS 15525
as Witness Corner 35.90' West of True Corner on Section Line.

S 1/4 Corner Section 29-95-13
Set 5/8"Ø Rebar w/2"Ø Aluminum Cap PLS 15525



I hereby certify that this land surveying document was prepared and the related survey work was performed by me or under my direct personal supervision and that I am a duly licensed Land Surveyor under the laws of the State of Iowa.
Paul R. Herold 11-2-07
Paul R. Herold Date:
License number 15525
My license renewal date is December 31, 2008.
Sheets covered by this seal: Individual sheet only

List Corners to be Indexed			
Corners	Section	Twp.	Range
N 1/4	29	95	13
S 1/4	29	95	13

Project Number: 2007-063
FB: Chickasaw County 1, Pgs. 41-44

File: S:_Projects\2007\2007-063\dwg\2007-063.dwg, 11/1/2007 8:05:10 AM