

Chickasaw Co. Recorder
 Cindy Messersmith
Fee Book 2007-2149
 11/02/2007 8:10:19AM
 SCC: SEC COR CERT
 Book: Page: # Pages: 1
 Total Fees: \$7.00

Herold - Reicks Surveying, 25 1/2 East Main Street, Suite 204, New Hampton, IA 50659, Ph. 641-394-2725

UNITED STATES PUBLIC LAND SURVEY CORNER CERTIFICATE

Land Survey Monuments situated in:
 Section 29, Township 95 North, Range 13 West of the Fifth Principal Meridian,
Chickasaw County, Iowa. Previously recorded in None
 in County Recorder's Office. (book, page, document number, etc.)

(Show reason for preparing this certificate, the evidence and detailed procedures used in establishing the corner positions and monumentation found or placed.)

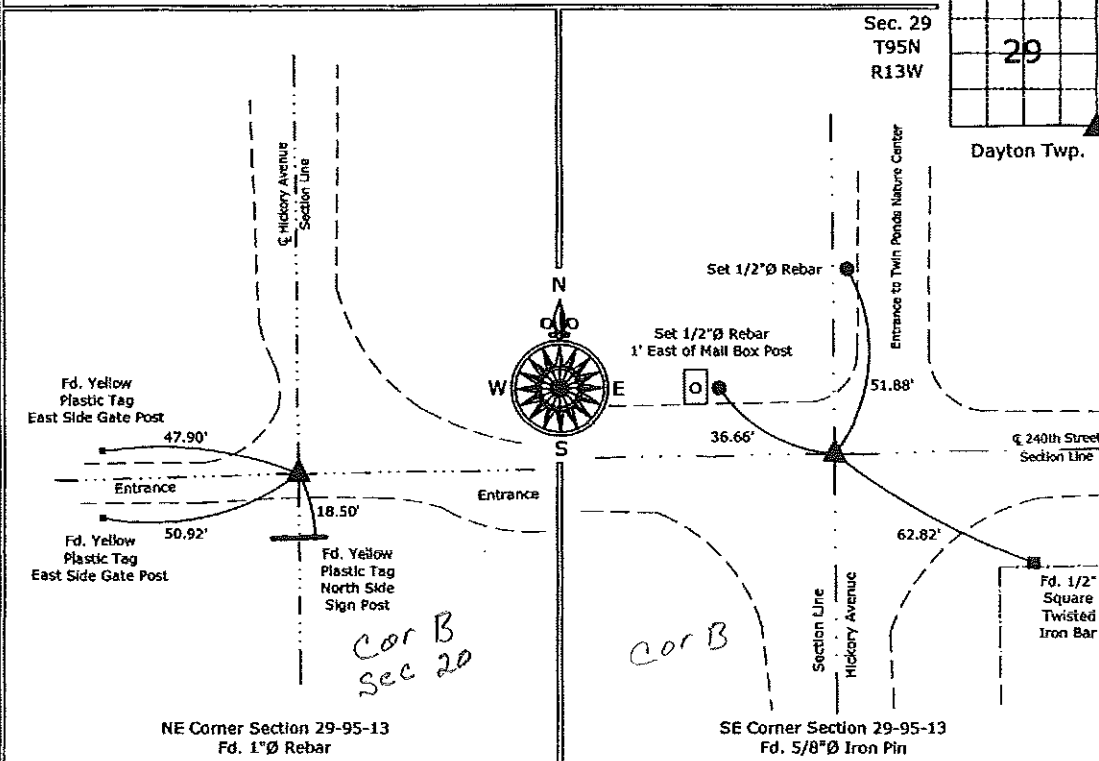
Monument Description and Remarks:

NE Corner Section 29-95-13, Fd. 1"Ø Rebar from Information on a Survey and Plat made by L.P. Erdman, Recorded in Book 124, Page 62, 3 newer ties are present, however no indication of the origin of the ties.

SE Corner Section 29-95-13, Fd. 5/8"Ø Iron Pin from information obtained from the County Engineer's Office in Field Book Dayton Twp. Corner Ties, Section 29, Corner "B", only 1 of the original ties remain, added 2 new ties to update the Corner.

PLAN - VIEW

(Show a minimum of three reference ties to durable physical objects, relevant monuments and physical conditions that will enable recovery of the corner.)



I hereby certify that this land surveying document was prepared and the related survey work was performed by me or under my direct personal supervision and that I am a duly licensed Land Surveyor under the laws of the State of Iowa.
Paul R. Herold 11-2-07
 Paul R. Herold Date:
 License number 15525
 My license renewal date is December 31, 2008.
 Sheets covered by this seal: Individual sheet only

List Corners to be Indexed			
Corners	Section	Twp.	Range
NE	29	95	13
SE	29	95	13

Project Number: 2007-063
 FB: Chickasaw County 1, Pgs. 41-44

File: S:\Projects\2007\2007-063\dwg\2007-063.dwg, 10/31/2007 9:11:27 AM