

Section 32-95-13
As referred to in
Eng. Tie Book

Chickasaw Co. Recorder
Cindy Messersmith
Fee Book 2008-0045

01/08/2008 @0833AM
SCC SEC COR CERT
Book: Page: # Pages: 1
Total Fees: \$7.00

TEKIPPE ENGINEERING, P.C., 128 South Vine Street, West Union, Iowa 52175 Phone (319) 422-5131

UNITED STATES PUBLIC LAND SURVEY CORNER CERTIFICATE

OF

Land Survey Monuments situated in Section 33, Township 95 North, Range 13 West of the Fifth Principal Meridian, Chickasaw County, Iowa.

Previously recorded in (1) none (2) none in County Recorder's Office.
(book, page, document number, etc.)

(Show reason for preparing this certificate, the evidence and detailed procedures used in establishing the corner positions and monumentation found or placed.)

Monument Description and Remarks: (1) W1/4 Corner of Section 33-T95N-R13W:

Found 5/8" rebar.

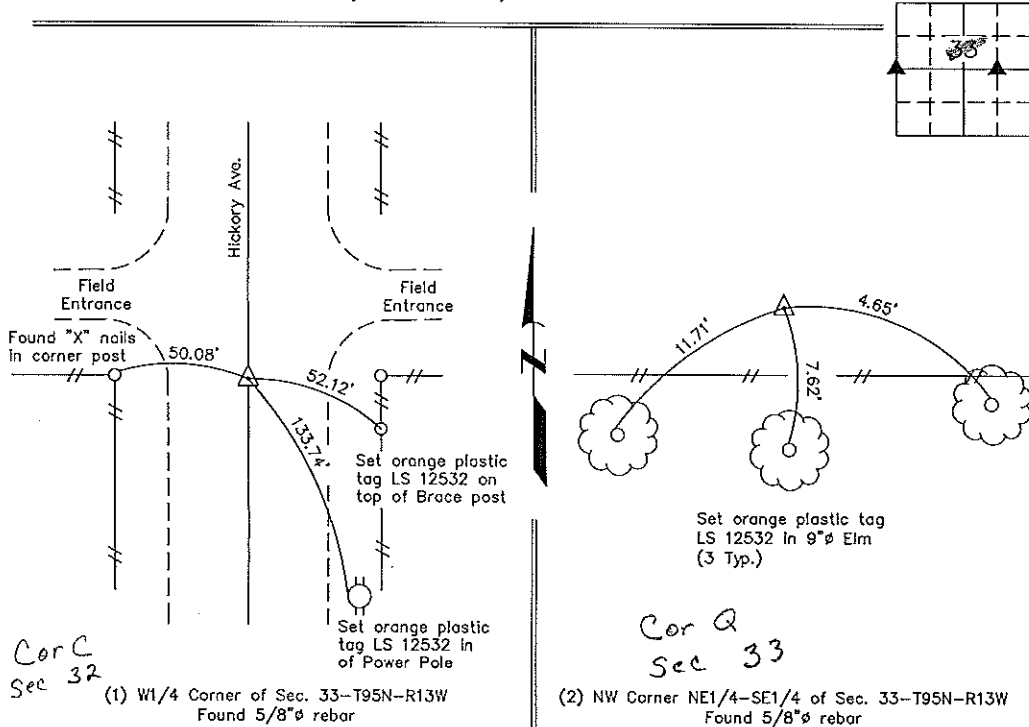
(2) NW Corner NE1/4-SE1/4 of Section 33-T95N-R13W:

Found 5/8" rebar.

PLAN - VIEW

Project Number 07226.LS
Field Book: 46M, Page 53-55

(Show a minimum of three reference ties to durable physical objects, relevant monuments and physical conditions that will enable recovery of the corner.)



I hereby certify that this land surveying document was prepared and the related survey work was performed by me or under my direct personal supervision and that I am a duly licensed Land Surveyor under the laws of the State of Iowa.

Gary L. Casady 1-4-08
Gary L. Casady Date

License Number 12532
My license renewal date is December 31, 2008.
Sheets covered by this seal: Individual



List Corners to be Indexed

Corners	Section	Twp.	Range
W1/4	33	95N	13W
NW of NE-SE	33	95N	13W

X:\Section Corners\Sec. 33\33-95-13kn.dwg