

Section 33-95-13  
As referred to in  
Eng. Tie Book

County Engineer's  
Copy

TeKIPPE ENGINEERING, P.C., 128 South Vine Street, West Union, Iowa 52175 Phone (319) 422-5131

UNITED STATES PUBLIC LAND SURVEY CORNER CERTIFICATE

OF <sup>33</sup>/<sub>34</sub>, Township 95 North, Range 13 West, of the Fifth Principal Meridian, CHICKASAW County, Iowa.  
Previously recorded in none in County Recorder's Office.  
(book, page, document number, etc.)

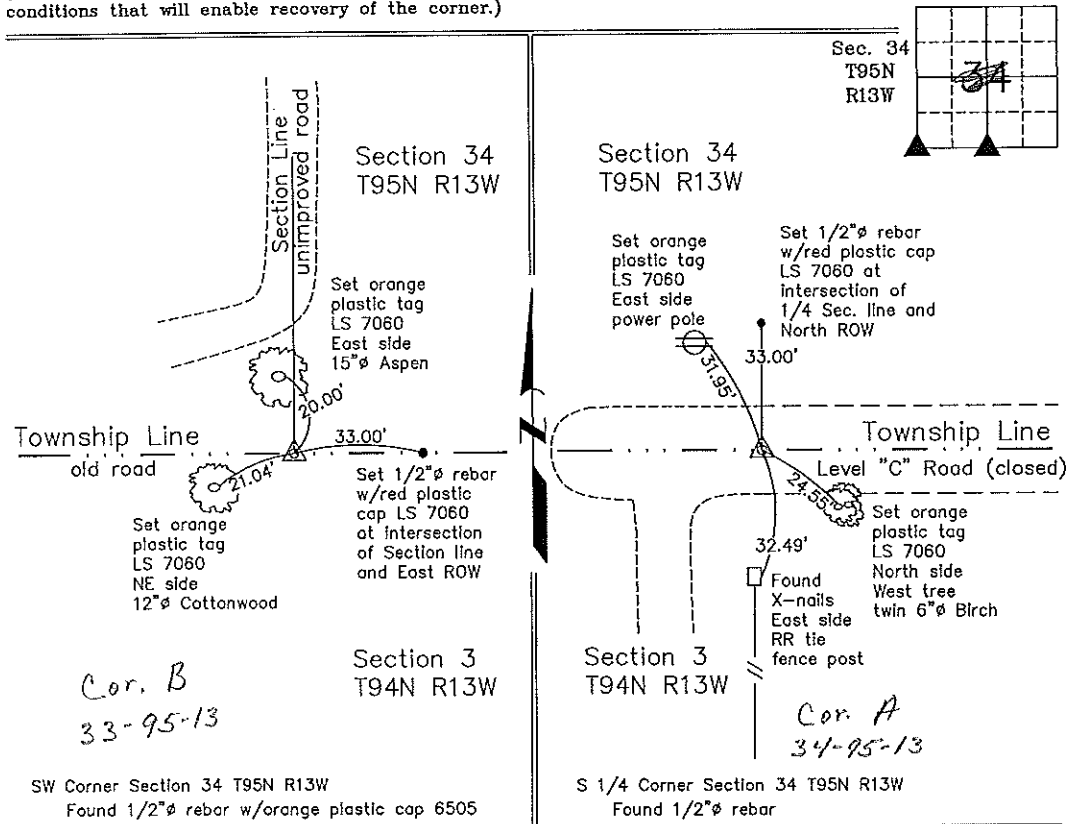
(Show reason for preparing this certificate, the evidence and detailed procedures used in establishing the corner positions and monumentation found or placed.)

Monument Description and Remarks: SW Corner Section 34 T95N R13W: Found 1/2"Ø rebar w/orange plastic cap 6505.  
S 1/4 Corner Section 34 T95N R13W: Found 1/2"Ø rebar.

NOTE: Both rebars were shown as set on a Survey and Plat made by Paul H. Helland, recorded in the Chickasaw County Recorder's Office on August 20, 1980, in Deed Book 122, Page 281.

PLAN - VIEW

(Show a minimum of three reference ties to durable physical objects, relevant monuments and physical conditions that will enable recovery of the corner.)



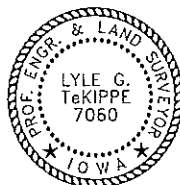
Cor. B  
33-95-13

Cor. A  
34-95-13

SW Corner Section 34 T95N R13W  
Found 1/2"Ø rebar w/orange plastic cap 6505

S 1/4 Corner Section 34 T95N R13W  
Found 1/2"Ø rebar

I hereby certify that this land surveying document was prepared by me or under my direct personal supervision and that I am a duly licensed Land Surveyor under the laws of the State of Iowa.



*Lyle G. TeKippe* 1-19-99  
Lyle G. TeKippe Date  
License number 7060  
My license renewal date is December 31, 2000.  
Sheets covered by this seal: Individual

List Corners to be Indexed

Corners	Section	Twp.	Range
SW	34	95N	13W
Corner B section 33 Dayton			
S 1/4	34	95N	13W
Corner A section 34 Dayton			

SW 34 95N 13W

Corner B section 33 Dayton

S 1/4 34 95N 13W

Corner A section 34 Dayton

Section 34-95-13  
As referred to in  
Engr. Tie Book

County Engineer's Copy

TeKIPPE ENGINEERING, P.C., 128 South Vine Street, West Union, Iowa 52175 Phone (319) 422-5131

UNITED STATES PUBLIC LAND SURVEY CORNER CERTIFICATE

OF 217 95  
Land Survey Monuments situated in Section 3, Township 94 North, Range 13 West, of the Fifth Principal Meridian, CHICKASAW County, Iowa.  
Previously recorded in none in County Recorder's Office.  
(book, page, document number, etc.)

(Show reason for preparing this certificate, the evidence and detailed procedures used in establishing the corner positions and monumentation found or placed.)

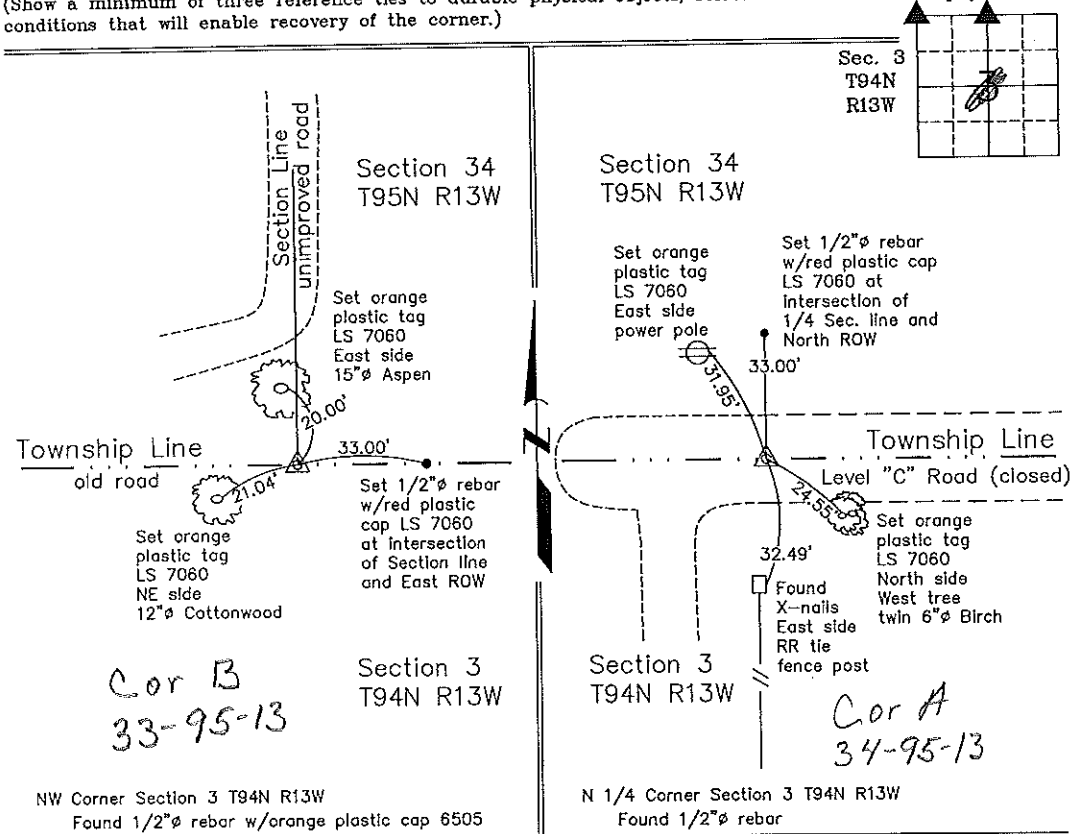
Monument Description and Remarks: NW Corner Section 3 T94N R13W: Found 1/2"Ø rebar w/orange plastic cap 6505.

N 1/4 Corner Section 3 T94N R13W: Found 1/2"Ø rebar.

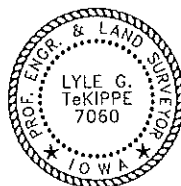
NOTE: Both rebars were shown as set on a Survey and Plat made by Paul H. Helland, recorded in the Chickasaw County Recorder's Office on August 20, 1980, in Deed Book 122, Page 281.

PLAN - VIEW

(Show a minimum of three reference ties to durable physical objects, relevant monuments and physical conditions that will enable recovery of the corner.)



I hereby certify that this land surveying document was prepared and the related survey work was performed by me or under my direct personal supervision and that I am a duly licensed Land Surveyor under the laws of the State of Iowa.



Lyle G. TeKippe 1-19-99  
Lyle G. TeKippe Date  
License number 7060  
My license renewal date is December 31, 2000.  
Sheets covered by this seal: Individual

List Corners to be Indexed

Corners	Section	Twp.	Range
---------	---------	------	-------

NW Corner B	3	94N	13W
Dayton Twp. Section 33			
N 1/4	3	94N	13W
Cor A Section 34 Dayton Twp			

170-203

Placed in tie book 1/22/99