

Section 27-95-13
 As referred to in
 Engr. Tie Book

County Engineer's Copy

TeKIPPE ENGINEERING, P.C., 128 South Vine Street, West Union, Iowa 52175 Phone (319) 422-5131

UNITED STATES PUBLIC LAND SURVEY CORNER CERTIFICATE

OF 27

Land Survey Monuments situated in Section 34, Township 95 North, Range 13 West, of the Fifth Principal Meridian, CHICKASAW County, Iowa.

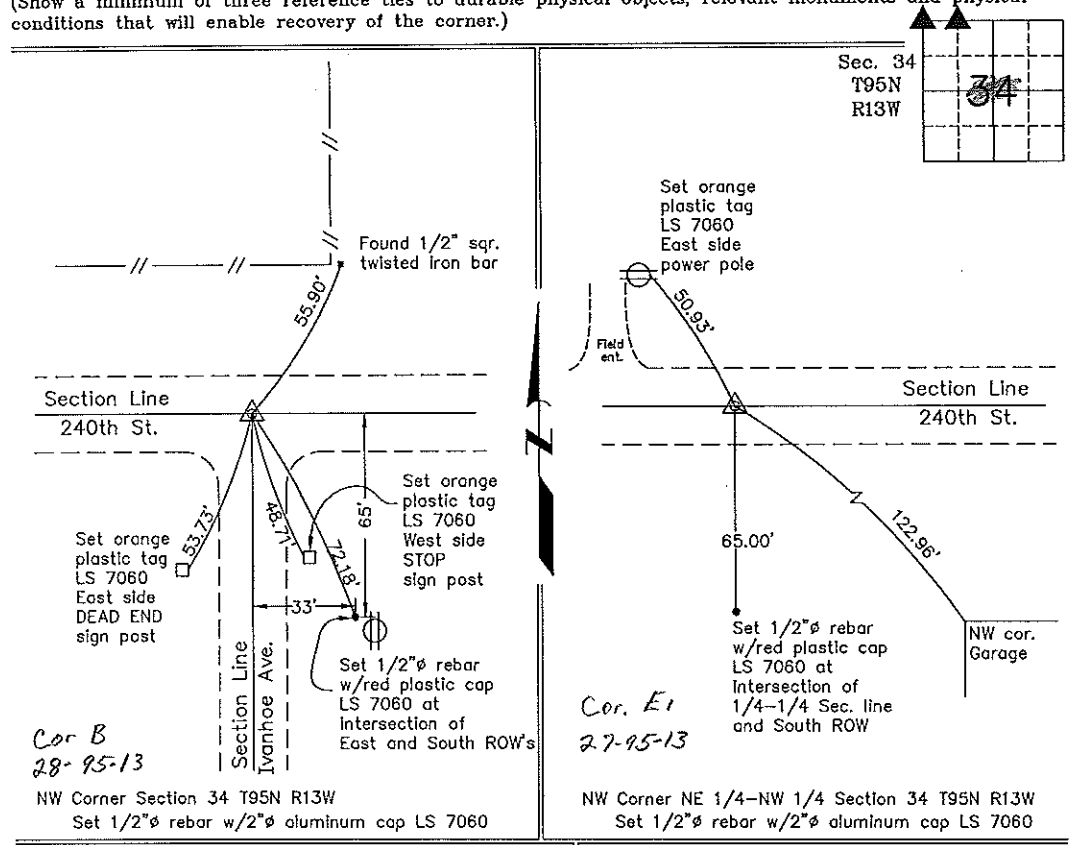
Previously recorded in none in County Recorder's Office.
 (book, page, document number, etc.)

(Show reason for preparing this certificate, the evidence and detailed procedures used in establishing the corner positions and monumentation found or placed.)

Monument Description and Remarks: NW Corner Section 34 T95N R13W: Set 1/2"Ø rebar w/2"Ø aluminum cap LS 7060 by intersecting the centerline tangent of 240th St., from the N 1/4 corner through the centerline of a bridge, with a single tie at the NW corner. The single tie was obtained from information in the Chickasaw County Engineer's Office in the Field Book "Dayton Twp. Corner Ties", Corner 'B', Section 28. NW Corner NE 1/4-NW 1/4 Section 34 T95N R13W: Set 1/2"Ø rebar w/2"Ø aluminum cap LS 7060 equidistant and on line between the NW Cor. and the N 1/4 Cor. of Sec. 34.

PLAN - VIEW

(Show a minimum of three reference ties to durable physical objects, relevant monuments and physical conditions that will enable recovery of the corner.)



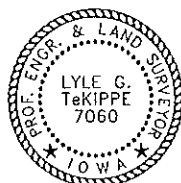
Cor B
 28-95-13

Cor. E1
 27-95-13

NW Corner Section 34 T95N R13W
 Set 1/2"Ø rebar w/2"Ø aluminum cap LS 7060

NW Corner NE 1/4-NW 1/4 Section 34 T95N R13W
 Set 1/2"Ø rebar w/2"Ø aluminum cap LS 7060

I hereby certify that this land surveying document was prepared and the related survey work was performed by me or under my direct personal supervision and that I am a duly licensed Land Surveyor under the laws of the State of Iowa.



Lyle G. TeKippe 1-19-99
 Lyle G. TeKippe Date

License number 7060
 My license renewal date is December 31, 2000.
 Sheets covered by this seal: Individual

List Corners to be Indexed			
Corners	Section	Twp.	Range
NW	34	95N	13W
Corner B section 28 Dayton Placed in tie book			
NW-NE-NW	34	95N	13W
Corner E1 section 34 Dayton			