

Section 33-95-13  
As referred to in  
Engr. Tie Book

County Engineer's Copy

TeKIPPE ENGINEERING, P.C., 128 South Vine Street, West Union, Iowa 52175 Phone (319) 422-5131

UNITED STATES PUBLIC LAND SURVEY CORNER CERTIFICATE

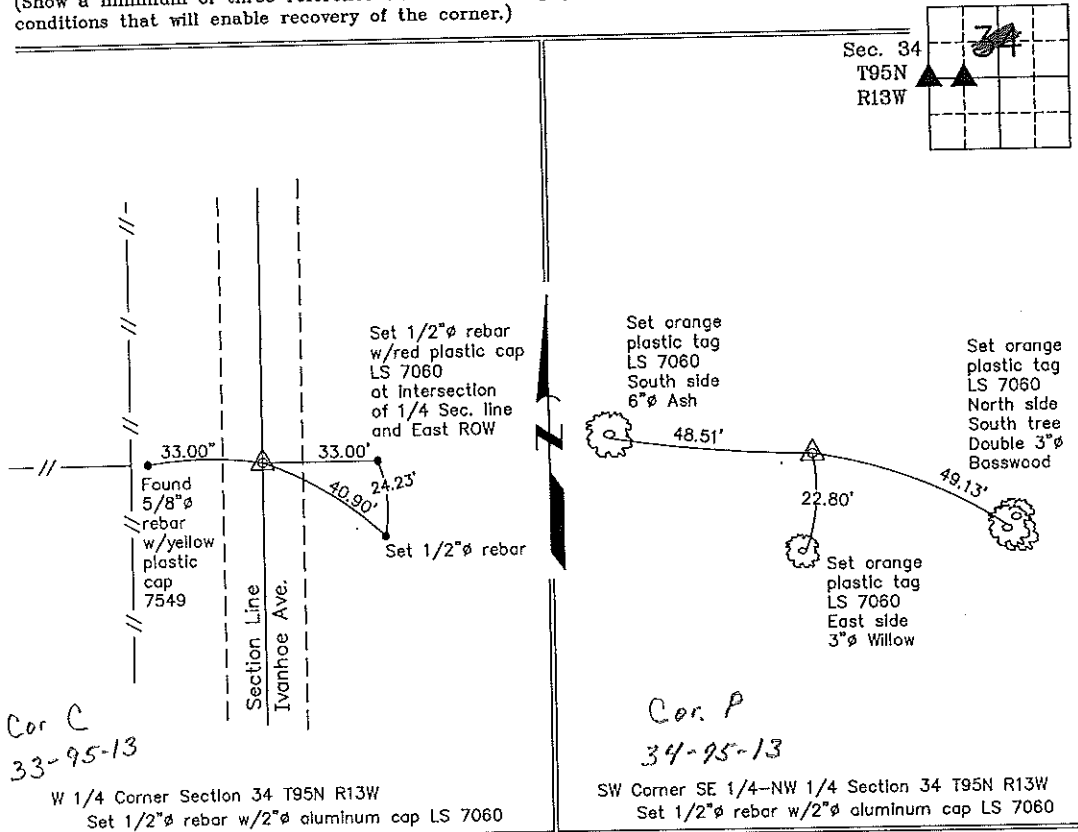
OF 33  
Land Survey Monuments situated in Section 34, Township 95 North, Range 13 West, of the Fifth Principal Meridian, CHICKASAW County, Iowa.  
Previously recorded in none in County Recorder's Office.  
(book, page, document number, etc.)

(Show reason for preparing this certificate, the evidence and detailed procedures used in establishing the corner positions and monumentation found or placed.)

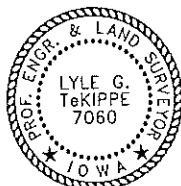
Monument Description and Remarks: W 1/4 Corner Section 34 T95N R13W: Set 1/2"Ø rebar w/2"Ø aluminum cap LS 7060 with a distance-distance intersection, using information from a Survey and Plat made by Thomas V. Craft, recorded in the Chickasaw County Recorder's Office on August 14, 1981, in Deed Book 124, Page 413. SW Corner SE 1/4-NW 1/4 Section 34 T95N R13W: Set 1/2"Ø rebar w/2"Ø aluminum cap LS 7060 equidistant and on line between the W 1/4 corner and the Center of Section 34.

PLAN - VIEW

(Show a minimum of three reference ties to durable physical objects, relevant monuments and physical conditions that will enable recovery of the corner.)



I hereby certify that this land surveying document was prepared and the related survey work was performed by me or under my direct personal supervision and that I am a duly licensed Land Surveyor under the laws of the State of Iowa.



Lyle G. TeKippe 1-19-99  
Lyle G. TeKippe Date  
License number 7060  
My license renewal date is December 31, 2000.  
Sheets covered by this seal: Individual

List Corners to be Indexed

Corners	Section	Twp.	Range
W 1/4	34	95N	13W
Corner C section 33 Dayton			
Placed in tie book			
SW-SE-NW	34	95N	13W
Corner Z section 33 Dayton			