

County Engineer's Copy

TeKIPPE ENGINEERING, P.C., 128 South Vine Street, West Union, Iowa 52175 Phone (319) 422-5131

# UNITED STATES PUBLIC LAND SURVEY CORNER CERTIFICATE

OF

Land Survey Monuments situated in Section 34, Township 95 North, Range 13 West, of the Fifth Principal Meridian, CHICKASAW County, Iowa. Previously recorded in (1) none (2) Book 148, Page 107 in County Recorder's Office. (book, page, document number, etc.)

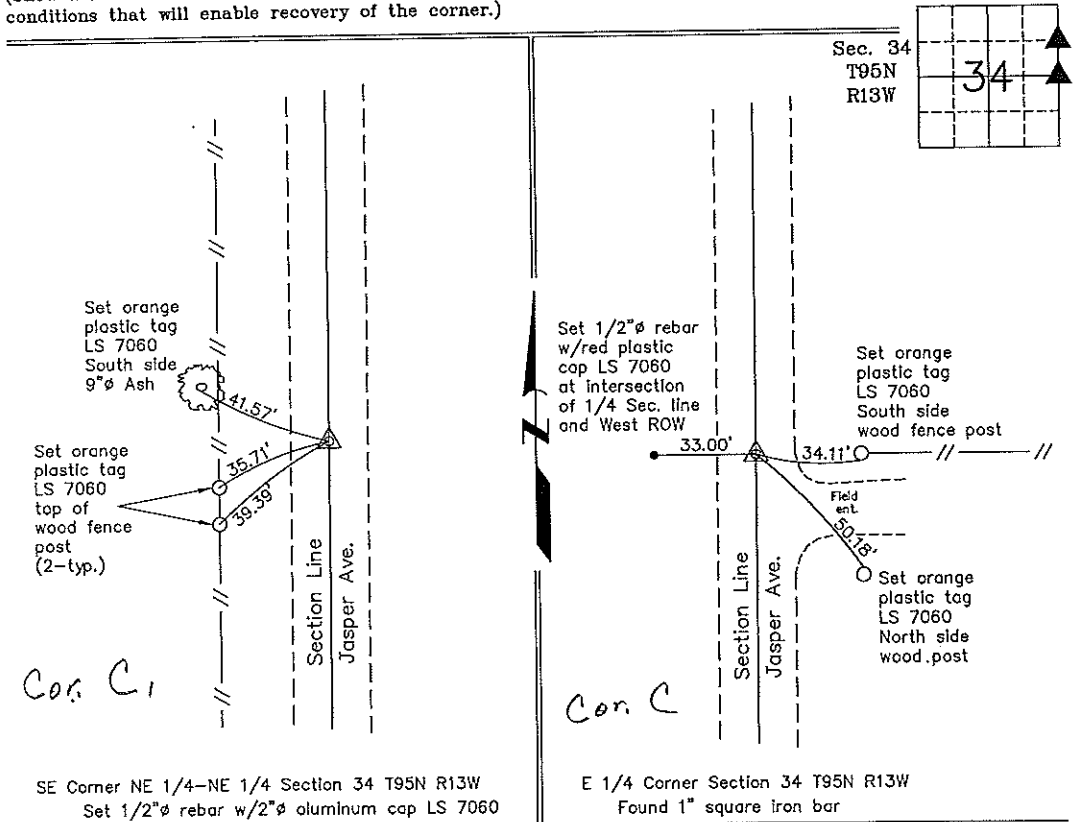
(Show reason for preparing this certificate, the evidence and detailed procedures used in establishing the corner positions and monumentation found or placed.)

Monument Description and Remarks: (1) SE Corner NE 1/4-NE 1/4 Section 34 T95N R13W: Set 1/2"Ø rebar w/2"Ø aluminum cap LS 7060 equidistant and on line between the NE corner and the E 1/4 corner of Section 34.

(2) E 1/4 Corner Section 34 T95N R13W: Found 1" square iron bar with information from a Corner Certificate recorded in the Chickasaw County Recorder's Office in Book 148, Page 107. All previous ties were missing, new ties were set.

## PLAN - VIEW

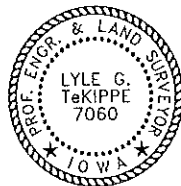
(Show a minimum of three reference ties to durable physical objects, relevant monuments and physical conditions that will enable recovery of the corner.)



SE Corner NE 1/4-NE 1/4 Section 34 T95N R13W  
Set 1/2"Ø rebar w/2"Ø aluminum cap LS 7060

E 1/4 Corner Section 34 T95N R13W  
Found 1" square iron bar

I hereby certify that this land surveying document was prepared and the related survey work was performed by me or under my direct personal supervision and that I am a duly licensed Land Surveyor under the laws of the State of Iowa.



*Lyle G. TeKippe* 1-19-99  
Lyle G. TeKippe Date  
License number 7060  
My license renewal date is December 31, 2000.  
Sheets covered by this seal: Individual

List Corners to be Indexed			
Corners	Section	Twp.	Range
SE-NE-NE	34	95N	13W
Corner C1 section 34 Dayton			
E 1/4	34	95N	13W
Corner C section 34 Dayton			
Placed in the Books for C only			

# UNITED STATES PUBLIC LAND SURVEY CORNER CERTIFICATE

OF

Land Survey Monuments situated in Section 34, Township 95, Range 13, of the Fifth Principal Meridian, Chickasaw County, Iowa.  
Previously recorded in N/A in County Recorder's Office.

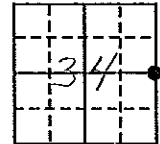
(book, page, document number, etc.)

(Show reason for preparing this certificate, the evidence and detailed procedures used in establishing the corner positions and monumentation found or placed.)

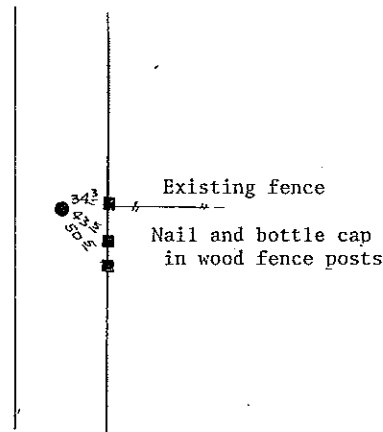
Monument Description and Remarks: Found 1" iron pin in center road

### PLAN - VIEW

(Show a minimum of three reference ties to durable physical objects, relevant monuments and physical conditions that will enable recovery of the corner.)



*Dayton*



*Cor. C*

East 1/4 corner  
34-95-13

I hereby certify that the survey work was completed and this certificate was prepared by me or under my direct personal supervision and that I am a duly registered land surveyor under the laws of the state of Iowa.

Signature: *Steve Busse*  
Name typed or printed: Steve Busse

Date: 10/8/91 Reg. No. 9018

Corners	List Corners to be Indexed		
	Section	Twp	Range
East 1/4	34	95	13

*Placed in tie book on 10/14/91 JFM*

SEAL