

TeKIPPE ENGINEERING, P.C., 128 South Vine Street, West Union, Iowa 52175 Phone (319) 422-5131

UNITED STATES PUBLIC LAND SURVEY CORNER CERTIFICATE

OF

Land Survey Monuments situated in Section 34, Township 95 North, Range 13 West, of the Fifth Principal Meridian, CHICKASAW County, Iowa.

Previously recorded in none in County Recorder's Office.
(book, page, document number, etc.)

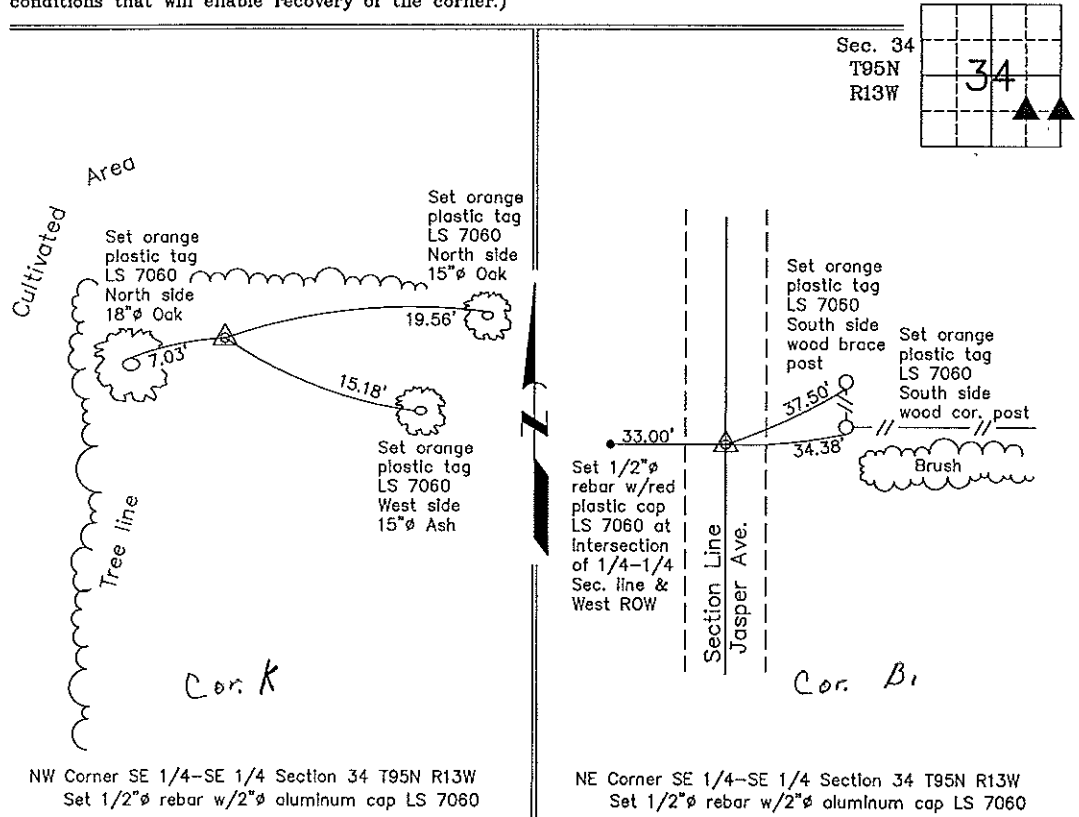
(Show reason for preparing this certificate, the evidence and detailed procedures used in establishing the corner positions and monumentation found or placed.)

Monument Description and Remarks: NW Corner SE 1/4-SE 1/4 Section 34 T95N R13W:
Set 1/2"Ø rebar w/2"Ø aluminum cap LS 7060 at the intersection of the
quarter-quarter section lines after the standard mathematical subdivision of
Section 34.

NE Corner SE 1/4-SE 1/4 Section 34 T95N R13W: Set 1/2"Ø rebar w/2"Ø aluminum
cap LS 7060 equidistant and on line between the E 1/4 corner and the SE corner
of Section 34.

PLAN - VIEW

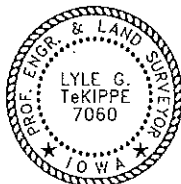
(Show a minimum of three reference ties to durable physical objects, relevant monuments and physical conditions that will enable recovery of the corner.)



NW Corner SE 1/4-SE 1/4 Section 34 T95N R13W
Set 1/2"Ø rebar w/2"Ø aluminum cap LS 7060

NE Corner SE 1/4-SE 1/4 Section 34 T95N R13W
Set 1/2"Ø rebar w/2"Ø aluminum cap LS 7060

I hereby certify that this land surveying document was prepared and the related survey work was performed by me or under my direct personal supervision and that I am a duly licensed Land Surveyor under the laws of the State of Iowa.



Lyle G. TeKippe 1-19-99
Lyle G. TeKippe Date
License number 7080
My license renewal date is December 31, 2000.
Sheets covered by this seal: Individual

List Corners to be Indexed			
Corners	Section	Twp.	Range
NW-SE-SE	34	95N	13W
Corner Y section 34 Dayton			
NE-SE-SE	34	95N	13W
Corner B1 section 34 Dayton			