

Section 33-95-13
As referred to in
Engr. Tie Book

County Engineer's
Copy

TeKIPPE ENGINEERING, P.C., 128 South Vine Street, West Union, Iowa 52175 Phone (319) 422-5131

UNITED STATES PUBLIC LAND SURVEY CORNER CERTIFICATE

OF ³³₃₄
Land Survey Monuments situated in Section 34, Township 95 North, Range 13 West, of the Fifth Principal Meridian, CHICKASAW County, Iowa.
Previously recorded in none in County Recorder's Office.
(book, page, document number, etc.)

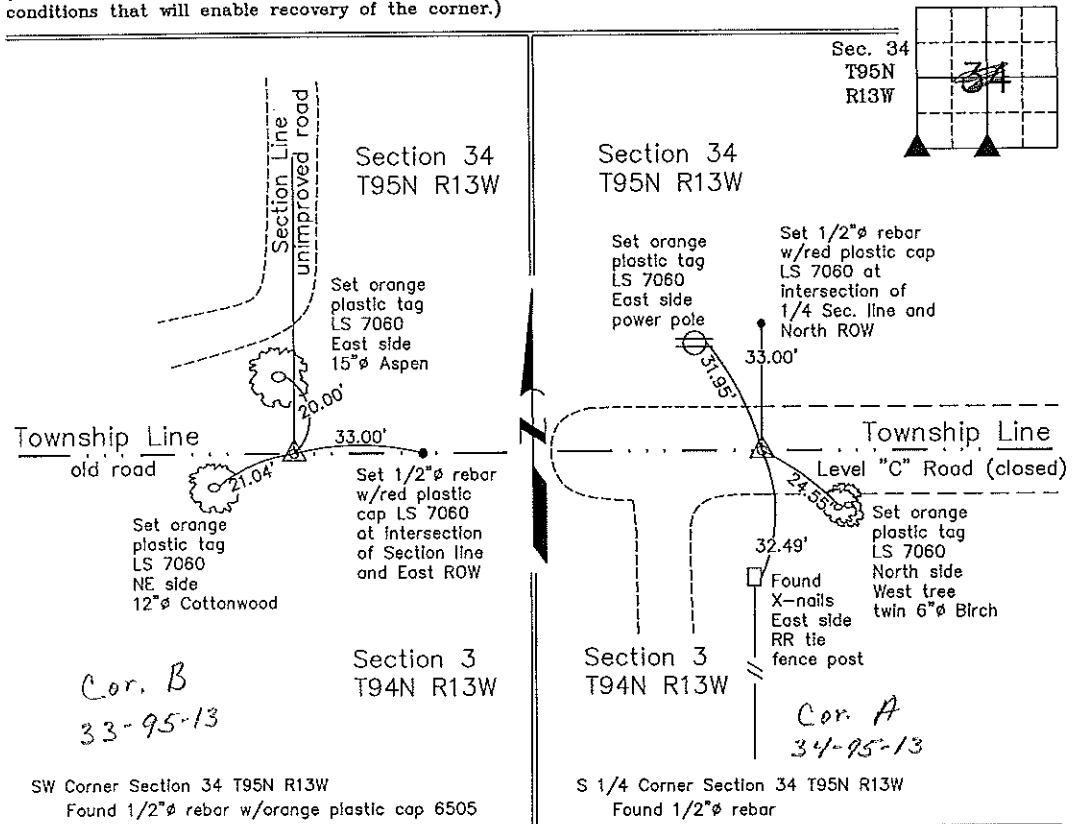
(Show reason for preparing this certificate, the evidence and detailed procedures used in establishing the corner positions and monumentation found or placed.)

Monument Description and Remarks: SW Corner Section 34 T95N R13W: Found 1/2"Ø rebar w/orange plastic cap 6505.
S 1/4 Corner Section 34 T95N R13W: Found 1/2"Ø rebar.

NOTE: Both rebars were shown as set on a Survey and Plat made by Paul H. Helland, recorded in the Chickasaw County Recorder's Office on August 20, 1980, in Deed Book 122, Page 281.

PLAN - VIEW

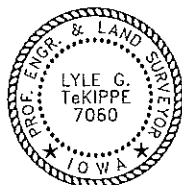
(Show a minimum of three reference ties to durable physical objects, relevant monuments and physical conditions that will enable recovery of the corner.)



Cor. B
33-95-13

Cor. A
34-95-13

I hereby certify that this land surveying document was prepared by me or under my direct personal supervision and that I am a duly licensed Land Surveyor under the laws of the State of Iowa.



Lyle G. TeKippe 1-19-99
Lyle G. TeKippe Date
License number 7060
My license renewal date is December 31, 2000.
Sheets covered by this seal: Individual

List Corners to be Indexed

| Corners | Section | Twp. | Range |
|----------------------------|---------|------|-------|
| SW | 34 | 95N | 13W |
| Corner B section 33 Dayton | | | |
| S 1/4 | 34 | 95N | 13W |
| Corner A section 34 Dayton | | | |

Section 34-95-13
 As referred to in
 Engr. Tie Book

County Engineer's Copy

TeKIPPE ENGINEERING, P.C., 128 South Vine Street, West Union, Iowa 52175 Phone (319) 422-5131

UNITED STATES PUBLIC LAND SURVEY CORNER CERTIFICATE

OF 24 95
 Land Survey Monuments situated in Section 3, Township 94 North, Range 13 West, of the Fifth Principal Meridian, CHICKASAW County, Iowa.
 Previously recorded in none in County Recorder's Office.
(book, page, document number, etc.)

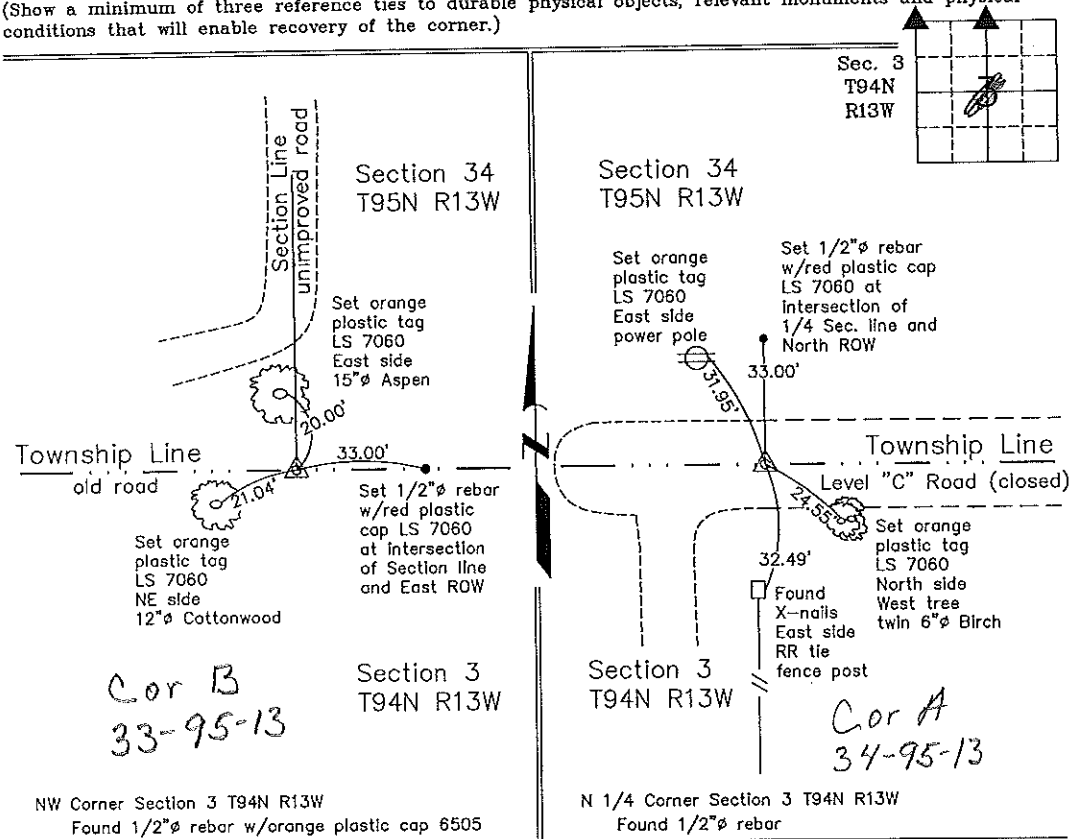
(Show reason for preparing this certificate, the evidence and detailed procedures used in establishing the corner positions and monumentation found or placed.)

Monument Description and Remarks: NW Corner Section 3 T94N R13W: Found 1/2"Ø rebar w/orange plastic cap 6505.
N 1/4 Corner Section 3 T94N R13W: Found 1/2"Ø rebar.

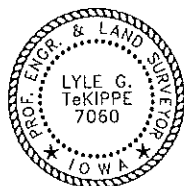
NOTE: Both rebars were shown as set on a Survey and Plat made by Paul H. Helland, recorded in the Chickasaw County Recorder's Office on August 20, 1980, in Deed Book 122, Page 281.

PLAN - VIEW

(Show a minimum of three reference ties to durable physical objects, relevant monuments and physical conditions that will enable recovery of the corner.)



I hereby certify that this land surveying document was prepared and the related survey work was performed by me or under my direct personal supervision and that I am a duly licensed Land Surveyor under the laws of the State of Iowa.



Lyle G. TeKippe 1-19-99
 Lyle G. TeKippe Date
 License number 7060
 My license renewal date is December 31, 2000.
 Sheets covered by this seal: Individual

List Corners to be Indexed

| Corners | Section | Twp. | Range |
|-----------------------------|---------|------|-------|
| NW Corner B | 3 | 94N | 13W |
| Dayton Twp. Section 33 | | | |
| N 1/4 | 3 | 94N | 13W |
| Cor A Section 34 Dayton Twp | | | |

170-203

Placed in tie book 1/22/99

Section 34-95-13
 As referred to in
 Engr. Tic Book

2003-0321

PREPARED BY ROBERT L. HOLZE MID-WEST LAND SURVEYORS, INC., P.O. BOX 1352, MASON CITY, IOWA 50402-1352. (641)-423-1451

UNITED STATES PUBLIC LAND SURVEY CORNER CERTIFICATE

OF 3 95th

Land Survey Monuments situated in Section 3, Township 94N, Range 13W, of the Fifth Principal Meridian, CHICKASAW County, Iowa Previously recorded in _____ in County Recorder's Office.

(book, page, document, number, etc.)

(Show reason for preparing this certificate, the evidence and detailed procedures used in establishing the corner positions and monumentation found or placed.)

Monument Description and Remarks:

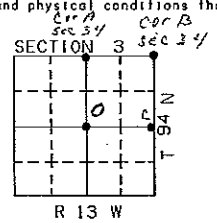
- ① E1/4 CORNER FOUND 1/2" REBAR
- ② N1/4 CORNER FOUND 1/2" REBAR
- ③ NORTHEAST CORNER FOUND 5/8" REBAR WITH CAP #7549
- ④ CENTER SET P&C AT FENCE CORNER

PLAN-VIEW

(Show a minimum of three reference ties to durable physical objects, relevant monuments and physical conditions that will enable recovery of corner.)

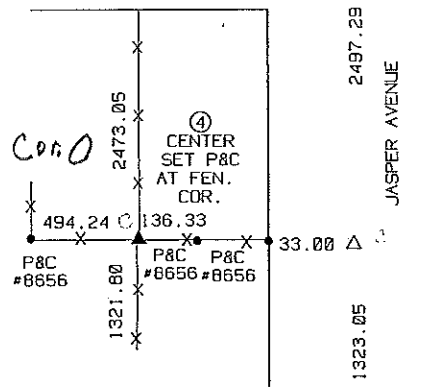
②
 N1/4 COR.
 FND. 1/2"
 REBAR AS
 PREVIOUSLY
 RECORDED
 BK. 170 PG. 203

③
 NE COR.
 FND. 5/8" REBAR
 W/CAP #7549
 AS PREVIOUSLY
 RECORDED
 BK. 170 PG. 204



39-15-13
 Cor A LEVEL "C" ROAD

250TH STREET
 Cor B
 34-95-13



I hereby certify that the survey work was completed and this certificate was prepared by me or under my direct personal supervision and that I am a duly Licensed Land Surveyor under the laws of the State of Iowa.

Signature: Robert L. Holze
 Robert L. Holze

Date: 1/16/2003 Reg. No. 8656

My registration renewal date is December 31, 2003.

List of Corners to be Indexed

| Corners | Section | Twp. | Range |
|-------------|---------|------|-------|
| ① E1/4 COR. | 3 | 94N | 13W |
| ② N1/4 COR. | 3 | 94N | 13W |
| ③ NE COR. | 3 | 94N | 13W |
| ④ CENTER | 3 | 94N | 13W |

Filed 2-20-03