

Chickasaw Co. Recorder
Cindy Messersmith
Fee Book 2008-1458

07/28/2008 @1057AM
SCC: SEC COR CERT
Book: Page: # Pages: 1
Total Fees: \$7.00

Herold - Recks Surveying, 25 1/2 East Main Street, Suite 204, New Hampton, IA 50659, Ph. 641-394-2725

UNITED STATES PUBLIC LAND SURVEY CORNER CERTIFICATE

Land Survey Monuments situated in Section 27, Township 95 North, Range 13 West of the Fifth Principal Meridian, Chickasaw County, Iowa. Previously recorded in 1.) N/A, 2.) Bk. 158, Pg. 474, in the Chickasaw County Recorder's office.

This certificate is being prepared in compliance with Iowa Code Chapter 355.11 because:

- 1.) There is no certificate on file for this corner.
- There are no longer three valid ties of record.
- 2.) There are changes to reference ties of record.
- 2.) There is change of monumentation of record.
- 2.) To clarify description of record monument (ties).

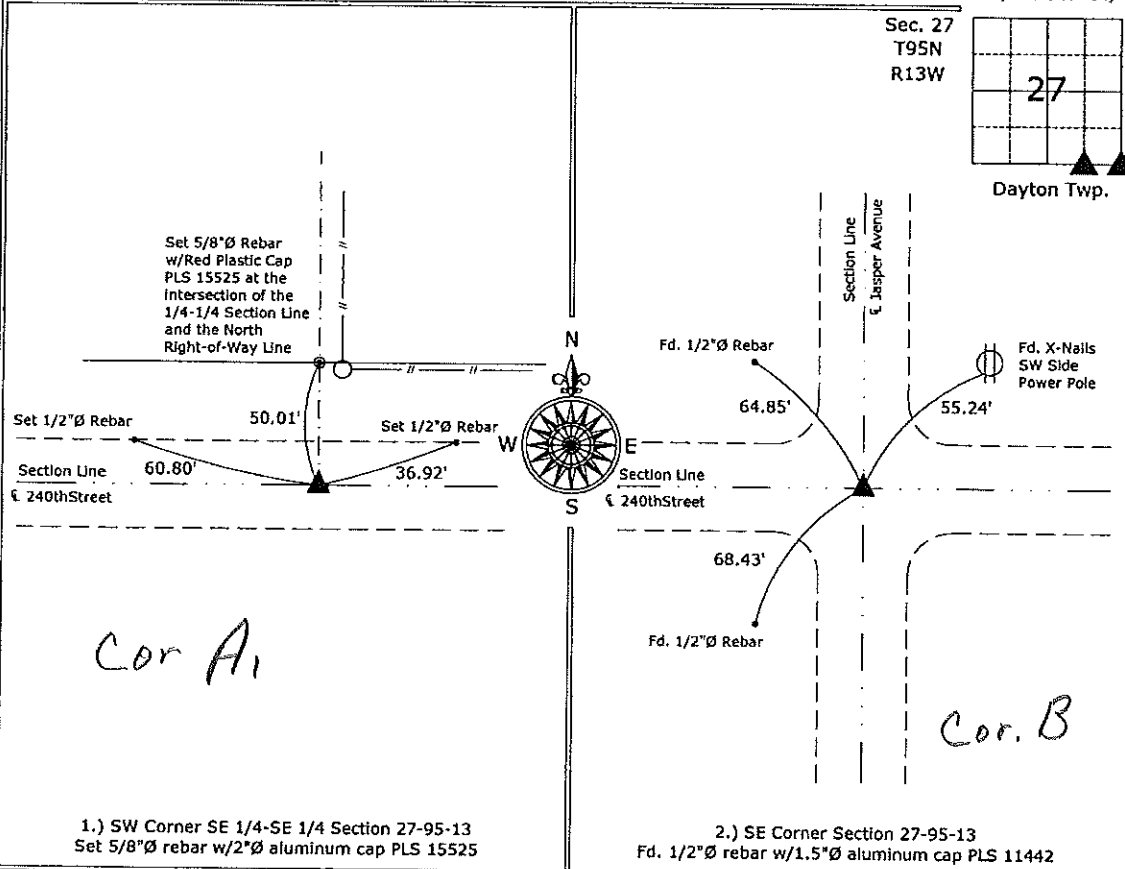
Monument Description and Remarks:

1.) SW Corner SE 1/4-SE 1/4 Section 27-95-13: Set 5/8"Ø rebar w/2"Ø aluminum cap PLS 15525 equidistant and on line between the S 1/4 Corner and the SE Corner of the Section.

2.) SE Corner Section 27-95-13: Fd. 1/2"Ø rebar w/1.5"Ø aluminum cap PLS 11442, the previous Corner Certificate indicated the monument was a 1/2"Ø Rebar with w/Cap LS 7060, the monument found matches 1 of the ties exactly and the other 2 are close, this is probably due to the vertical difference in the ties to the corner.

PLAN - VIEW

(Show a minimum of three reference ties to durable physical objects, relevant monuments and physical conditions that will enable recovery of the corner.)



1.) SW Corner SE 1/4-SE 1/4 Section 27-95-13
Set 5/8"Ø rebar w/2"Ø aluminum cap PLS 15525

2.) SE Corner Section 27-95-13
Fd. 1/2"Ø rebar w/1.5"Ø aluminum cap PLS 11442



I hereby certify that this land surveying document was prepared and the related survey work was performed by me or under my direct personal supervision and that I am a duly licensed Land Surveyor under the laws of the State of Iowa.

Paul R. Herold 7-25-08
Paul R. Herold Date:

License number 15525
My license renewal date is December 31, 2008.
Sheets covered by this seal: Individual sheet only

List Corners to be Indexed			
Corners	Section	Twp.	Range
SW-SE-SE	27	95	13
SE	27	95	13

Project Number: 2008-068
FB: Chickasaw County 1, Pgs. 61-63

File: S:\Projects\2008\2008-068.dwg, 7/25/2008 09:50:34