

Chickasaw Co. Recorder
 Cindy Messersmith
Fee Book 2008-1458
 07/28/2008 @1057AM
 SCC: SEC COR CERT
 Book: Page: # Pages: 1
 Total Fees: \$7.00

Herold - Recks Surveying, 25 1/2 East Main Street, Suite 204, New Hampton, IA 50659, Ph. 641-394-2725

UNITED STATES PUBLIC LAND SURVEY CORNER CERTIFICATE

Land Survey Monuments situated in Section 27, Township 95 North, Range 13 West of the Fifth Principal Meridian, Chickasaw County, Iowa. Previously recorded in 1.) N/A, 2.) Bk. 158, Pg. 474, in the Chickasaw County Recorder's office.

This certificate is being prepared in compliance with Iowa Code Chapter 355.11 because:

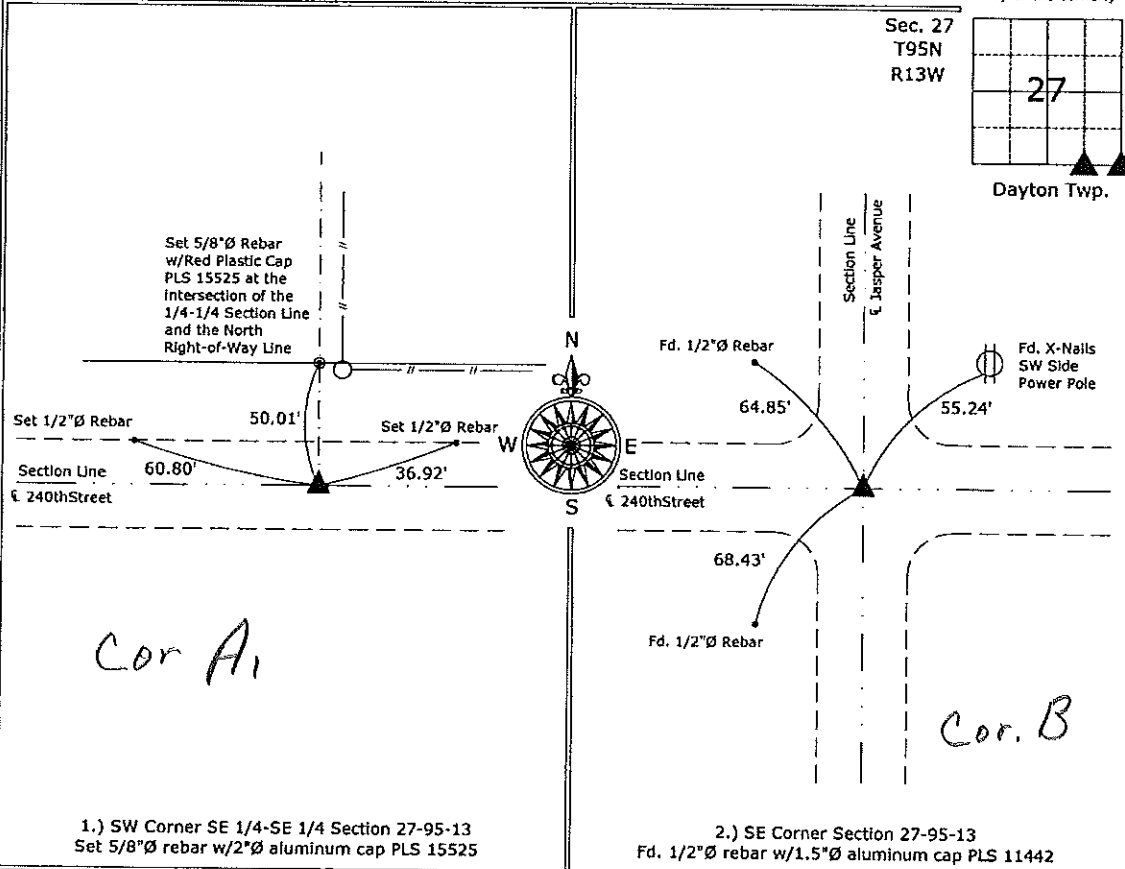
- 1.) There is no certificate on file for this corner.
- There are no longer three valid ties of record.
- 2.) There are changes to reference ties of record.
- There is change of monumentation of record.
- 2.) To clarify description of record monument (ties).

Monument Description and Remarks:

- 1.) SW Corner SE 1/4-SE 1/4 Section 27-95-13: Set 5/8"Ø rebar w/2"Ø aluminum cap PLS 15525 equidistant and on line between the S 1/4 Corner and the SE Corner of the Section.
- 2.) SE Corner Section 27-95-13: Fd. 1/2"Ø rebar w/1.5"Ø aluminum cap PLS 11442, the previous Corner Certificate indicated the monument was a 1/2"Ø Rebar with w/Cap LS 7060, the monument found matches 1 of the ties exactly and the other 2 are close, this is probably due to the vertical difference in the ties to the corner.

PLAN - VIEW

(Show a minimum of three reference ties to durable physical objects, relevant monuments and physical conditions that will enable recovery of the corner.)



I hereby certify that this land surveying document was prepared and the related survey work was performed by me or under my direct personal supervision and that I am a duly licensed Land Surveyor under the laws of the State of Iowa.

Paul R. Herold 7-25-08
 Paul R. Herold Date:
 License number 15525
 My license renewal date is December 31, 2008.
 Sheets covered by this seal: Individual sheet only

List Corners to be Indexed			
Corners	Section	Twp.	Range
SW-SE-SE	27	95	13
SE	27	95	13

Project Number: 2008-068
 FB: Chickasaw County 1, Pgs. 61-63

File: S:\Projects\2008\2008-068.dwg, 7/25/2008 09:50:34

Section 26-95-13
 As referred to in
 Engr. Tie Book

UNITED STATES PUBLIC LAND SURVEY CORNER CERTIFICATE

OF

Land Survey Monuments situated in Section 35, Township 95 North, Range 13 West, of the Fifth Principal Meridian, CHICKASAW County, Iowa. Previously recorded in NONE in County Recorder's Office.

(book page, document number, etc.)

(Show reason for preparing this certificate, the evidence and detailed procedures used in establishing the corner positions and monumentation found or placed.)

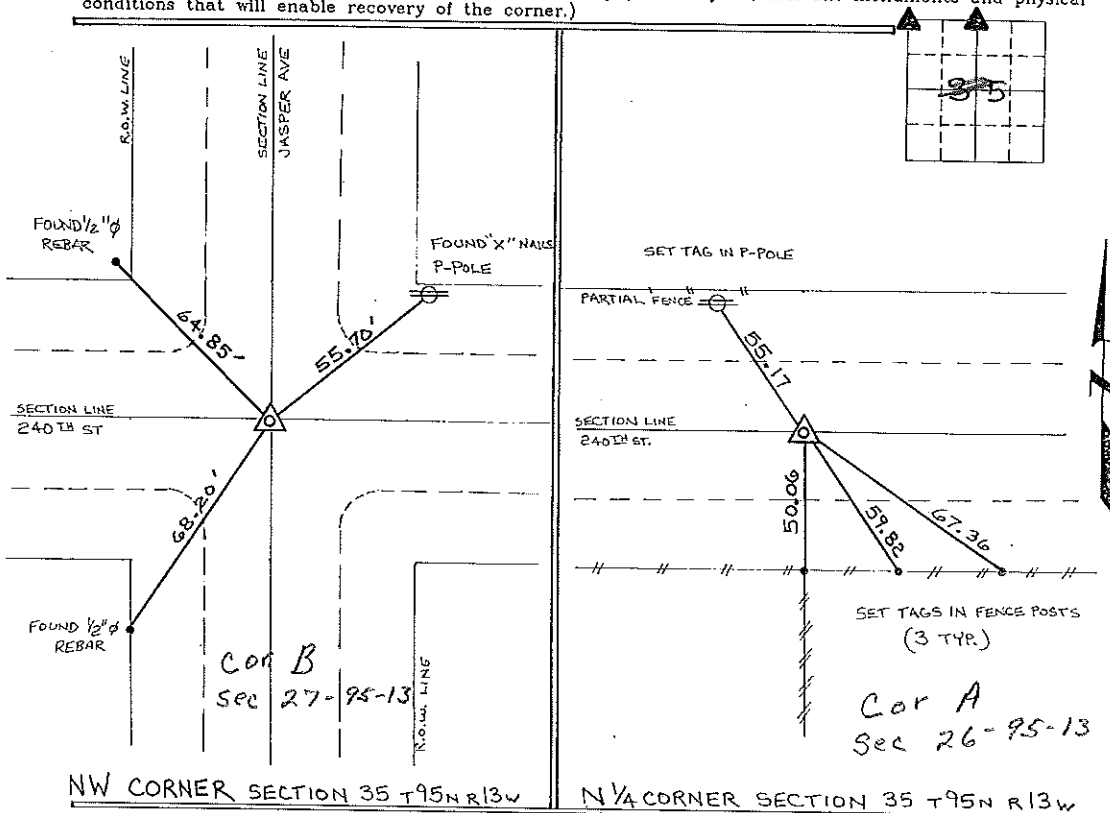
Monument Description and Remarks: NW CORNER SECTION 35 T95N R13W: SET 1/2" Ø REBAR w/CAP 7060 FROM TIES OBTAINED FROM COUNTY ENGINEERS OFFICE.

N 1/4 CORNER SECTION 35 T95N R13W: FOUND 1" SQR IRON BAR 0.3 DEEP

PLAN - VIEW

Cor B Sec 27
 Cor A Sec 26

(Show a minimum of three reference ties to durable physical objects, relevant monuments and physical conditions that will enable recovery of the corner.)



NW CORNER SECTION 35 T95N R13W

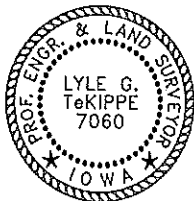
N 1/4 CORNER SECTION 35 T95N R13W

I hereby certify that the survey work was completed and this certificate was prepared by me or under my direct personal supervision and that I am a duly registered land surveyor under the laws of the state of Iowa.

Signature: Lyle G. TeKippe
 Lyle G. TeKippe

Date: 8-22-95 Reg. No. 7060
 My Registration Renewal Date is December 31, 1996

Seal



Corners	Section	Twp.	Range
NW	35	95N	13W
B	27-95-13		
N 1/4	35	95N	13W
A	26-95-13		

Placed in tie book
 9/15/95