

Section 27-95-13
As referred to in
Engr. Tie Book

County Engineer's Office

TeKIPPE ENGINEERING, P.C., 128 South Vine Street, West Union, Iowa 52175 Phone (319) 422-6131

UNITED STATES PUBLIC LAND SURVEY CORNER CERTIFICATE

OF 27

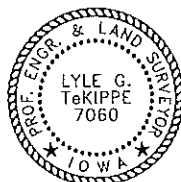
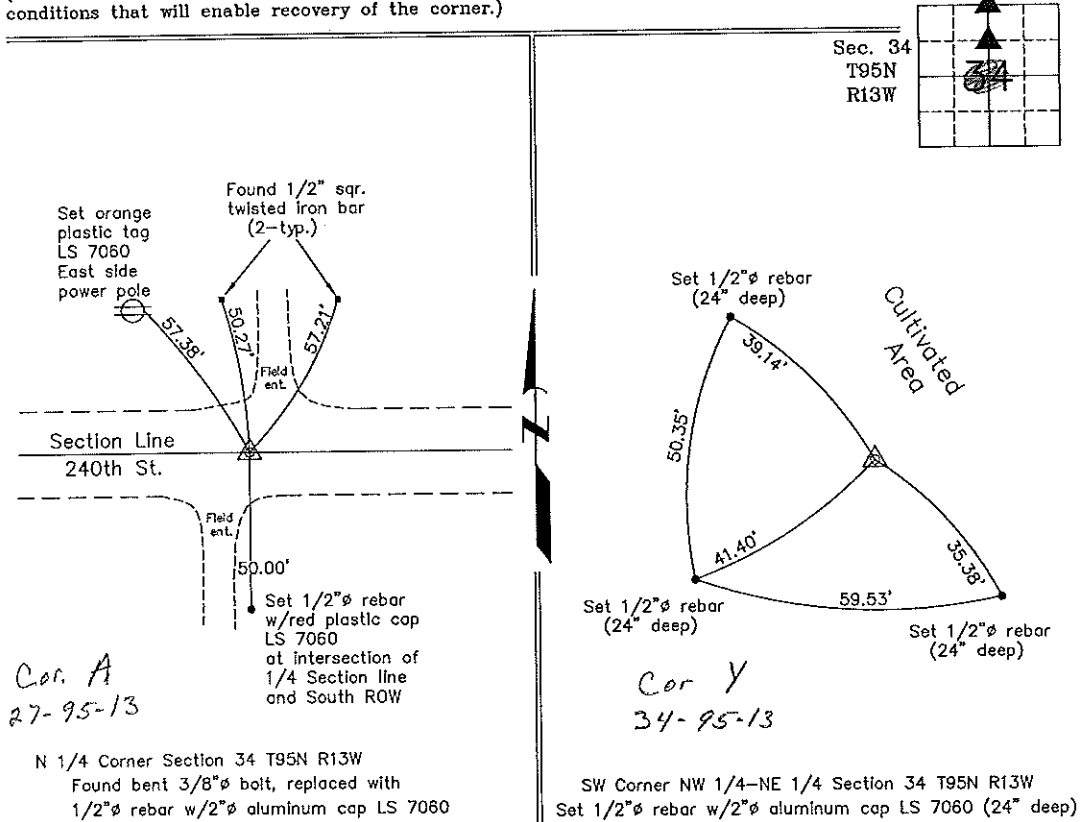
Land Survey Monuments situated in Section 34, Township 95 North, Range 13 West, of the Fifth Principal Meridian, CHICKASAW County, Iowa. Previously recorded in none in County Recorder's Office.
(book, page, document number, etc.)

(Show reason for preparing this certificate, the evidence and detailed procedures used in establishing the corner positions and monumentation found or placed.)

Monument Description and Remarks: N 1/4 Corner Section 34 T95N R13W: Found bent 3/8" ϕ bolt, replaced with 1/2" ϕ rebar w/2" ϕ aluminum cap LS 7060. Corner was found from ties with information from the Chickasaw County Engineer's Office in the Field Book "Dayton Twp. Corner Ties", as corner 'A' in Section 27.
SW Corner NW 1/4-NE 1/4 Section 34 T95N R13W: Set 1/2" ϕ rebar w/2" ϕ aluminum cap LS 7060 equidistant and on line between the N 1/4 corner and the Center of Section 34. NOTE: Corner falls in a cultivated field and was set 24" deep.

PLAN - VIEW

(Show a minimum of three reference ties to durable physical objects, relevant monuments and physical conditions that will enable recovery of the corner.)



I hereby certify that this land surveying document was prepared and the related survey work was performed by me or under my direct personal supervision and that I am a duly licensed Land Surveyor under the laws of the State of Iowa.
Lyle G. TeKippe 1-19-99
Lyle G. TeKippe Date
License number 7060
My license renewal date is December 31, 2000.
Sheets covered by this seal: Individual

List Corners to be Indexed			
Corners	Section	Twp.	Range
N 1/4	34	95N	13W
Corner A section 27 Dayton Referenced in tie book			
SW-NW-NE	34	95N	13W
Corner X section 34 Dayton			