

Chickasaw Co. Recorder
 Cindy Messersmith
Fee Book 2007-1008
 05/16/2007 @0337PM
 SCC SEC COR CERT
 Book: Page: # Pages: 1
 Total Fees: \$7.00

Herold - Recks Surveying, 25 1/2 East Main Street, Suite 204, New Hampton, IA 50659, Ph. 641-394-2725

CORRECTIVE UNITED STATES PUBLIC LAND SURVEY CORNER CERTIFICATE

Land Survey Monuments situated in:
 Section 35, Township 95 North, Range 13 West of the Fifth Principal Meridian,
Chickasaw County, Iowa. Previously recorded in 1.} Bk. 162, Pg. 328
2.} None
 in County Recorder's Office.

This Corrective Section Corner Certificate is to supersede the one recorded as Doc. #2007-0975, in order to correct the previous Book and page of the South 1/4 Corner (it was listed as 163-328 and is actually 162-328).

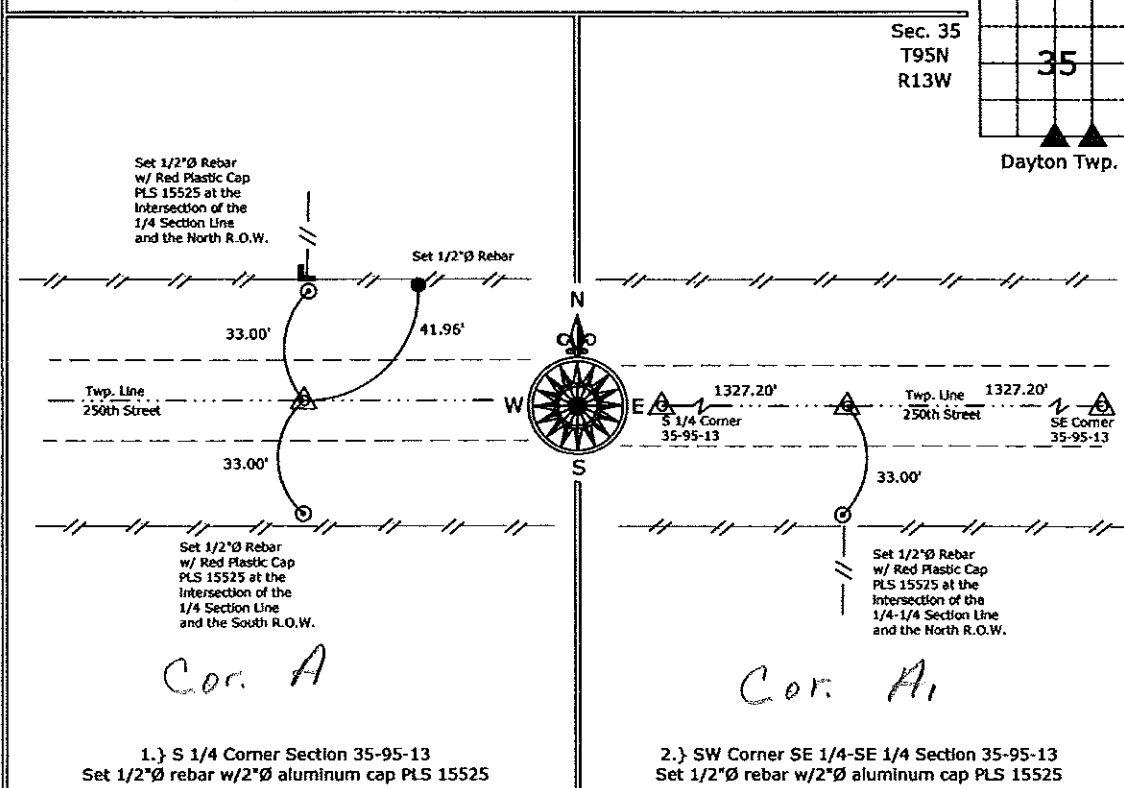
(Show reason for preparing this certificate, the evidence and detailed procedures used in establishing the corner positions and monumentation found or placed.)

Monument Description and Remarks:

- 1.) S 1/4 Corner Section 35-95-13, Fd. Bent 80d Nail from the previous Section Corner Certificate, removed and Set 1/2"Ø rebar w/2"Ø aluminum cap PLS 15525 as a more substantial monument.
- 2.) SW Corner SE 1/4-SE 1/4 Section 35-95-13, Set 1/2"Ø rebar w/2"Ø aluminum cap PLS 15525 midway and on line between the S 1/4 Corner and the SE Corner.

PLAN - VIEW

(Show a minimum of three reference ties to durable physical objects, relevant monuments and physical conditions that will enable recovery of the corner.)



1.) S 1/4 Corner Section 35-95-13
 Set 1/2"Ø rebar w/2"Ø aluminum cap PLS 15525

2.) SW Corner SE 1/4-SE 1/4 Section 35-95-13
 Set 1/2"Ø rebar w/2"Ø aluminum cap PLS 15525



I hereby certify that this land surveying document was prepared and the related survey work was performed by me or under my direct personal supervision and that I am a duly licensed Land Surveyor under the laws of the State of Iowa.

Paul R. Herold 5-16-07
 Paul R. Herold Date:
 License number 15525
 My license renewal date is December 31, 2008.
 Sheets covered by this seal: Individual Sheet Only

List Corners to be Indexed			
Corners	Section	Twp.	Range
S 1/4	35	95	13
SW-SE-SE	35	95	13

Project Number: 2007-033

FB: Chickasaw County 1, Pgs. 13-20

File: D:\My Projects\2007\2007-033\dwg\2007-031-032-033.dwg, 5/15/2007 6:35:39 PM

Section 35-95-13
 As referred to in
 Engr. Tie Book

TeKIPPE ENGINEERING, P.C., 128 South Vine Street, West Union, Iowa 52175 Phone (319) 422-5131

UNITED STATES PUBLIC LAND SURVEY CORNER CERTIFICATE

OF

Land Survey Monuments situated in Section 2, Township 94 North, Range 13 West, of the Fifth Principal Meridian, CHICKASAW County, Iowa. Previously recorded in NONE in County Recorder's Office.

(Show reason for preparing this certificate, the evidence and detailed procedures used in establishing the corner positions and monumentation found or placed.)

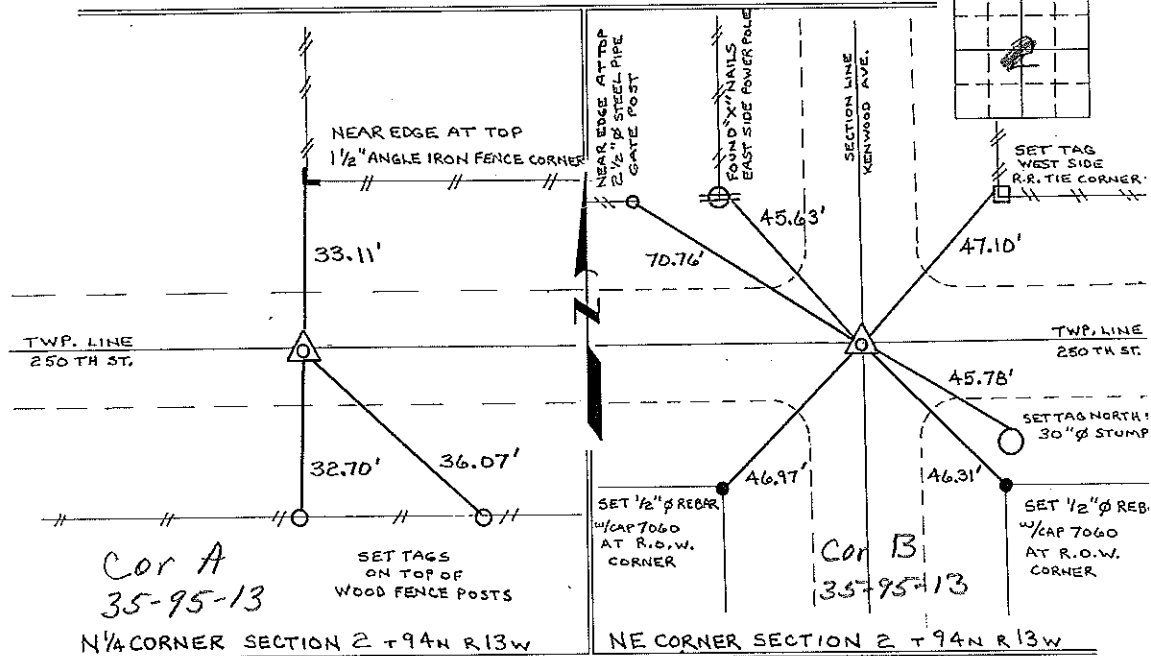
Monument Description and Remarks: N 1/4 CORNER SECTION 2 T 94 N R 13 W: FOUND 80 d NAIL, FROM INFORMATION OBTAINED FROM THE COUNTY ENGINEER'S OFFICE, IN FIELD BOOK "DAYTON TWP. CORNER TIES".

NE CORNER SECTION 2 T 94 N R 13 W: FOUND 5/8" φ REBAR, FROM INFORMATION OBTAINED FROM THE COUNTY ENGINEER'S OFFICE, IN FIELD BOOK "DAYTON TWP. CORNER TIES".

PLAN - VIEW

Cor A
 Sec 35
 Cor B
 Sec 35-95-

(Show a minimum of three reference ties to durable physical objects, relevant monuments and physical conditions that will enable recovery of the corner.)



N 1/4 CORNER SECTION 2 T 94 N R 13 W

NE CORNER SECTION 2 T 94 N R 13 W

I hereby certify that the survey work was completed and this certificate was prepared by me or under my direct personal supervision and that I am a duly registered land surveyor under the laws of the state of Iowa.

Signature: Lyle G. TeKippe
 Lyle G. TeKippe

Date: 11-1-96 Reg. No. 7080
 My Registration Renewal Date is December 31, 1998



Corners	Section	Twp.	Range
N 1/4	2	94 N	13 W
Cor A	35	95-13	
NE	2	94 N	13 W
Cor B	35-95-13		

Placed in tie book 11/2/96 JPM