

Chickasaw Co. Recorder
 Cindy Messersmith
Fee Book 2007-1008
 05/16/2007 @0337PM
 SCC SEC COR CERT
 Book: Page: # Pages: 1
 Total Fees: \$7.00

Herold - Recks Surveying, 25 1/2 East Main Street, Suite 204, New Hampton, IA 50659, Ph. 641-394-2725

CORRECTIVE UNITED STATES PUBLIC LAND SURVEY CORNER CERTIFICATE

Land Survey Monuments situated in:
 Section 35, Township 95 North, Range 13 West of the Fifth Principal Meridian,
Chickasaw County, Iowa. Previously recorded in 1.} Bk. 162, Pg. 328
2.} None
 in County Recorder's Office.

This Corrective Section Corner Certificate is to supersede the one recorded as Doc. #2007-0975, in order to correct the previous Book and page of the South 1/4 Corner (It was listed as 163-328 and is actually 162-328).

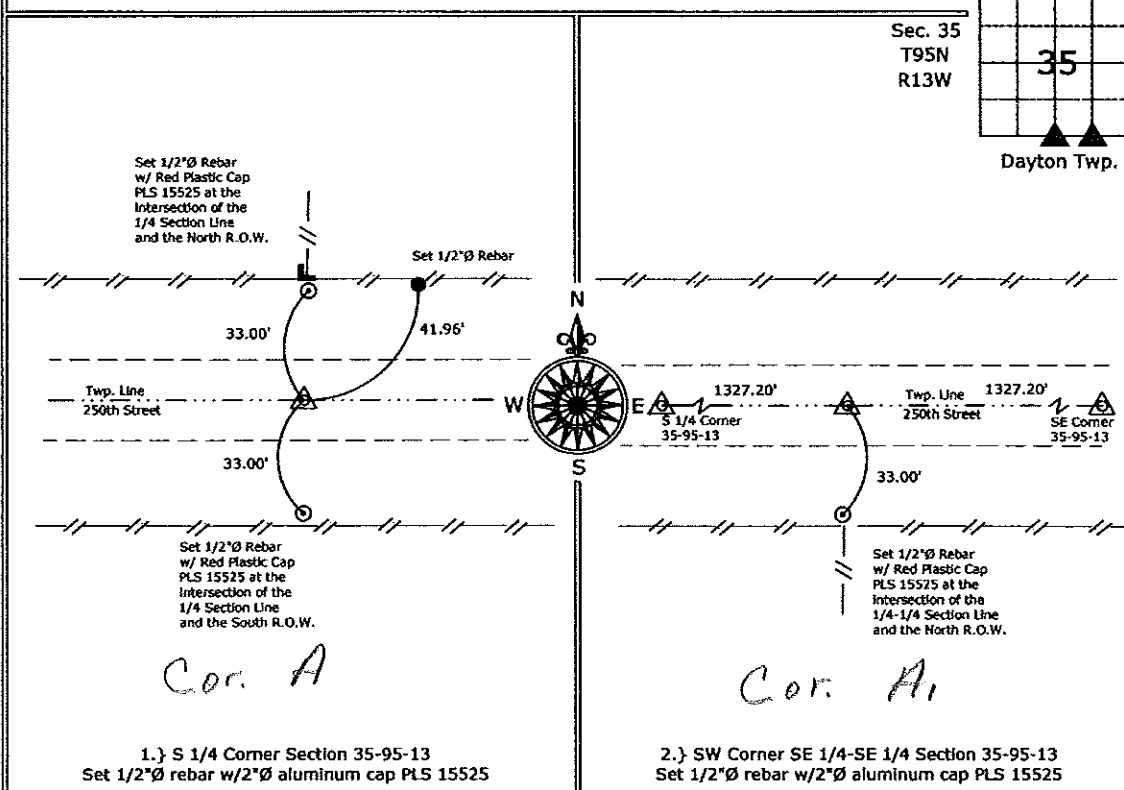
(Show reason for preparing this certificate, the evidence and detailed procedures used in establishing the corner positions and monumentation found or placed.)

Monument Description and Remarks:

- 1.) S 1/4 Corner Section 35-95-13, Fd. Bent 80d Nail from the previous Section Corner Certificate, removed and Set 1/2"Ø rebar w/2"Ø aluminum cap PLS 15525 as a more substantial monument.
- 2.) SW Corner SE 1/4-SE 1/4 Section 35-95-13, Set 1/2"Ø rebar w/2"Ø aluminum cap PLS 15525 midway and on line between the S 1/4 Corner and the SE Corner.

PLAN - VIEW

(Show a minimum of three reference ties to durable physical objects, relevant monuments and physical conditions that will enable recovery of the corner.)



I hereby certify that this land surveying document was prepared and the related survey work was performed by me or under my direct personal supervision and that I am a duly licensed Land Surveyor under the laws of the State of Iowa.

Paul R. Herold 5-16-07
 Paul R. Herold Date:

License number 15525
 My license renewal date is December 31, 2008.
 Sheets covered by this seal: Individual Sheet Only

List Corners to be Indexed			
Corners	Section	Twp.	Range
S 1/4	35	95	13
SW-SE-SE	35	95	13

Project Number: 2007-033
 FB: Chickasaw County 1, Pgs. 13-20

File: D:\My Projects\2007\2007-033\dwg\2007-031-032-033.dwg, 5/15/2007 6:35:39 PM