

Section 35-95-13  
 As referred to in  
 Engr. Tie Book

TeKIPPE ENGINEERING, P.C., 128 South Vine Street, West Union, Iowa 52175 Phone (319) 422-6131

UNITED STATES PUBLIC LAND SURVEY CORNER CERTIFICATE

OF

Land Survey Monuments situated in Section 2, Township 94 North, Range 13 West, of the Fifth Principal Meridian, CHICKASAW County, Iowa. Previously recorded in NONE in County Recorder's Office.

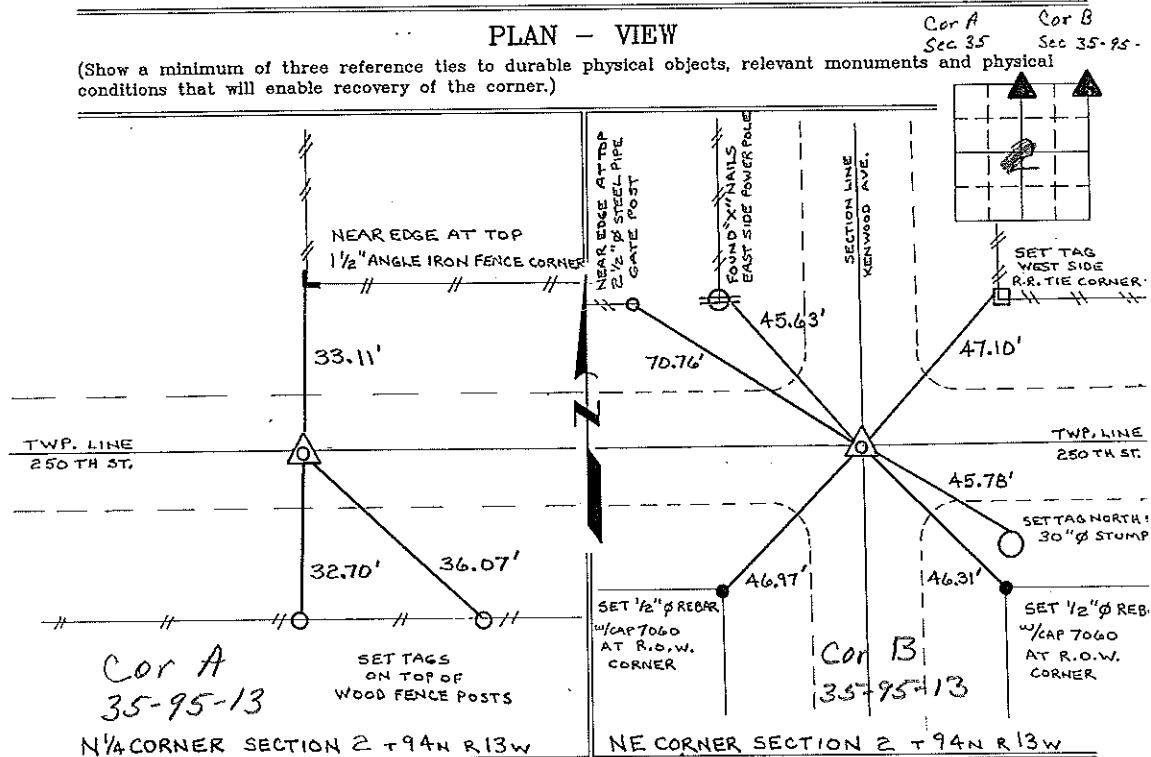
(Show reason for preparing this certificate, the evidence and detailed procedures used in establishing the corner positions and monumentation found or placed.)

Monument Description and Remarks: N 1/4 CORNER SECTION 2 T 94 N R 13 W: FOUND 80 d. NAIL, FROM INFORMATION OBTAINED FROM THE COUNTY ENGINEER'S OFFICE, IN FIELD BOOK "DAYTON TWP. CORNER TIES".

NE CORNER SECTION 2 T 94 N R 13 W: FOUND 5/8" φ REBAR, FROM INFORMATION OBTAINED FROM THE COUNTY ENGINEER'S OFFICE, IN FIELD BOOK "DAYTON TWP. CORNER TIES".

PLAN - VIEW

(Show a minimum of three reference ties to durable physical objects, relevant monuments and physical conditions that will enable recovery of the corner.)



I hereby certify that the survey work was completed and this certificate was prepared by me or under my direct personal supervision and that I am a duly registered land surveyor under the laws of the state of Iowa.

Signature: Lyle G. TeKippe  
 Lyle G. TeKippe

Date: 11-1-96 Reg. No. 7080  
 My Registration Renewal Date is December 31, 1998

Seal



Corners	Section	Twp.	Range
N 1/4	2	94 N	13 W
Cor A	35	95-13	
NE	2	94 N	13 W
Cor B	35-95-13		

*Placed in tie book 11/2/96 JPM*