

FILED 2005 - 0175
 RECORDER'S OFFICE
 CHICKASAW COUNTY, IOWA
Fee \$700
 2005 JAN 28 AM 8 39

CINDY MESSERSMITH
 COUNTY RECORDER

Prepared by: Erdman Engineering, P.C., 708 Commerce Drive, P.O. Box 246, Decorah, Iowa 52101 (563) 382-4194

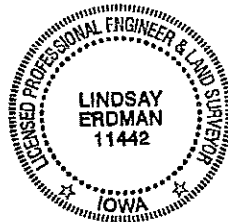
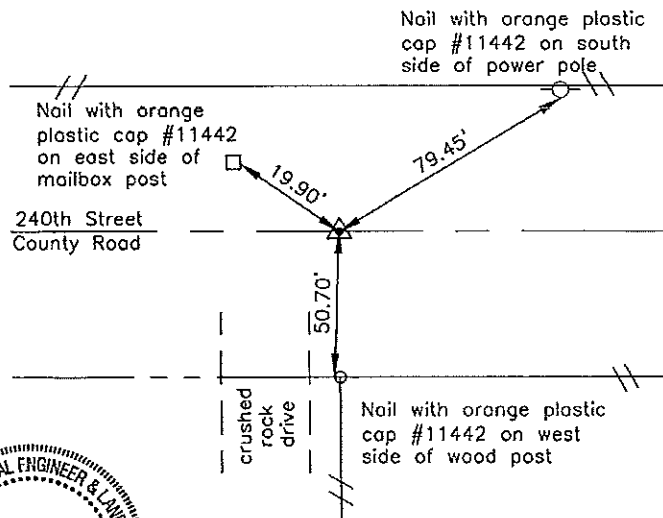
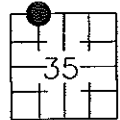
United States Public Land Survey Corner Certificate
 of

Land Survey Monuments situated in Section 35, Township 95, Range 13 West of the 5th Principal Meridian in Chickasaw County, Iowa. Previously recorded in does not apply in the county Recorder's Office.

Monument Description and Remarks: This certificate is prepared in accordance with Section 19.3C of the Code of Iowa. No previous certificate has been filed for this corner location. We found no record of the NNW 1/8 Corner being set. We found no evidence of a monument in the field other than the county road and an existing fence line running south. We found the NW Corner and the N 1/4 Corner. From these monuments we set a 1/2" diameter steel bar with 1 1/2" aluminum cap #11442 on line and equidistant between the NW Corner and the N 1/4 Corner as the NNW 1/8 Corner of Section 35, Township 95 North, Range 13 West. The monument is located at the approximate centerline of the county road and in line with the fence line running south.

Plan-View

E'



Cor. E.

I hereby certify that the survey work was completed and this certificate was prepared by me or under my direct supervision and that I am a duly registered land surveyor under the laws of the State of Iowa.

Signature: *Lindsay Erdman*
 Lindsay Erdman, P.E. and P.L.S. Iowa License Number 11442

Date: 1/27/05

My license renewal date is December 31, 2008

Corner(s) to be Indexed

Corner	Section	Township	Range
NNW 1/8	35	95	13