

Herold - Reicks Surveying, 19 East Main Street, New Hampton, IA 50659, Ph. 641-394-2725, Fax. 641-394-2719

UNITED STATES PUBLIC LAND SURVEY CORNER CERTIFICATE

Land Survey Monuments situated in Section 26, Township 95 North, Range 13 West of the Fifth Principal Meridian, Chickasaw County, Iowa. Previously recorded in Bk. 158, Pg. 474 in the County Recorder's office.

This certificate is being prepared in compliance with Iowa Code Chapter 355.11 because:



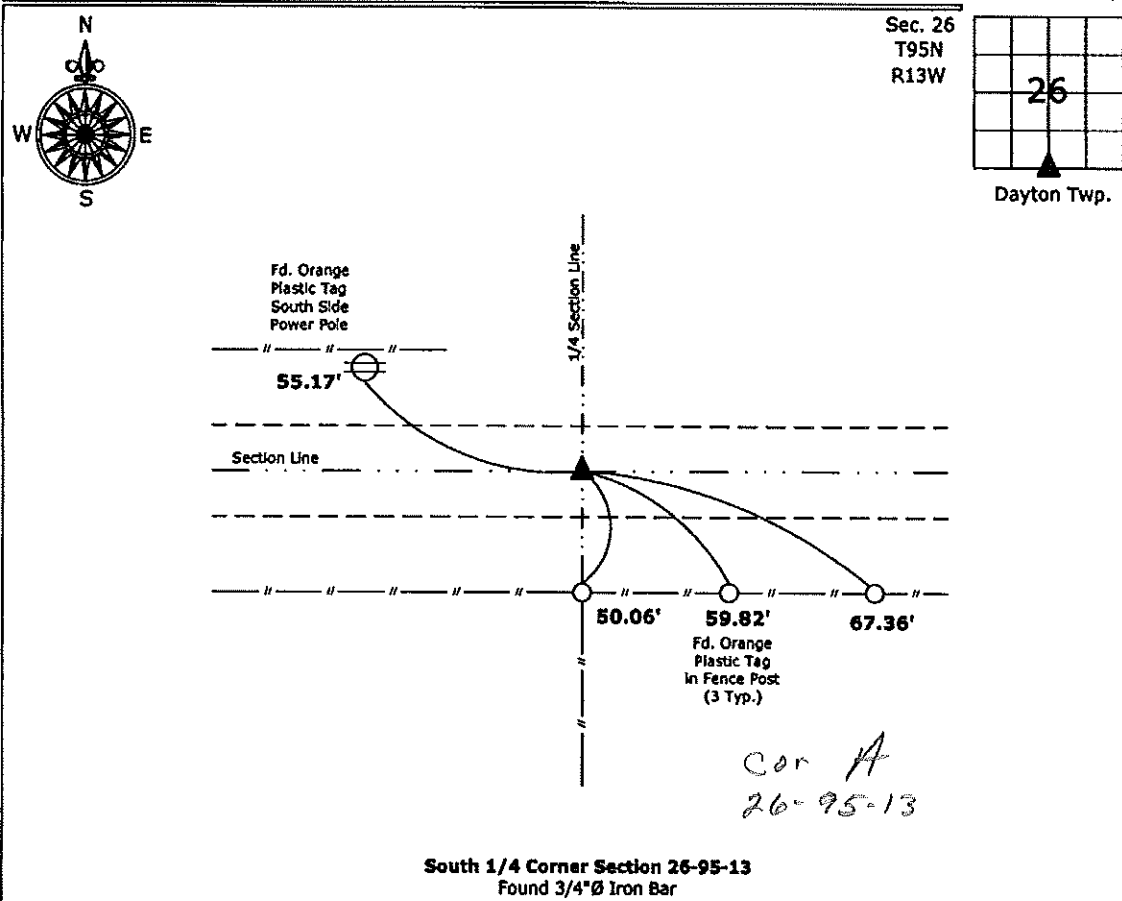
- There is no certificate on file for this corner.
- There are no longer three valid ties of record.
- There are changes to reference ties of record.
- There is change of monumentation of record.
- To clarify description of record monument (ties).

Monument Description and Remarks:

South 1/4 Corner: Corner was located with information obtained from a previous Section Corner Certificate. After further inspection the monument was determined to be a 3/4"Ø Iron bar rather than a 1" square iron pin as described in the previous Section Corner Certificate.

PLAN - VIEW

(Show a minimum of three reference ties to durable physical objects, relevant monuments and physical conditions that will enable recovery of the corner.)



South 1/4 Corner Section 26-95-13
 Found 3/4"Ø Iron Bar



I hereby certify that this land surveying document was prepared and the related survey work was performed by me or under my direct personal supervision and that I am a duly licensed Land Surveyor under the laws of the State of Iowa.

Paul R. Herold 3-30-10
 Paul R. Herold Date:
 License number 15525
 My license renewal date is December 31, 2010.
 Sheets covered by this seal: Individual sheet only

List Corners to be Indexed			
Corners	Section	Twp.	Range
S 1/4	26	95	13

Project Number: 2010-026

FB: Chickasaw County 2, Pgs. 35-38

Section 26-95-13
 As referred to in
 Engr. Tie Book

UNITED STATES PUBLIC LAND SURVEY CORNER CERTIFICATE

OF

Land Survey Monuments situated in Section 35, Township 95 North, Range 13 West, of the Fifth Principal Meridian, CHICKASAW County, Iowa. Previously recorded in NONE in County Recorder's Office.
(book page, document number, etc.)

(Show reason for preparing this certificate, the evidence and detailed procedures used in establishing the corner positions and monumentation found or placed.)

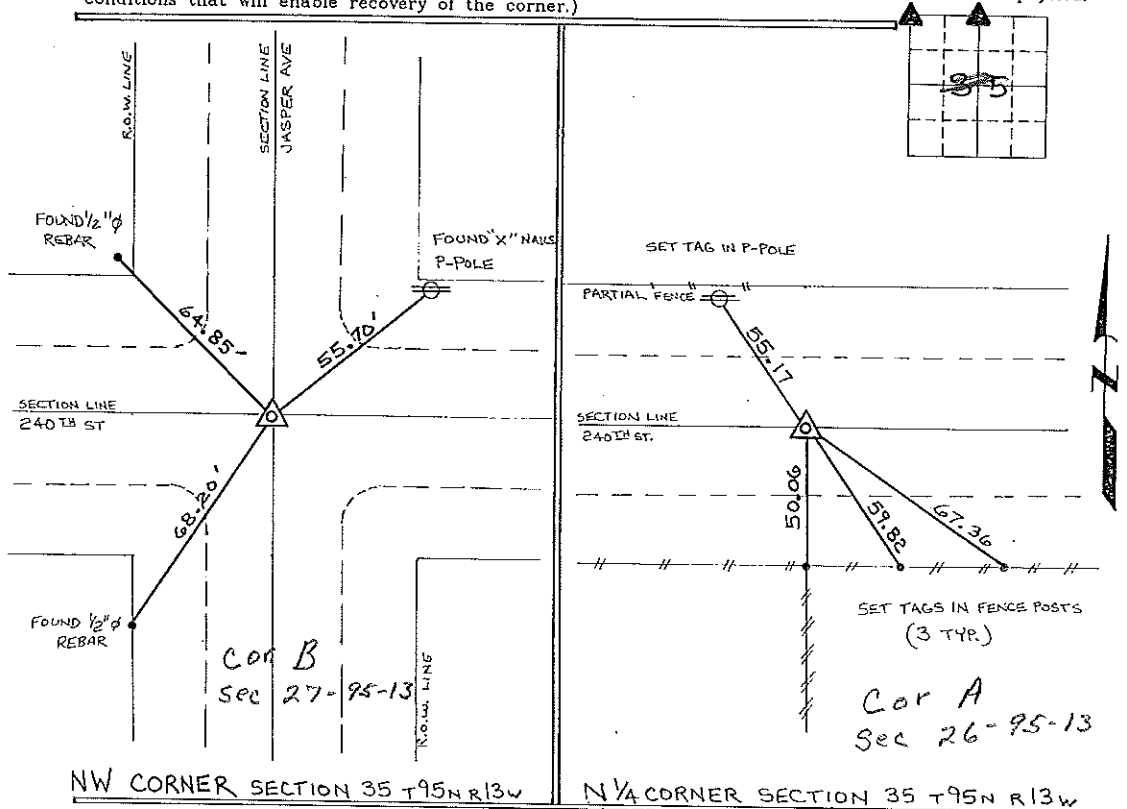
Monument Description and Remarks: NW CORNER SECTION 35 T95N R13W: SET 1/2" Ø REBAR w/CAP 7060 FROM TIES OBTAINED FROM COUNTY ENGINEERS OFFICE.

N 1/4 CORNER SECTION 35 T95N R13W: FOUND 1" SQR IRON BAR 0.3 DEEP

PLAN - VIEW

Cor B Sec 27
 Cor A Sec 26

(Show a minimum of three reference ties to durable physical objects, relevant monuments and physical conditions that will enable recovery of the corner.)



NW CORNER SECTION 35 T95N R13W

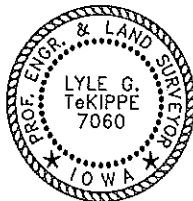
N 1/4 CORNER SECTION 35 T95N R13W

I hereby certify that the survey work was completed and this certificate was prepared by me or under my direct personal supervision and that I am a duly registered land surveyor under the laws of the state of Iowa.

Signature: Lyle G. TeKippe
 Lyle G. TeKippe

Date: 8-22-95 Reg. No. 7060
 My Registration Renewal Date is December 31, 1996

Seal



Corners	Section	Twp.	Range
NW	35	95N	13W
B	27-95-13		
N 1/4	35	95N	13W
A	26-95-13		

Placed in tie book
 9/15/95