

Herold - Recks Surveying, 10 East Main Street, New Hampton, IA 50659, Ph. 641-394-2725, Fax. 641-394-2718

UNITED STATES PUBLIC LAND SURVEY CORNER CERTIFICATE

Land Survey Monuments situated in Section 25, Township 95 North, Range 13 West of the Fifth Principal Meridian, Chickasaw County, Iowa. 1.) Previously recorded in Bk. 153, Pg. 126 In the County Recorder's office, 2.) Previously not recorded in the County Recorder's office.

This certificate is being prepared in compliance with Iowa Code Chapter 355.11 because:



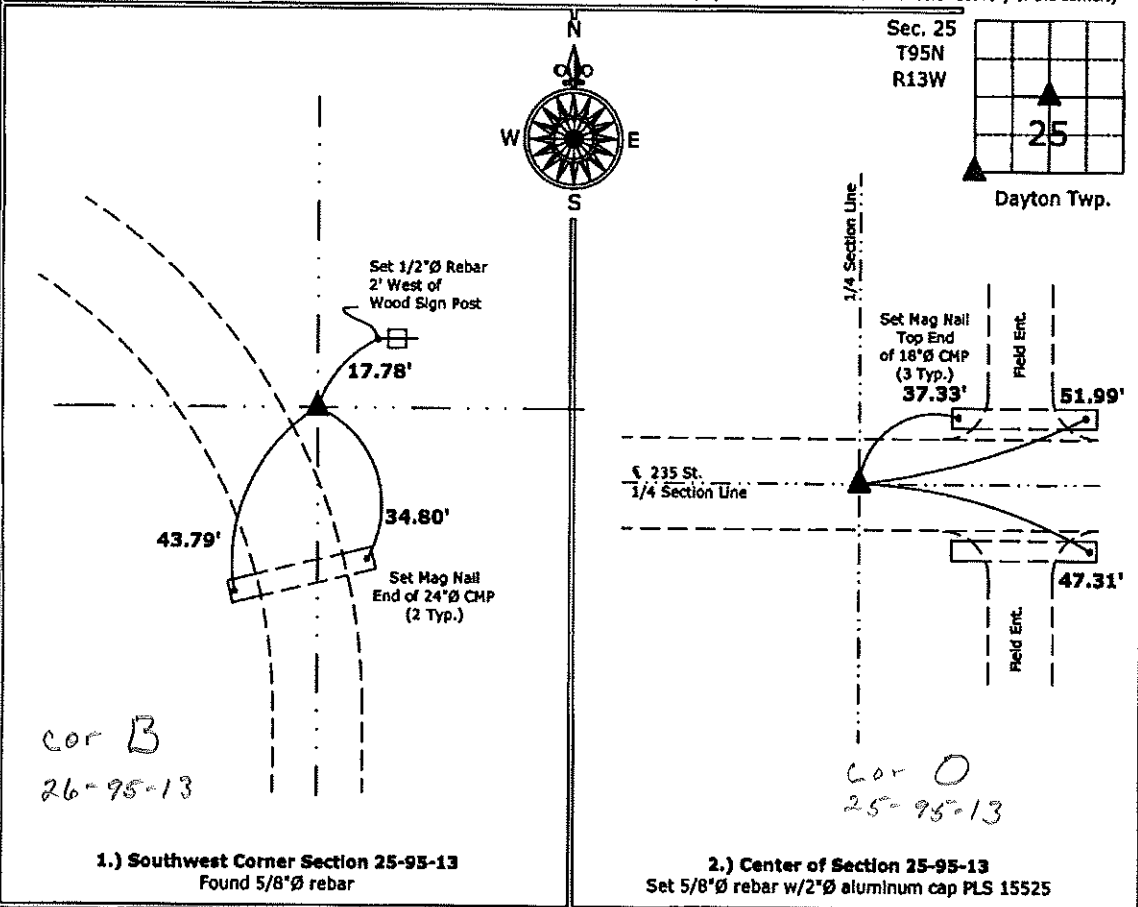
- 2.) There is no certificate on file for this corner.
- There are no longer three valid ties of record.
- 1.) There are changes to reference ties of record.
- There is change of monumentation of record.
- To clarify description of record monument (ties).

Monument Description and Remarks:

- 1.) **Southwest Corner:** Found 5/8"Ø rebar from information obtained from the previous Section Corner Certificate, the culvert was replaced and all of the previous ties were missing.
- 2.) **Center of Section:** Set 5/8"Ø rebar w/2"Ø aluminum cap PLS 15525 at the intersection of the Quarter Section Lines.

PLAN - VIEW

(Show a minimum of three reference ties to durable physical objects, relevant monuments and physical conditions that will enable recovery of the corner.)



1.) Southwest Corner Section 25-95-13
 Found 5/8"Ø rebar

2.) Center of Section 25-95-13
 Set 5/8"Ø rebar w/2"Ø aluminum cap PLS 15525



I hereby certify that this land surveying document was prepared and the related survey work was performed by me or under my direct personal supervision and that I am a duly licensed Land Surveyor under the laws of the State of Iowa.

Paul R. Herold 3-30-10
 Paul R. Herold Date:

License number 15525
 My license renewal date is December 31, 2010.
 Sheets covered by this seal: Individual sheet only

List Corners to be Indexed			
Corners	Section	Twp.	Range
SW	25	95	13
CTR	25	95	13

Project Number: 2010-026
 FB: Chickasaw County 2, Pgs. 35-38

Section 26-95-13
As referred to in
Engr. Tie Book

SLSI 9-90

UNITED STATES PUBLIC LAND SURVEY CORNER CERTIFICATE

OF

Land Survey Monuments situated in Section 36 2/6, Township 95 NORTH, Range 13 WEST, of the Fifth Principal Meridian, CHICKASAW County, Iowa.
Previously recorded in NONE in County Recorder's Office.

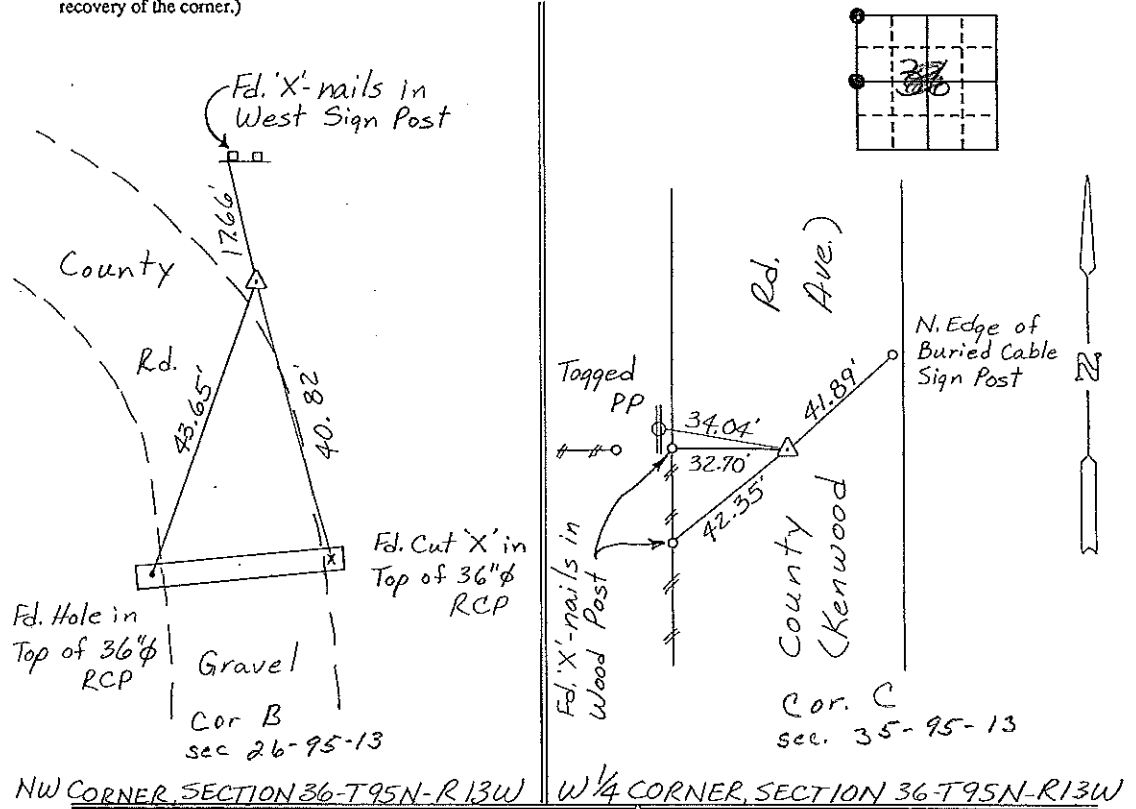
(Show reason for preparing this certificate, the evidence and detailed procedures used in establishing the corner positions and monumentation found or placed.)

Monument Description and Remarks: NW CORNER, SECTION 36-T95N-R13W:
Found 5/8" ϕ Iron Pin.

W 1/4 CORNER, SECTION 36-T95N-R13W: Found 3/4" ϕ Rebar.

PLAN - VIEW

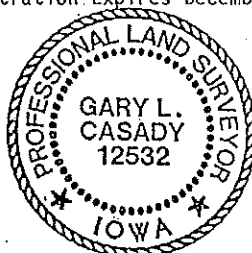
(Show a minimum of three reference ties to durable physical objects, relevant monuments and physical conditions that will enable recovery of the corner.)



I hereby certify that the survey work was completed and this certificate was prepared by me or under my direct personal supervision and that I am a duly registered land surveyor under the laws of the state of Iowa.

Signature: Gary L. Casady
Name typed or printed: Gary L. Casady
Date: 10-5-93 Reg. No. 12532
My Registration Expires December 31, 1994

Corners	List Corners to be Indexed	Section	Twp	Range
NW	Cor B	36	95N	13W
W 1/4	Cor C	36	95N	13W
			35	95-13



SEAL

Placed in the Book
10/8/93
JPM