

Chickasaw Co. Recorder
 Cindy Messersmith
Fee Book 2009-1162
 06/08/2009 @11:09AM
 SCC SEC COR CERT
 Book: Page: # Pages: 1
 Total Fees: \$7.00

Herold - Reicks Surveying, 25 1/2 East Main Street, Suite 204, New Hampton, IA 50659, Ph. 641-994-2725

UNITED STATES PUBLIC LAND SURVEY CORNER CERTIFICATE

Land Survey Monuments situated in Section 36, Township 95 North, Range 13 West of the Fifth Principal Meridian, Chickasaw County, Iowa. Previously not recorded in the County Recorder's office.

This certificate is being prepared in compliance with Iowa Code Chapter 355.11 because:

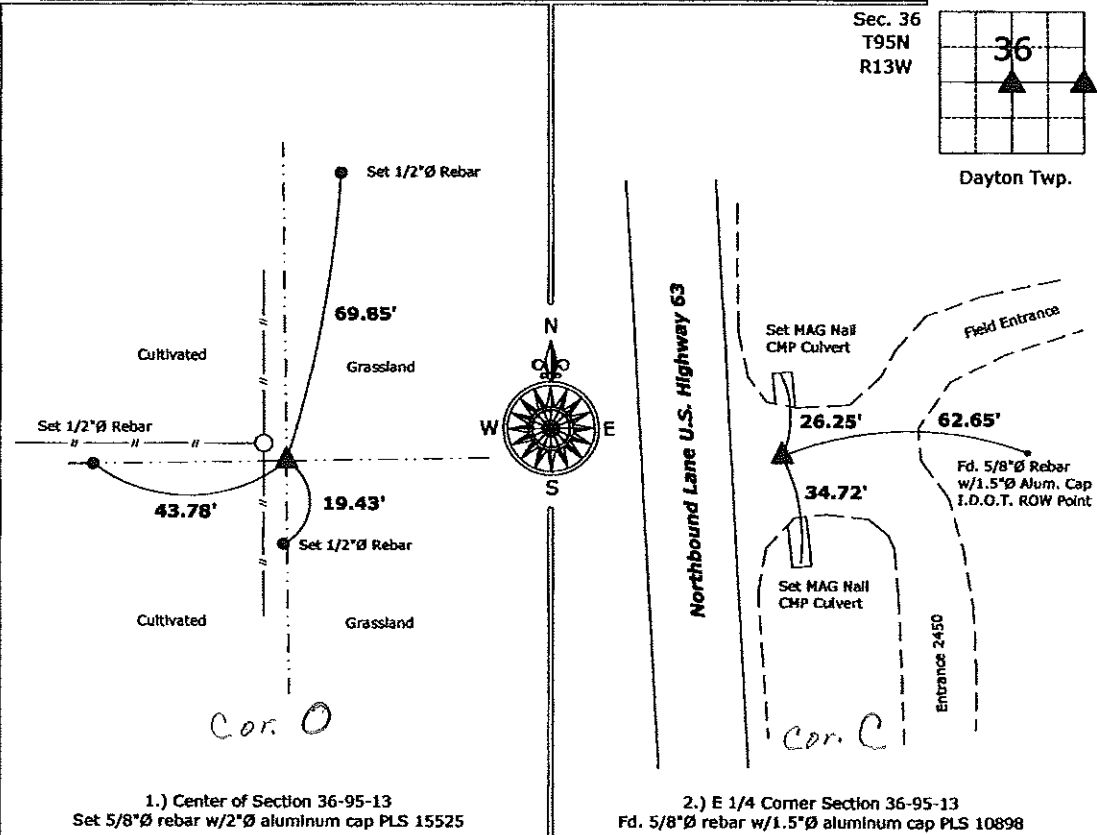
- 1.) 2.) There is no certificate on file for this corner.
 There are no longer three valid ties of record.
 There are changes to reference ties of record.
 There is change of monumentation of record.
 To clarify description of record monument (ties).

Monument Description and Remarks:

- Center of Section:** Set 5/8"Ø rebar w/2"Ø aluminum cap PLS 15525 at the intersection of the Quarter Section Lines.
- E 1/4 Corner:** Fd. 5/8"Ø rebar w/1.5"Ø aluminum cap PLS 10898 from information obtained from the Iowa Department of Transportation.

PLAN - VIEW

(Show a minimum of three reference ties to durable physical objects, relevant monuments and physical conditions that will enable recovery of the corner.)



1.) Center of Section 36-95-13
 Set 5/8"Ø rebar w/2"Ø aluminum cap PLS 15525

2.) E 1/4 Corner Section 36-95-13
 Fd. 5/8"Ø rebar w/1.5"Ø aluminum cap PLS 10898



I hereby certify that this land surveying document was prepared and the related survey work was performed by me or under my direct personal supervision and that I am a duly licensed Land Surveyor under the laws of the State of Iowa.

Paul R. Herold 6-5-09
 Paul R. Herold Date:
 License number 15525
 My license renewal date is December 31, 2010.
 Sheets covered by this seal: Individual sheet only

List Corners to be Indexed			
Corners	Section	Twp.	Range
Center	36	95	13
E 1/4	36	95	13

Project Number: 2009-063
 FB: Chickasaw County 3, Pgs. 34-35

File: S:\Projects\New Hampton.dwg, 6/5/2009 03:51:52