

Section 36-95-13  
 As referred to in  
 Engr. Tie Book

2007-0224

Herold - Reicks Surveying, 25 1/2 East Main Street, Suite 204, New Hampton, IA 50659, Ph. 641-394-2725

UNITED STATES PUBLIC LAND SURVEY CORNER CERTIFICATE

Land Survey Monuments situated in Section 1, Township 94 North, Range 13 West of the Fifth Principal Meridian, Chickasaw County, Iowa. Previously recorded in (1) Bk. 150, Pg. 109 (2) N/A in County Recorder's Office.  
(book, page, document number, etc.)

(Show reason for preparing this certificate, the evidence and detailed procedures used in establishing the corner positions and monumentation found or placed.)

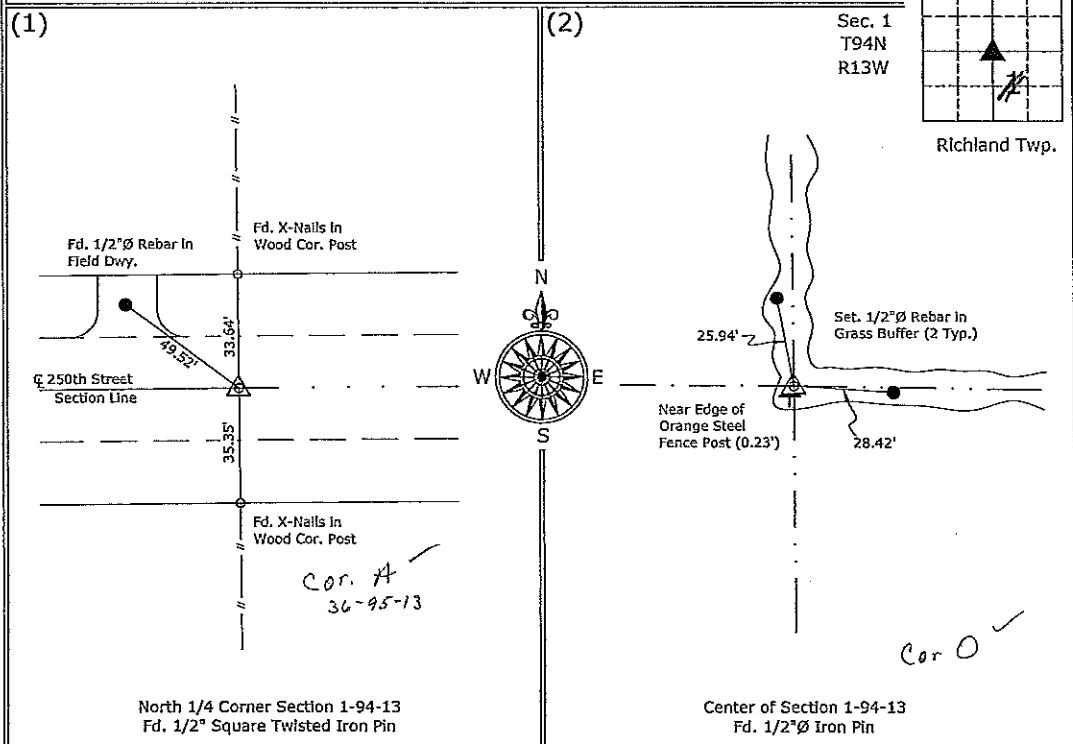
Monument Description and Remarks:

North 1/4 Corner - Found 1/2" square twisted iron pin from previous corner ties. Previous certificate called monument as 1/2"Ø rebar.

Center - Found 1/2"Ø iron pin next to lone orange steel fence post at corner of field division lines. Matches field evidence reported by IDOT field crews. Information on file at IDOT, Mason City, Iowa.

PLAN - VIEW

(Show a minimum of three reference ties to durable physical objects, relevant monuments and physical conditions that will enable recovery of the corner.)



I hereby certify that this land surveying document was prepared and the related survey work was performed by me or under my direct personal supervision and that I am a duly licensed Land Surveyor under the laws of the State of Iowa.

*Paul R. Herold* 1-30-07  
 Paul R. Herold Date:  
 License number 15525  
 My license renewal date is December 31, 2008.  
 Sheets covered by this seal: Sheet P1

List Corners to be Indexed			
Corners	Section	Twp.	Range
N 1/4	1	94	13
Center	1	94	13

S:\ Projects\2007\2007-002\dwg\2007-002.dwg  
 Project Number:2007-002  
 FB: Chickasaw County 1, Pg. 1

Section 36-96-13  
As referred to in  
Engr. Tie Book

TeKIPPE ENGINEERING, P.C., 128 South Vine Street, West Union, Iowa 52175 Phone (319) 422-5131

UNITED STATES PUBLIC LAND SURVEY CORNER CERTIFICATE

OF

Land Survey Monuments situated in Section 1, Township 95 North, Range 13 West of the Fifth Principal Meridian, CHICKASAW County, Iowa. Previously recorded in none in County Recorder's Office.

(book, page, document number, etc.)

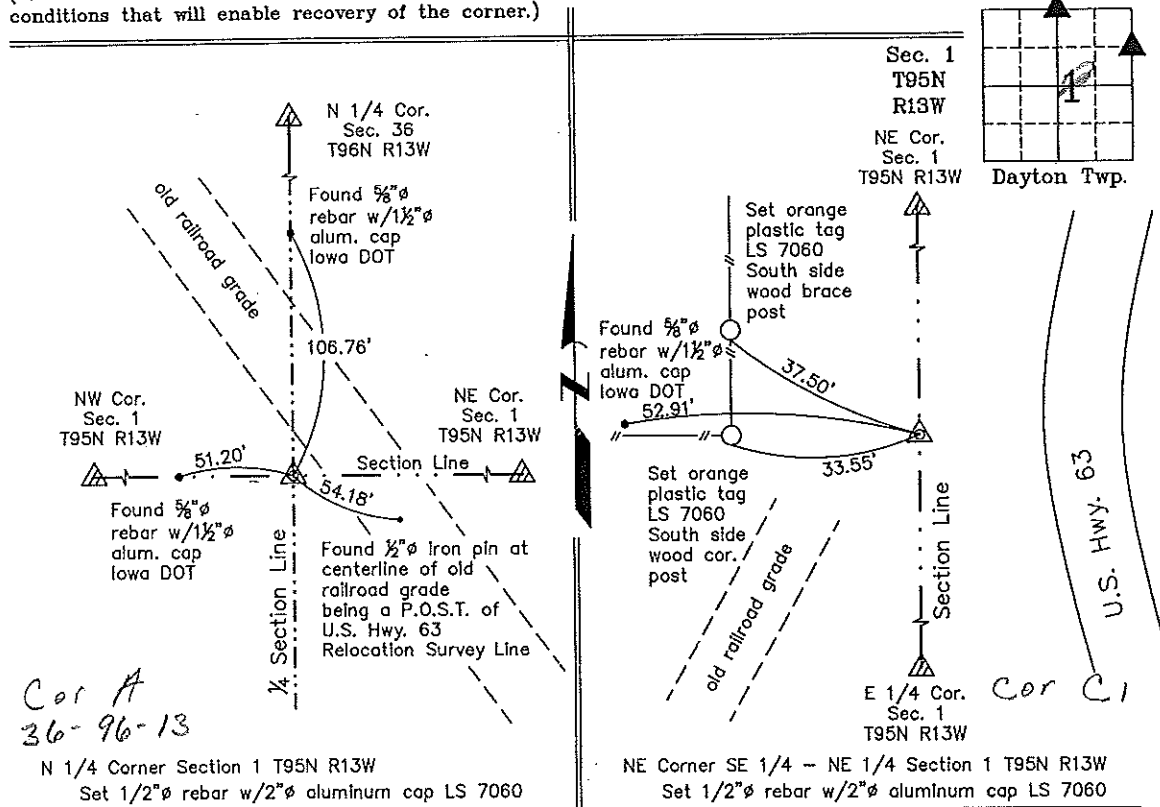
(Show reason for preparing this certificate, the evidence and detailed procedures used in establishing the corner positions and monumentation found or placed.)

Monument Description and Remarks: N 1/4 Corner Section 1 T95N R13W: Set 1/2"Ø rebar w/2"Ø aluminum cap IS 7060 by extending a line from the NW Corner through a found 5/8"Ø rebar w/1-1/2"Ø aluminum Iowa DOT cap and intersecting a line extended from the N 1/4 Corner Section 36 T96N R13W through a found 5/8"Ø rebar w/1-1/2"Ø aluminum Iowa DOT cap. NE Corner SE 1/4 - NE 1/4 Section 1 T95N R13W: Set 1/2"Ø rebar w/2"Ø aluminum cap LS 7060 by extending a line through two found monuments on the 1/4-1/4 Section Line and intersecting the Section Line between the NE Corner and the E 1/4 Corner.

PLAN - VIEW

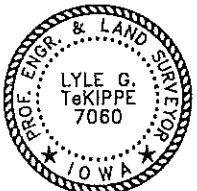
Project Number 00045.15  
FR. 46H PG. 1-3

(Show a minimum of three reference ties to durable physical objects, relevant monuments and physical conditions that will enable recovery of the corner.)



Cor A  
36-96-13

Cor C



I hereby certify that this land surveying document was prepared and the related survey work was performed by me or under my direct personal supervision and that I am a duly licensed Land Surveyor under the laws of the State of Iowa.

*Lyle G. TeKippe* 2-16-01  
Lyle G. TeKippe Date  
License number 7060  
My license renewal date is December 31, 2000.  
Sheets covered by this seal: Individual

List Corners to be Indexed			
Corners	Section	Twp.	Range
N 1/4	1	95N	13W
Cor A	Sec 36	Washington Twp.	
NE-SE-NE	1	95N	13W
Cor C			
Put in tie book 3-17-01			

County Engineer's  
Copies

Section 36-95-13  
As referred to in  
Engr. T.C. Book

SLSI 9-90

UNITED STATES PUBLIC LAND SURVEY CORNER CERTIFICATE

OF

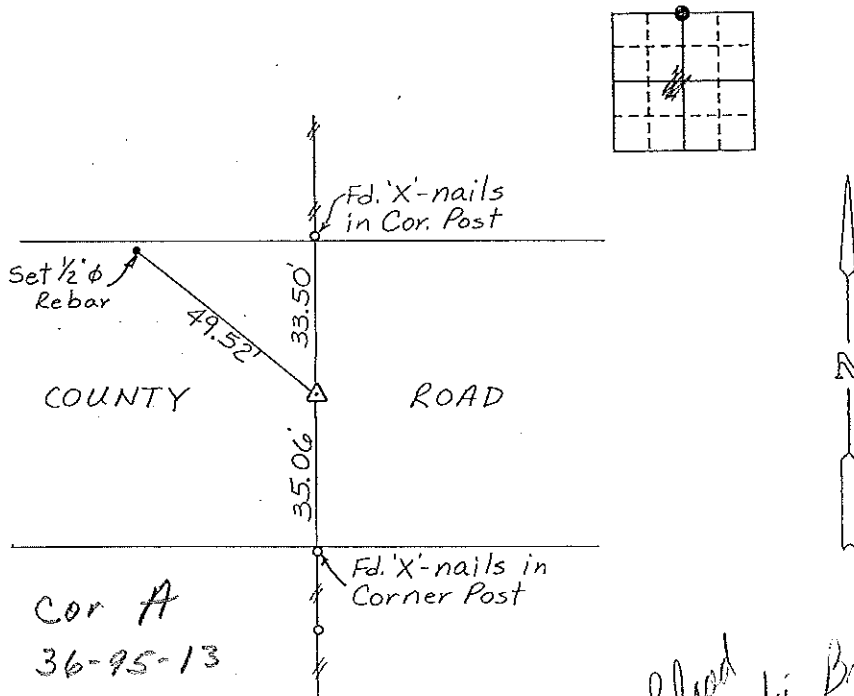
Land Survey Monuments situated in Section 1, Township 94 N, Range 13 W, of the Fifth Principal Meridian, CHICKASAW County, Iowa.  
Previously recorded in (NONE) in County Recorder's Office.

(Show reason for preparing this certificate, the evidence and detailed procedures used in establishing the corner positions and monumentation found or placed.)

Monument Description and Remarks: N 1/4 CORNER, SECTION 1-T94N-R13W:  
FOUND 1/2" REBAR

PLAN - VIEW

(Show a minimum of three reference ties to durable physical objects, relevant monuments and physical conditions that will enable recovery of the corner.)



Cor A  
36-95-13

Plead in the Book  
8/92

N 1/4 CORNER, SECTION 1-T94N-R13W

I hereby certify that the survey work was completed and this certificate was prepared by me or under my direct personal supervision and that I am a duly registered land surveyor under the laws of the state of Iowa.

Signature: Lyle G. Tekippe  
Name typed or printed: Lyle G. Tekippe  
Date: 8-3-92 Reg. No. 7060

Corners	List Corners to be Indexed	Section	Twp	Range
N 1/4	1	94N	13W	

SEAL

