

Prepared by & Return to Harold - Reicks Surveying, 10 East Main Street, New Hampton, IA 50659, Ph. 641-394-2725

UNITED STATES PUBLIC LAND SURVEY CORNER CERTIFICATE

Land Survey Monuments situated in Section 1, Township 94 North, Range 13 West of the Fifth Principal Meridian, Chickasaw County, Iowa. Previously recorded in Document #2000-1170 in the County Recorder's office.

This certificate is being prepared in compliance with Iowa Code Chapter 355.11 because:

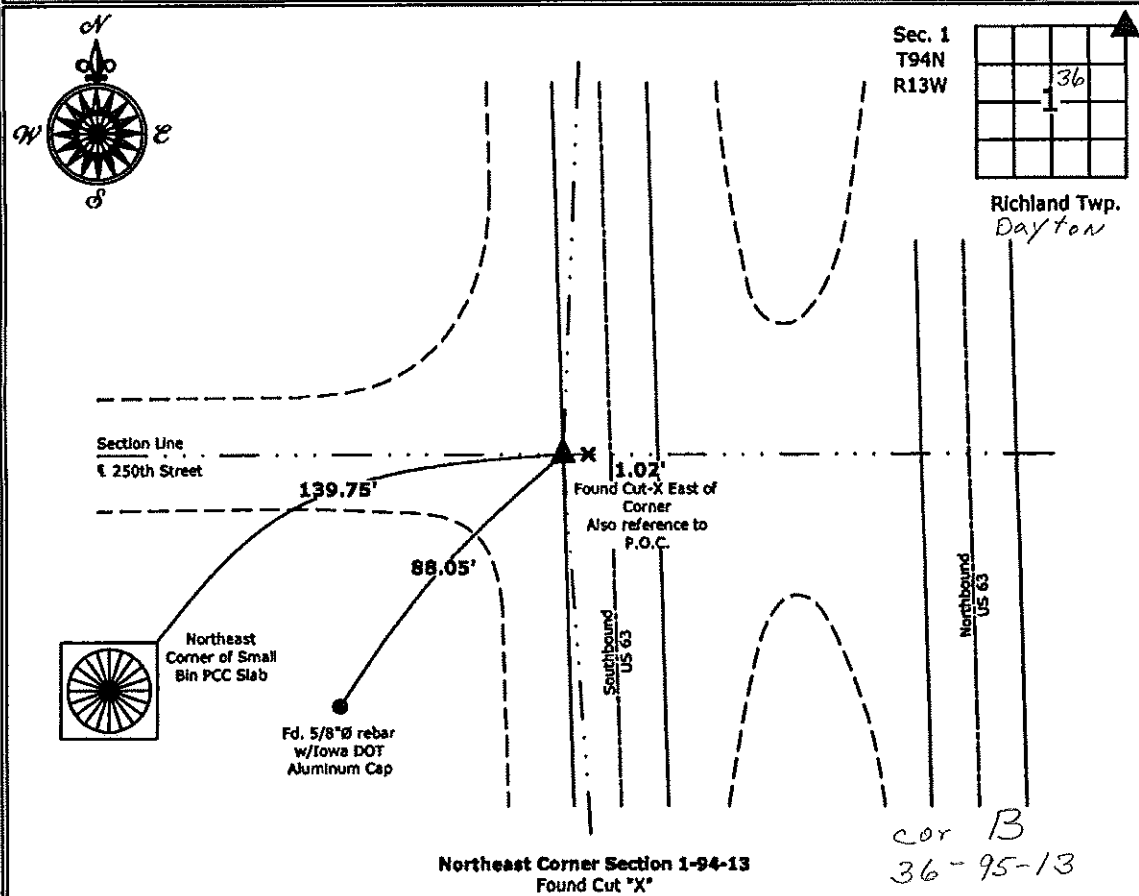
- There is no certificate on file for this corner.
- There are no longer three valid ties of record.
- There are changes to reference ties of record.
- There is change of monumentation of record.
- To clarify description of record monument (ties).

Monument Description and Remarks:

Northeast Corner: Found Cut "X" (Notch) at PCC edge with information obtained from the previous Section Corner Certificate. An additional Cut "X" was located 1.02' East of said Section Corner. This Cut "X" also serves as a reference to a P.O.C. on US Highway #63. This reference was also verified as such by the IDOT Resident Construction Engineer's office, New Hampton, Iowa.

PLAN - VIEW

(Show a minimum of three reference ties to durable physical objects, relevant monuments and physical conditions that will enable recovery of the corner.)



I hereby certify that this land surveying document was prepared and the related survey work was performed by me or under my direct personal supervision and that I am a duly licensed Land Surveyor under the laws of the State of Iowa.

Kirk D. Reicks 2-13-13
 Kirk D. Reicks Date:

License number 19211
 My license renewal date is December 31, 2014.
 Sheets covered by this seal: Individual sheet only

List Corners to be Indexed			
Corners	Section	Twp.	Range
NE	1	94	13

Project Number: 2013-027

FB: Chickasaw, Pg. 27

Section 36-95-13
As referred to in
Engr. Tie Book

TeKIPPE ENGINEERING, P.C., 128 South Vine Street, West Union, Iowa 52175 Phone (319) 422-5131

UNITED STATES PUBLIC LAND SURVEY CORNER CERTIFICATE

OF 36 95
Land Survey Monuments situated in Section 1, Township 94 North, Range 13 West of the Fifth Principal Meridian, CHICKASAW County, Iowa.
Previously recorded in (1) none, (2) Book 150, Page 111 in County Recorder's Office.
(book, page, document number, etc.)

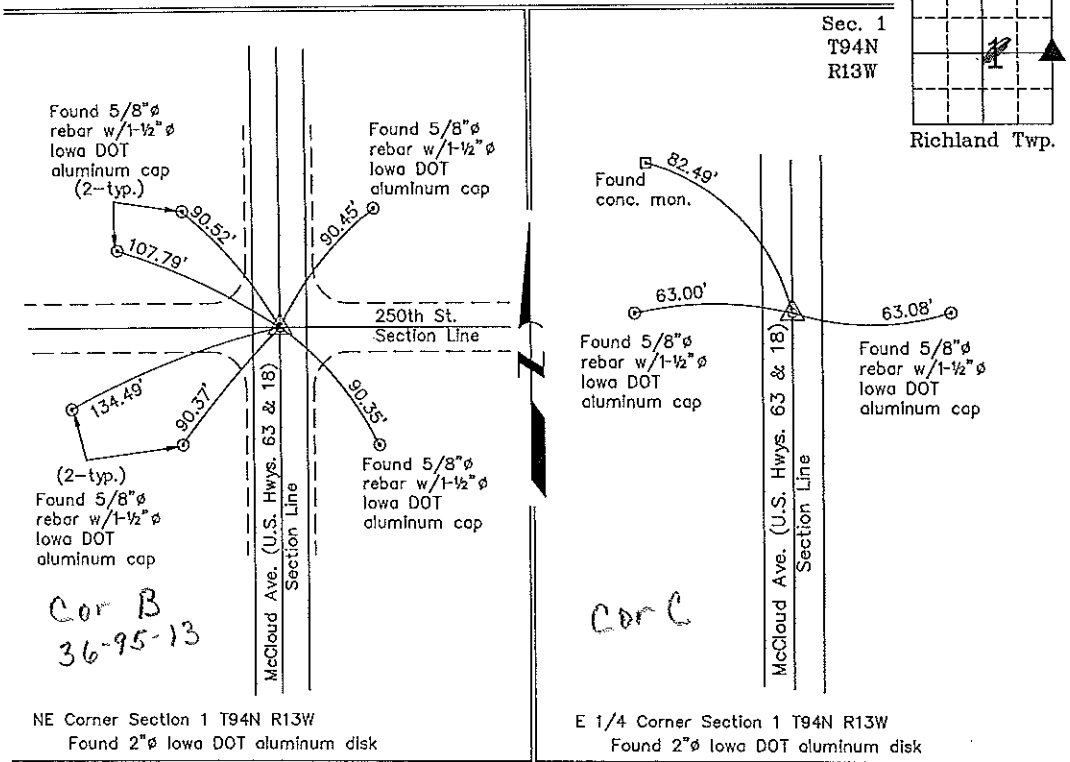
(Show reason for preparing this certificate, the evidence and detailed procedures used in establishing the corner positions and monumentation found or placed.)

Monument Description and Remarks: (1) NE Corner Section 1 T94N R13W: Found Iowa DOT 2" ϕ aluminum cap at intersection of centerline of U.S. Hwys. 63 & 18 (McCloud Ave.) and the centerline of County Road 250th St.
(2) E 1/4 Corner Section 1 T94N R13W: Found Iowa DOT 2" ϕ aluminum cap with information obtained from a Section Corner Certificate filed in the Chickasaw County Recorder's Office in Book 150, Page 111, on August 7, 1992. Fence indicated in the Certificate was removed so one tie was missing. An additional tie was found.

PLAN - VIEW

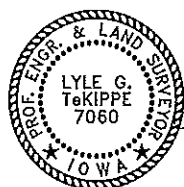
(Show a minimum of three reference ties to durable physical objects, relevant monuments and physical conditions that will enable recovery of the corner.)

Project Number 00120.15
FA 466 PG. 63-69 Day
B of 3



NE Corner Section 1 T94N R13W
Found 2" ϕ lowa DOT aluminum disk

E 1/4 Corner Section 1 T94N R13W
Found 2" ϕ lowa DOT aluminum disk



I hereby certify that this land surveying document was prepared and the related survey work was performed by me or under my direct personal supervision and that I am a duly licensed Land Surveyor under the laws of the State of Iowa.
Lyle G. TeKippe 7-7-00
Lyle G. TeKippe Date
License number 7060
My license renewal date is December 31, 2000.
Sheets covered by this seal: Individual

List Corners to be Indexed			
Corners	Section	Twp.	Range
NE	1	94N	13W
E 1/4	1	94N	13W
Entered 7-10-00			

2000-1130

County Engineer's Copy