

2003 NOV 14 AM 9 29

CINDY MESSERSMITH
 COUNTY RECORDER

TEKIPPE ENGINEERING, P.C., 128 South Vine Street, West Union, Iowa 52176 Phone (563) 422-6131

UNITED STATES PUBLIC LAND SURVEY CORNER CERTIFICATE

OF
 Land Survey Monuments situated in Section 25, Township 95 North, Range
13 West of the Fifth Principal Meridian, CHICKASAW County, Iowa.
 Previously recorded in none in County Recorder's Office.
 (book, page, document number, etc.)

(Show reason for preparing this certificate, the evidence and detailed procedures used in establishing the corner positions and monumentation found or placed.)

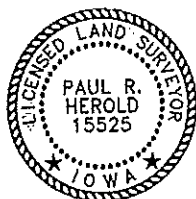
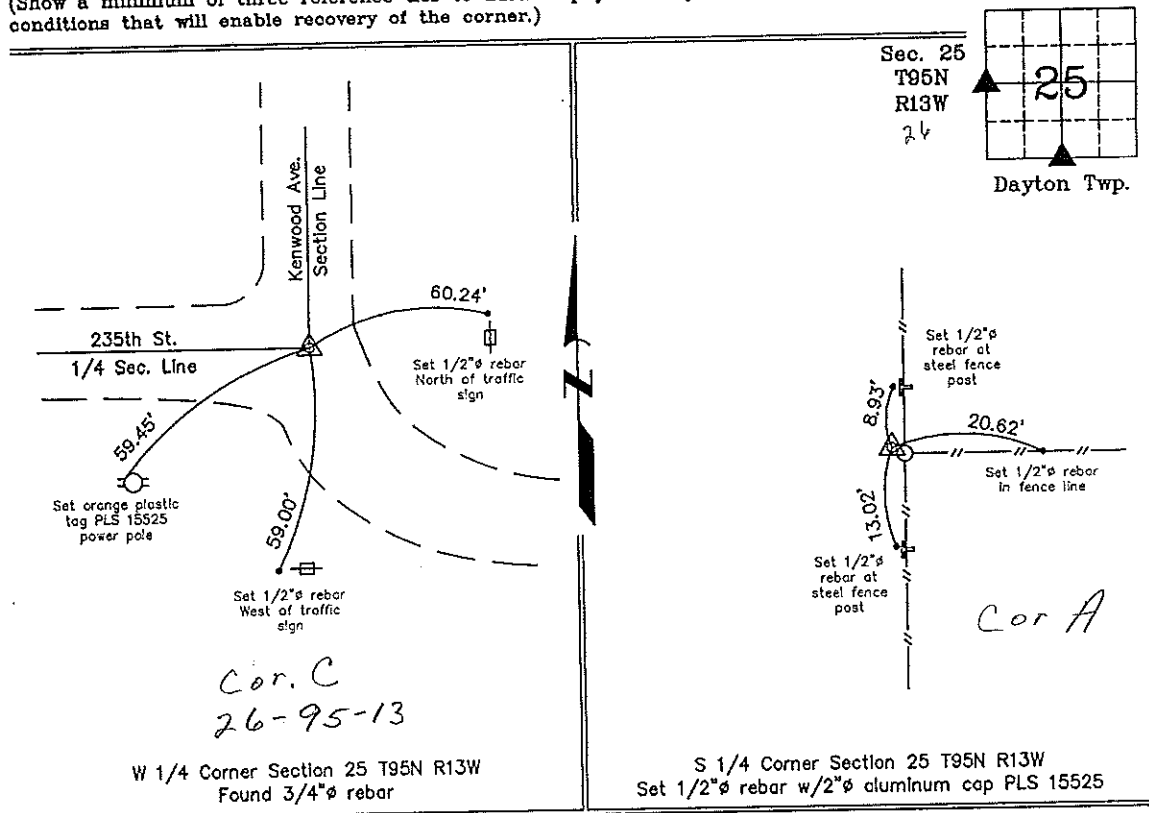
Monument Description and Remarks: W 1/4 Corner Section 25 T95N R13W: Found 3/4"Ø rebar with information obtained from the Chickasaw County Engineer's Office in Field Book Dayton Twp. Corner Ties, Corner 'C'.

S 1/4 Corner Section 25 T95N R13W: Set 1/2"Ø rebar w/2"Ø aluminum cap PLS 15525 by extending a line Easterly from the SE Corner through a Iowa D.O.T. ROW monument and intersecting a possession fence.

PLAN - VIEW

Project Number 03198.LS
 FB. 46K PG. 30-33

(Show a minimum of three reference ties to durable physical objects, relevant monuments and physical conditions that will enable recovery of the corner.)



I hereby certify that this land surveying document was prepared and the related survey work was performed by me or under my direct personal supervision and that I am a duly licensed Land Surveyor under the laws of the State of Iowa.

Paul R. Herold 11-12-03
 Paul R. Herold Date
 License number 15525
 My license renewal date is December 31, 2004.
 Sheets covered by this seal: Individual

List Corners to be Indexed			
Corners	Section	Twp.	Range
W 1/4	25	95N	13W
S 1/4	25	95N	13W

Filed 12-15-03

X:\Section Corners\Sec. 25\25-95-13kw.dwg