

Section 25-95-13
 AS referred to in
 Engr. Tie Book

FILED 2003 - 3499
 RECORDER'S OFFICE
 CHICKASAW COUNTY, IOWA
Fee \$11.00
 2003 NOV 14 AM 9 30
 CINDY MESSERSMITH
 COUNTY RECORDER

TeKIPPE ENGINEERING, P.C., 128 South Vine Street, West Union, Iowa 52176 Phone (563) 422-6131

UNITED STATES PUBLIC LAND SURVEY CORNER CERTIFICATE

OF 25
 Land Survey Monuments situated in Section 30, Township 95 North, Range
13 12 West of the Fifth Principal Meridian, CHICKASAW County, Iowa.
 Previously recorded in none in County Recorder's Office.
(book, page, document number, etc.)

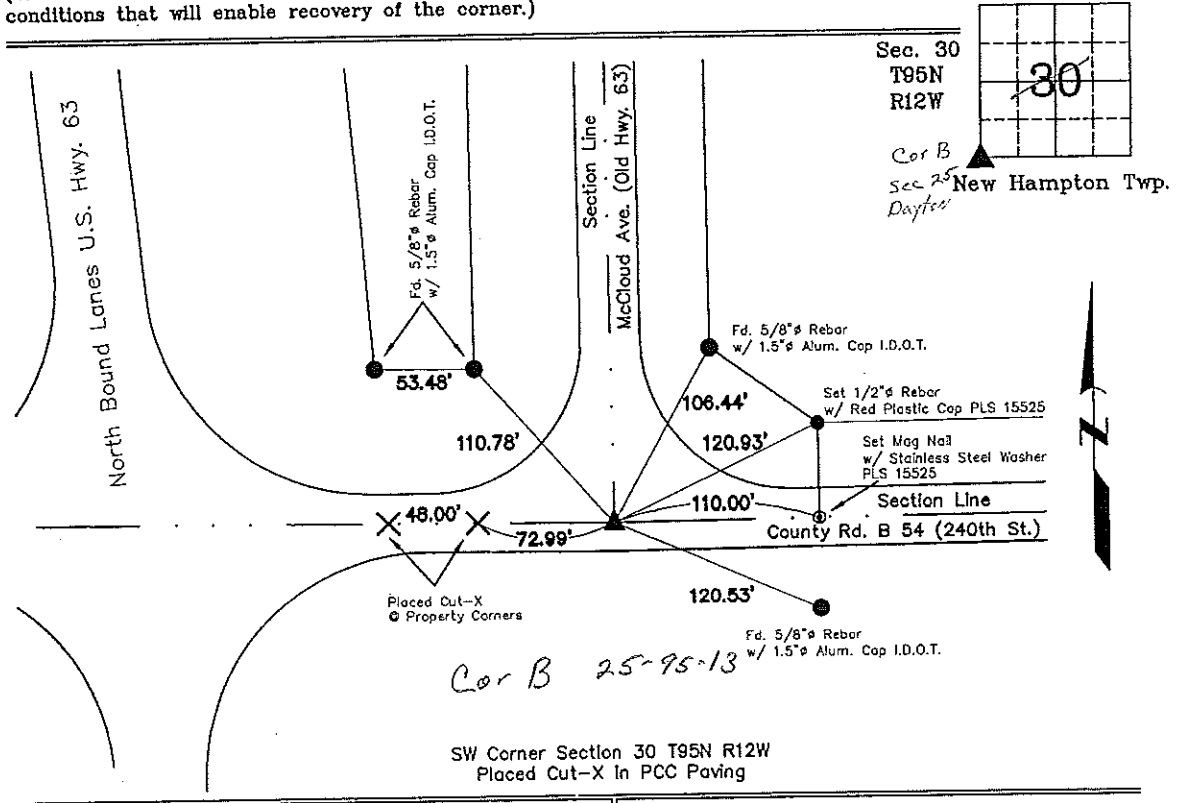
(Show reason for preparing this certificate, the evidence and detailed procedures used in establishing the corner positions and monumentation found or placed.)

Monument Description and Remarks: SW Corner Section 30 T95N R12W: Placed a Cut-X
in new PCC paving at the location of the previous monument (I.D.O.T. 3"Ø Alum.Mon.)
Position established prior to reconstruction of the intersection

PLAN - VIEW

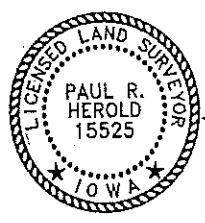
Project Number 03198.LS
 FB. 46K PG. 30-33

(Show a minimum of three reference ties to durable physical objects, relevant monuments and physical conditions that will enable recovery of the corner.)



Cor B 25-95-13

SW Corner Section 30 T95N R12W
 Placed Cut-X In PCC Paving



I hereby certify that this land surveying document was prepared and the related survey work was performed by me or under my direct personal supervision and that I am a duly licensed Land Surveyor under the laws of the State of Iowa.

Paul R. Herold 11-12-03
 Paul R. Herold Date
 License number 15525
 My license renewal date is December 31, 2002.
 Sheets covered by this seal: Individual

List Corners to be Indexed			
Corners	Section	Twp.	Range
SW	30	95N	12W

Filed 12-16-03

X:\Section Corners\Sec. 30\30-95-12u.dwg