

Instrument #: 2019-2023  
 12/23/2019 11:48:44 AM Total Pages: 1  
 SCC SECTION CORNER CERTIFICATES  
 Recording Fee: \$ 7.88  
 Shirley Troyna, Recorder, Chickasaw County Iowa

Prepared By and Return To: BENJAMIN V. STARK STARK SURVEYING INC., Mason City, Iowa, 50401 (641) 423-7947

## UNITED STATES PUBLIC LAND SURVEY CORNER CERTIFICATE OF

Land Survey Monuments situated in Section 3, Township 95N, Range 13W, of the 5th P.M, Chickasaw County, Iowa. Reason for Certificate Set 1 Monument.

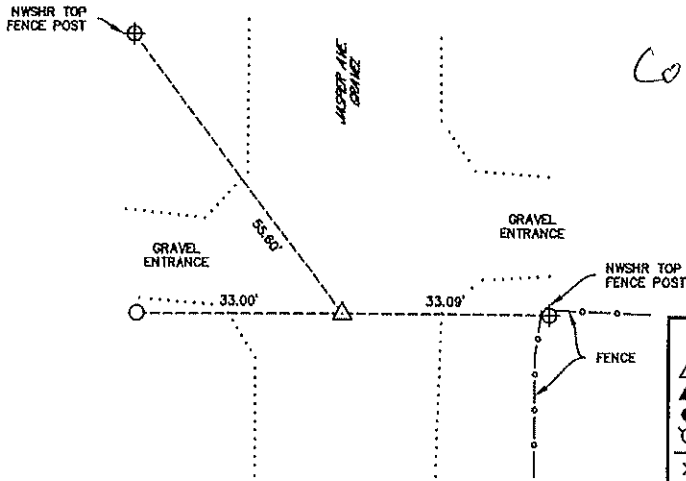
**Monument Description and Remarks:**

NE COR. SE 1/4 FRL. NE 1/4 SET A 1/2" REBAR W/ YPC23709 AT PROPORTIONATE MEASUREMENT ON-LINE BETWEEN THE E 1/4 COR. AND THE NE COR. OF S3-T95N-R13W.

### PLAN - VIEW

(Show a minimum of three reference ties to durable physical conditions that will enable recovery of the corner.)

NE COR. SE 1/4 FRL. NE 1/4  
 SEC. 3-T95N-R13W  
 SET 1/2" REBAR W/ YPC 23709



Cor C<sub>1</sub> - 3-95-13

**LEGEND**

- ▲ SECTION CORNER SET AS NOTED
- SECTION CORNER FOUND
- FOUND PROPERTY PIN AS NOTED
- POWER POLE
- EXISTING FENCELINE
- X FOUND "X" NAILS
- SET 1/2" REBAR WITH YPC 23709
- ⊕ TIE AS NOTED

NOT TO SCALE

I hereby certify that this Land Surveying document was prepared and the related survey work was performed by me or under my direct personal supervision and that I am a duly licensed Land Surveyor under the laws of the State of Iowa.

*Benjamin V. Stark* 12-15-19

Benjamin V. Stark  
 License Number 23709  
 My license renewal date is December 31, 2019

**STARK  
SURVEYING  
INC.**



PROJECT NO.: 19289  
 SHEET 1 OF 1

Seal

**LAND CORNER TO BE INDEXED**

Corners	Sections	Twp	Range
NE COR. SE 1/4 FRL. NE 1/4	3	95N	13W

