

Section 3-95-13
As referred to in
Engr. Trc Book

TEKIPPE ENGINEERING, P.C., 128 South Vine Street, West Union, Iowa 52175 Phone (319) 422-5131

UNITED STATES PUBLIC LAND SURVEY CORNER CERTIFICATE

OF

Land Survey Monuments situated in Section 2, Township 95 North, Range 13 West, of the Fifth Principal Meridian, CHICKASAW County, Iowa. Previously recorded in NONE in County Recorder's Office.

(book, page, document number, etc.)

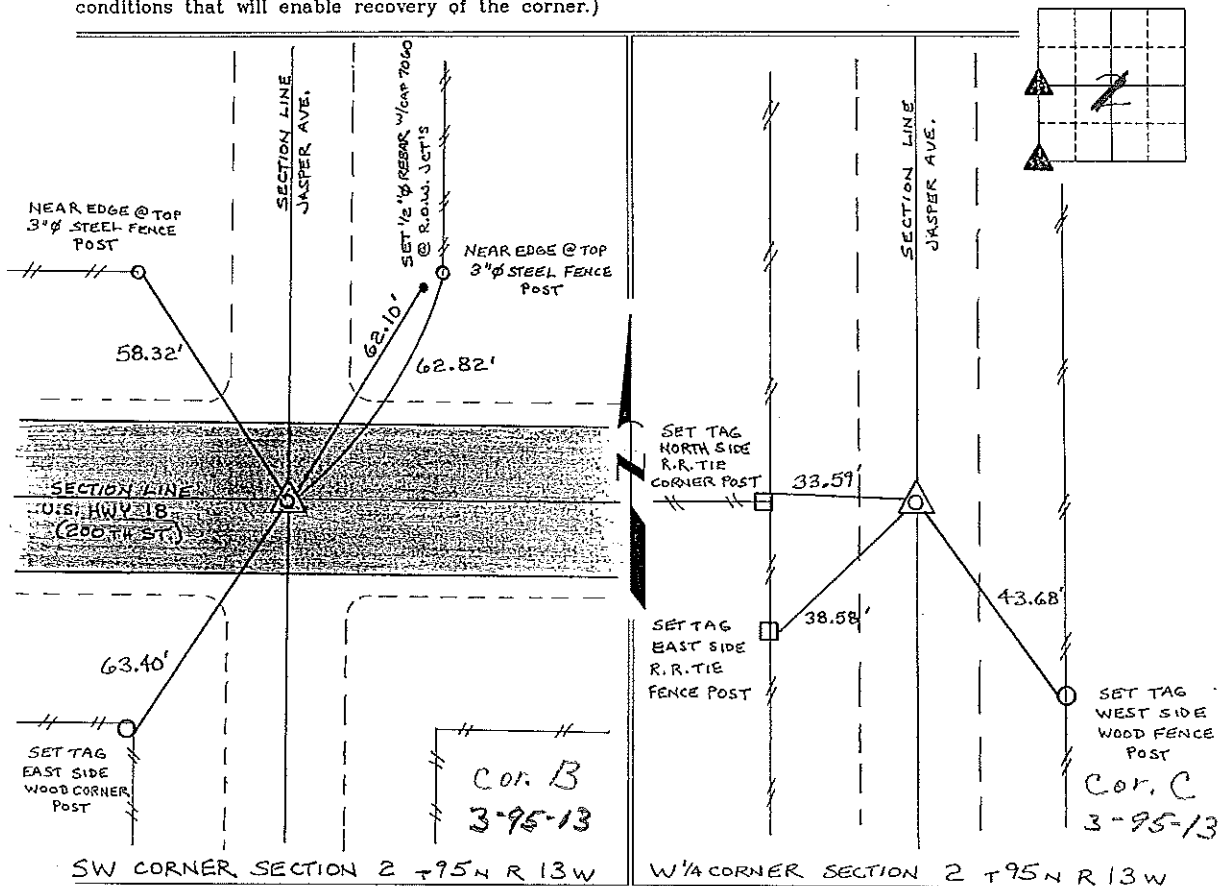
(Show reason for preparing this certificate, the evidence and detailed procedures used in establishing the corner positions and monumentation found or placed.)

Monument Description and Remarks: SW CORNER SECTION 2 T95N R13W: FOUND IOWA D.O.T. ALUMINUM MONUMENT.

W 1/4 CORNER SECTION 2 T95N R13W: FOUND 5/8" Ø IRON PIN, FROM INFORMATION ON A SURVEY AND PLAT MADE BY ROGER D. HANSON, RECORDED MARCH 14, 1967, DEEDS BOOK 94, PAGE 377-378

PLAN - VIEW

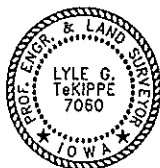
(Show a minimum of three reference ties to durable physical objects, relevant monuments and physical conditions that will enable recovery of the corner.)



SW CORNER SECTION 2 T95N R13W

W 1/4 CORNER SECTION 2 T95N R13W

I hereby certify that this land surveying document was prepared and the related survey work was performed by me or under my direct personal supervision and that I am a duly licensed Land Surveyor under the laws of the State of Iowa.



Lyle G. Tekippe 7-14-97
Lyle G. Tekippe Date
License number 7060
My license renewal date is December 31, 1998.
Sheets covered by this seal: Individual

List Corners to be Indexed

Corners	Section	Twp.	Range
SW	2	95N	13W
Cor B	3-95-13	(DAYTON)	13W
W 1/4	2	95N	13W
Cor C	3-95-13	(DAYTON)	

Placed in the book 8/12/97

"County Engineer's Copy"