

Prepared by & Return to: Herold - Reicks Surveying, 13 East Main Street, New Hampton, IA 50659, Ph. 641-394-2725

### UNITED STATES PUBLIC LAND SURVEY CORNER CERTIFICATE

Land Survey Monuments situated in Section 3, Township 95 North, Range 13 West of the Fifth Principal Meridian, Chickasaw County, Iowa. Previously recorded in Bk. , Pg. in the County Recorder's office.

This certificate is being prepared in compliance with Iowa Code Chapter 355.11 because:

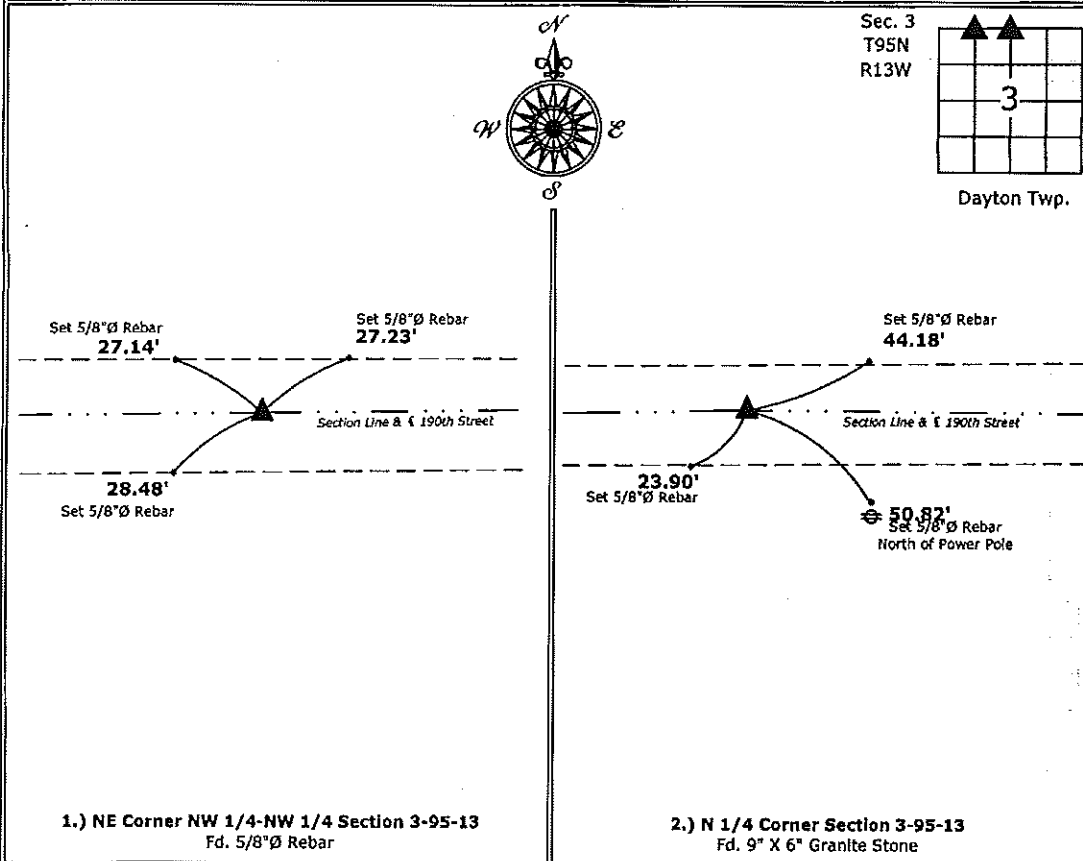
- 1 & 2  There is no certificate on file for this corner.  
 There are no longer three valid ties of record.  
 There are changes to reference ties of record.  
 There is change of monumentation of record.  
 To clarify description of record monument (ties).

Monument Description and Remarks:

- NE Corner NW 1/4-NW 1/4:** Fd. 5/8"Ø Rebar from information on a Survey and Plat made by Thomas V. Craft, recorded November 29, 1990, Book 146, Page 85.
- N 1/4 Corner:** Fd. 9" X 6" Granite Stone, Placed Cut-X on Stone and Set a 5/8"Ø Rebar w/2"Ø Alum. Cap PLS 15525 0.38' SW of Stone as Reference, Corner recover from information obtained from the County Engineers Record, Washington Twp. Ties to Corners, Section 33, Corner "A"

#### PLAN - VIEW

(Show a minimum of three reference ties to durable physical objects, relevant monuments and physical conditions that will enable recovery of the corner.)



1.) NE Corner NW 1/4-NW 1/4 Section 3-95-13  
 Fd. 5/8"Ø Rebar

2.) N 1/4 Corner Section 3-95-13  
 Fd. 9" X 6" Granite Stone



I hereby certify that this land surveying document was prepared and the related survey work was performed by me or under my direct personal supervision and that I am a duly licensed Land Surveyor under the laws of the State of Iowa.  
*Paul R. Herold* 7-8-14  
 Paul R. Herold Date:  
 License number 15525  
 My license renewal date is December 31, 2014.  
 Sheets covered by this seal: Individual sheet only

List Corners to be Indexed			
Corners	Section	Twp.	Range
NE-NW-NW	3	95	13
N 1/4	3	95	13

Project Number: 2014-045  
 FB: Chickasaw County 6, Pgs. 31-34

File: S:\\_CSD Projects\County Control Systems\CHICKASAW\CHICK-27\CHICK-27.dwg, 7/8/2014 10:35:17 AM