

Section 34-96-13
 As referred to in
 Eng. Tie Book

TeKIPPE ENGINEERING, P.C., 128 South Vine Street, West Union, Iowa 52175 Phone (319) 422-5131

UNITED STATES PUBLIC LAND SURVEY CORNER CERTIFICATE

OF 21 ⁰¹
 Land Survey Monuments situated in Section 2, Township 95 North, Range 13 West, of the Fifth Principal Meridian, CHICKASAW County, Iowa.
 Previously recorded in NONE in County Recorder's Office.
(book, page, document number, etc.)

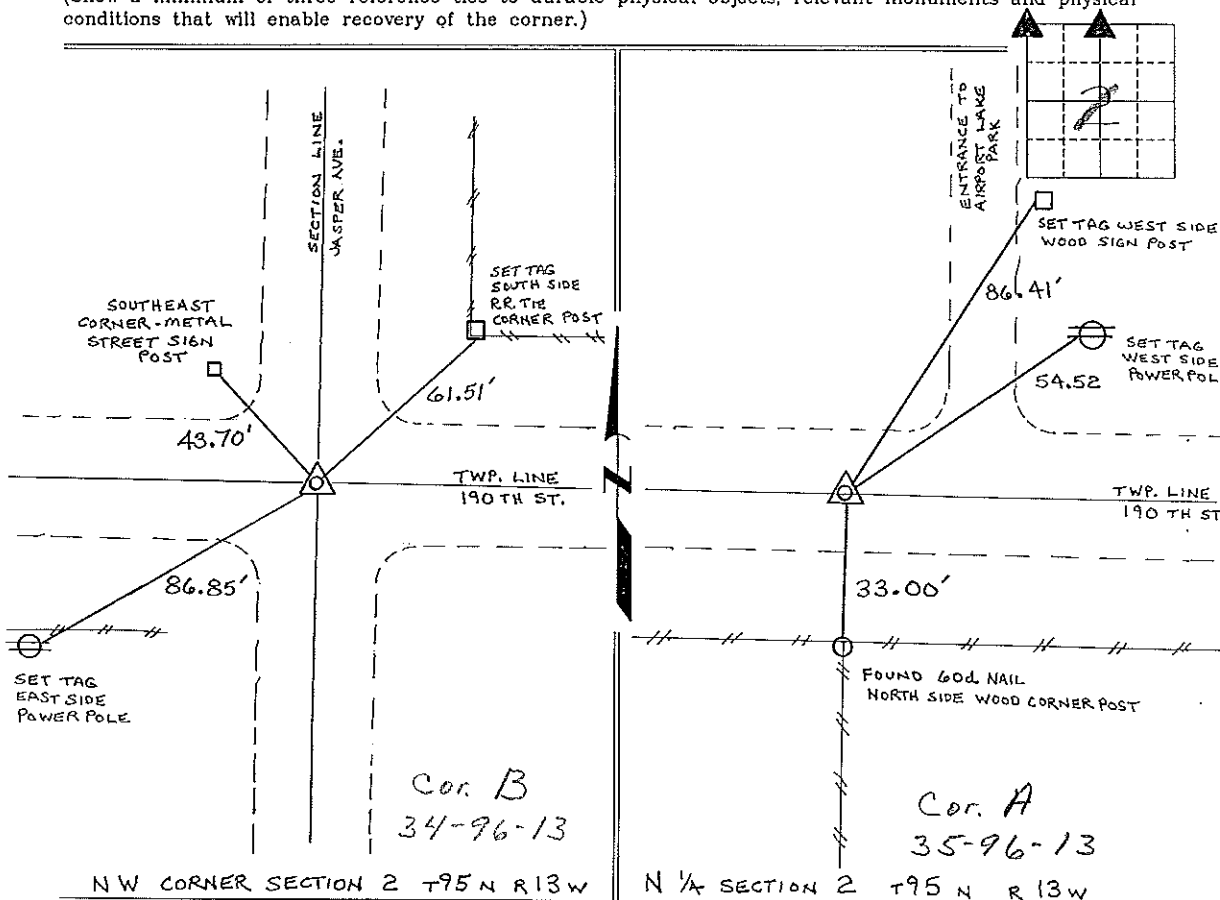
(Show reason for preparing this certificate, the evidence and detailed procedures used in establishing the corner positions and monumentation found or placed.)

Monument Description and Remarks: NW CORNER SECTION 2 T95 N R13W:
FD 1" SQUARE IRON BAR, FROM INFORMATION OBTAINED FROM THE COUNTY ENGINEERS OFFICE
IN FIELD BOOK "LOWER WASHINGTON CORNER TIES".

N 1/4 CORNER SECTION 2 T95 N R13W: SET 1/2" ϕ REBAR w/CAP 7060 FROM
SINGLE TIE ON THE LINE FENCE TO SOUTH, FROM INFORMATION OBTAINED FROM THE COUNTY
ENGINEERS OFFICE, IN FIELD BOOK "LOWER WASHINGTON CORNER TIES".

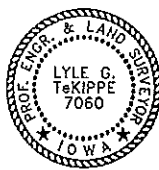
PLAN - VIEW

(Show a minimum of three reference ties to durable physical objects, relevant monuments and physical conditions that will enable recovery of the corner.)



I hereby certify that this land surveying document was prepared and the related survey work was performed by me or under my direct personal supervision and that I am a duly licensed Land Surveyor under the laws of the State of Iowa.

Lyle G. Tekippe 7-14-97
 Lyle G. Tekippe Date
 License number 7060
 My license renewal date is December 31, 1999.
 Sheets covered by this seal: Individual



List Corners to be Indexed			
Corners	Section	Twp.	Range
NW	2	95 N	13 W
Corner B	34-96-13	(WASH.)	
N 1/4	2	95 N	13 W
Corner A	35-96-13	(WASH.)	

Placed in tie book 8/12/97

"County Engineer's Copy"