

Chickasaw Co. Recorder
 Cindy Messersmith
Fee Book 2014-0869
 07/08/2014 @11:06AM
 SCC: SEC COR CERT # Pages: 1
 Book: Page:
 Total Fees: \$7.00

Prepared by & Return to: Herold - Recks Surveying, 10 East Main Street, New Hampton, IA 50659, Ph. 641-394-2725

UNITED STATES PUBLIC LAND SURVEY CORNER CERTIFICATE

Land Survey Monuments situated in Section 4, Township 95 North, Range 13 West of the Fifth Principal Meridian, Chickasaw County, Iowa. Not previously recorded in the County Recorder's office.

This certificate is being prepared in compliance with Iowa Code Chapter 355.11 because:

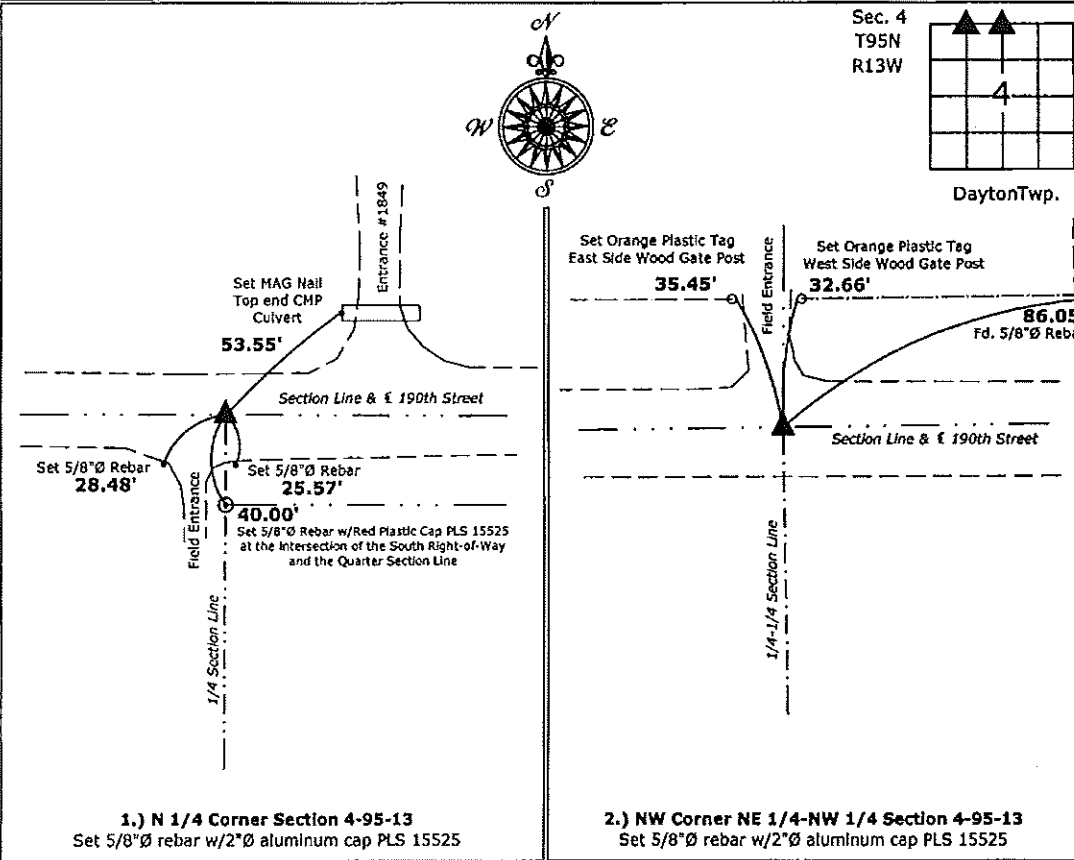
1 & 2 There are no certificates on file for these corners.
 There are no longer three valid ties of record.
 There are changes to reference ties of record.
 1 There is change of monumentation of record.
 To clarify description of record monument (ties).

Monument Description and Remarks:

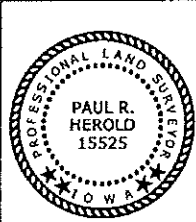
- N 1/4 Corner:** Fd. 5/8"Ø Rebar 18" deep, raised with a 5/8"Ø Rebar w/ 2"Ø Alum. Cap PLS 15525 in order to perpetuate the monument position, Corner was found from information in the Chickasaw County Engineer's Field Book, Washington Twp. Ties to Corners, Section 33, Corner "A".
- NW Corner NE 1/4-NW 1/4:** Set 5/8"Ø Rebar w/ 2"Ø Alum. Cap PLS 15525, equidistant and on line between the NW Corner and the N 1/4 Corner, there is no record of the perpetuation of this corner position.

PLAN - VIEW

(Show a minimum of three reference ties to durable physical objects, relevant monuments and physical conditions that will enable recovery of the corner.)



File: S:_CAD Projects\County Control Systems\CHICKASAW\CHICK-27\CHICK-27.dwg, 7/7/2014 5:27:18 PM



I hereby certify that this land surveying document was prepared and the related survey work was performed by me or under my direct personal supervision and that I am a duly licensed Land Surveyor under the laws of the State of Iowa.

Paul R. Herold 7-8-14
 Paul R. Herold Date:
 License number 15525
 My license renewal date is December 31, 2014.
 Sheets covered by this seal: Individual sheet only

List Corners to be Indexed			
Corners	Section	Twp.	Range
N 1/4	4	95	13
NW-NE-NW	4	95	13

Project Number: 2014-045
 FB: Chickasaw County 6, Pgs. 31-34