

Chickasaw Co. Recorder
 Cindy Messersmith
Fee Book 2014-1206
 08/29/2014 @0911AM
 SCC SEC COR CERT # Pages: 1
 Book: Page: Total Fees: \$7.00

Prepared by & Return to: Harold - Reicks Surveying, 10 East Main Street, New Hampton, IA 50659, Ph. 641-394-2726

UNITED STATES PUBLIC LAND SURVEY CORNER CERTIFICATE

Land Survey Monuments situated in Section 5, Township 95 North, Range 13 West of the Fifth Principal Meridian, Chickasaw County, Iowa. Previously not recorded in the County Recorder's office.

This certificate is being prepared in compliance with Iowa Code Chapter 355.11 because:

- 1 & 2 There is no certificate on file for this corner.
- There are no longer three valid ties of record.
- There are changes to reference ties of record.
- There is change of monumentation of record.
- To clarify description of record monument (ties).

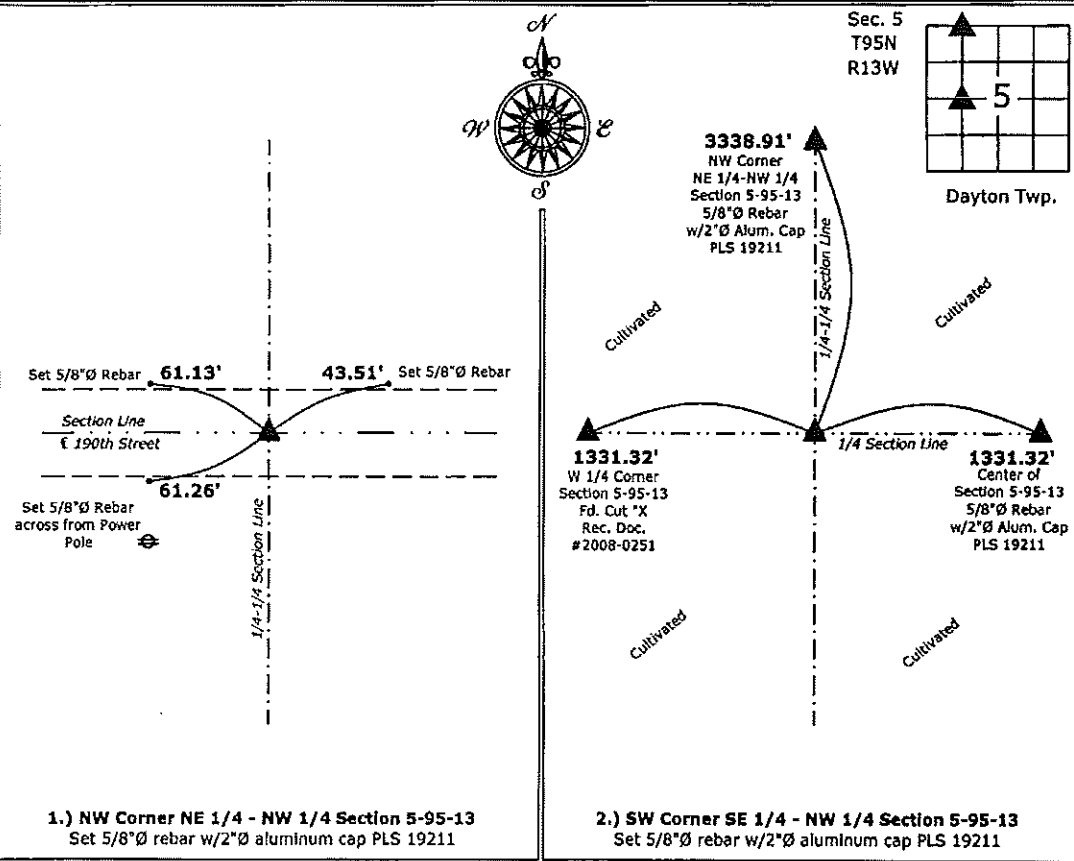
Monument Description and Remarks:

1.) Northwest Corner NE 1/4 - NW 1/4: Set 5/8"Ø rebar with 2"Ø aluminum cap PLS 19211 equidistant and online between the Northwest and North Quarter Corners of Section 5.

2.) Southwest Corner SE 1/4 - NW 1/4: Set 5/8"Ø rebar with 2"Ø aluminum cap PLS 19211 equidistant and online between the West Quarter Corner and Center of Section 5.

PLAN - VIEW

(Show a minimum of three reference ties to durable physical objects, relevant monuments and physical conditions that will enable recovery of the corner.)



1.) NW Corner NE 1/4 - NW 1/4 Section 5-95-13
 Set 5/8"Ø rebar w/2"Ø aluminum cap PLS 19211

2.) SW Corner SE 1/4 - NW 1/4 Section 5-95-13
 Set 5/8"Ø rebar w/2"Ø aluminum cap PLS 19211



I hereby certify that this land surveying document was prepared and the related survey work was performed by me or under my direct personal supervision and that I am a duly licensed Land Surveyor under the laws of the State of Iowa.
Kirk D. Reicks 8-28-14
 Kirk D. Reicks Date:
 License number 19211
 My license renewal date is December 31, 2014.
 Sheets covered by this seal: Individual sheet only

List Corners to be Indexed			
Corners	Section	Twp.	Range
NW-NE-NW	5	95	13
SW-SE-NW	5	95	13

Project Number: 2014-159
 FB: Chickasaw County 6, Pgs. 54-55

File: S:_CAD Projects\County Control Systems\CHICKASAW\CHICK-27\CHICK-27.dwg, 8/25/2014 5:33:17 PM