

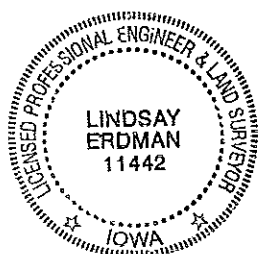
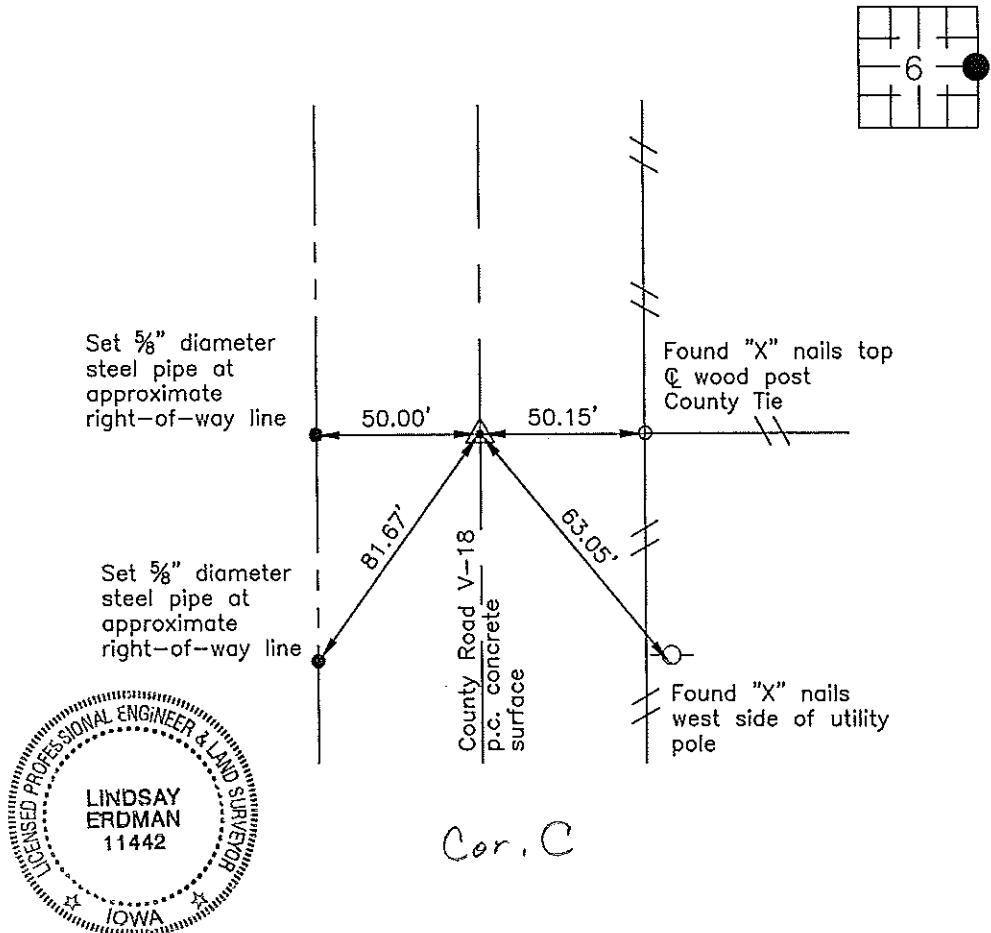
Prepared by: Erdman Engineering, P.C., 708 Commerce Drive, P.O. Box 246, Decorah, Iowa 52101 (563) 382-4194

United States Public Land Survey Corner Certificate
 of

Land Survey Monuments situated in Section 6, Township 95, Range 13 West of the 5th Principal Meridian in Chickasaw County, Iowa. Previously recorded in does not apply in the county Recorder's Office.

Monument Description and Remarks: This certificate is prepared in accordance with Section 193C of the Code of Iowa. No previous certificate has been filed for this corner location. Chickasaw County Engineer's Reference Ties show that a nail was set in the asphalt mat in 1971 and retied in 1981. Based on the reference ties we found two sets of "X" nails that had been used previously as tie markers. From these ties we found an "X" cut in the concrete pavement 0.75' east of the centerline joint that matches the ties. We used the "X" as the E 1/4 Corner of Section 6, Township 95 North, Range 13 West.

Plan-View



Cor. C

I hereby certify that this land surveying document was prepared and the related survey work was performed by me or under my direct personal supervision and that I am a duly licensed Land Surveyor under the laws of the State of Iowa.

Signature Lindsay Erdman
 Lindsay Erdman, P.E. and P.L.S. Iowa License Number 11442

Date: 2/8/08

My license renewal date is December 31, 2008

Corner(s) to be Indexed

Corner	Section	Township	Range
E 1/4	6	95	13