



Prepared by & Return to: Herold - Reicks Surveying, 10 East Main Street, New Hampton, IA 50659, Ph. 641-391-2725

United States Public Land Survey Corner Certificate

Land Survey Monument situated in
 Section 6, Township 95 North, Range 13 West of the Fifth Principal Meridian, Chickasaw County, Iowa.
 On file in Document #2008-0250 in the County Recorder's office.

This certificate is being prepared in compliance with Iowa Code Chapter 355.11 because:

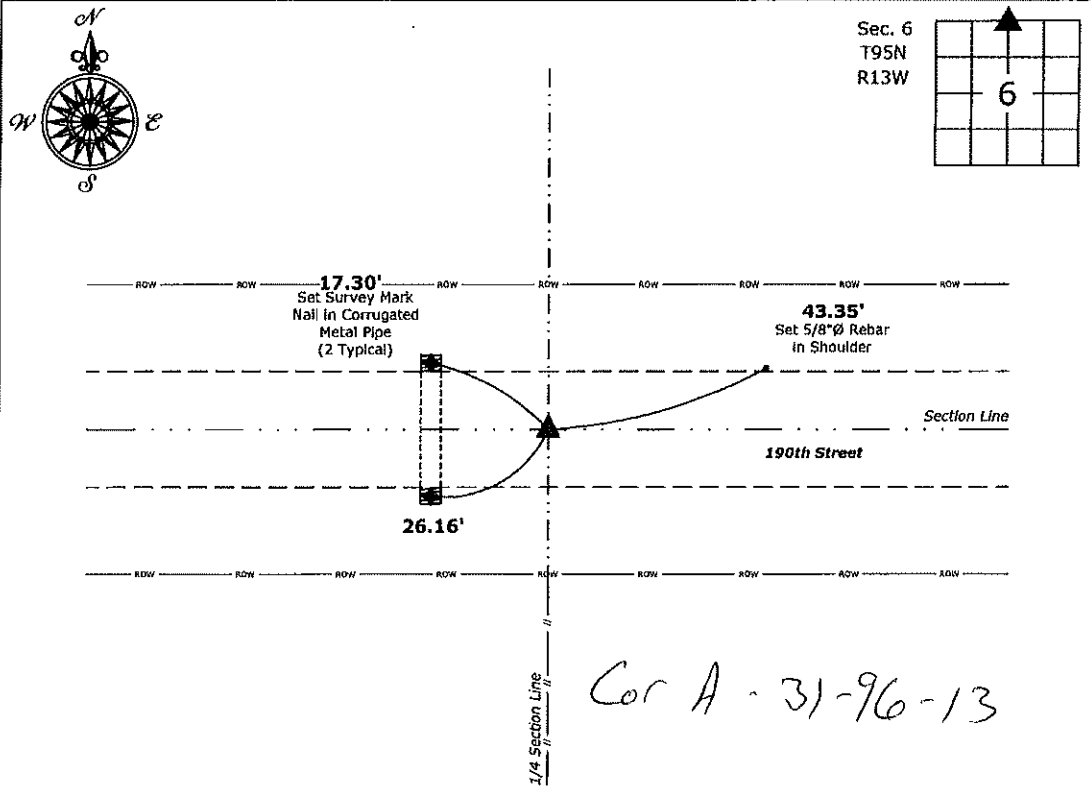
- There is no certificate on file for this corner.
- There are no longer three valid ties of record.
- There are changes to reference ties of record.
- There is change of monumentation of record.
- To clarify description of record monument (ties).

Monument Description and Remarks:

North 1/4 Corner: Previous Recorded Monument and Ties have been removed by construction of CMP. Set 5/8"Ø Rebar with Aluminum Cap PLS 19211 at the record location with information obtained from a Survey and Plat, as recorded in Document #2006-1005 on file in the County Recorder's Office.

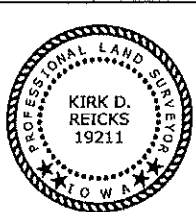
Plan View

(Show a minimum of three reference ties to durable physical objects, relevant monuments and physical conditions that will enable recovery of the corner.)



Cor A - 31-96-13

North 1/4 Corner of Section 6-95-13
 Set 5/8"Ø Rebar w/2"Ø Aluminum Cap PLS 19211



I hereby certify that this land surveying document was prepared and the related survey work was performed by me or under my direct personal supervision and that I am a duly licensed Land Surveyor under the laws of the State of Iowa.
Kirk D. Reicks 4-3-2020
 Kirk D. Reicks Date:
 License number 19211
 My license renewal date is December 31, 2020.
 Sheets covered by this seal: Individual sheet only

List Corner to be Indexed			
Corner	Section	Twp.	Range
N 1/4	6	95	13
Project Number: 2020-026			
FB: Chickasaw 10, Pgs. 15-16			

File: S:_Projects - NHO\County Control Systems - NHO\CHICKASAW\CHICK-27\CHICK-27 - 2020.dwg, 4/3/2020 3:19:43 PM

Prepared by: Erdman Engineering, P.C., 708 Commerce Drive, P.O. Box 246, Decorah, Iowa 52101 (563) 382-4194

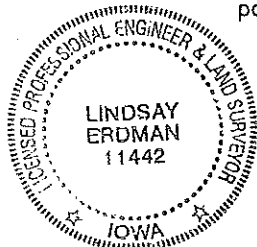
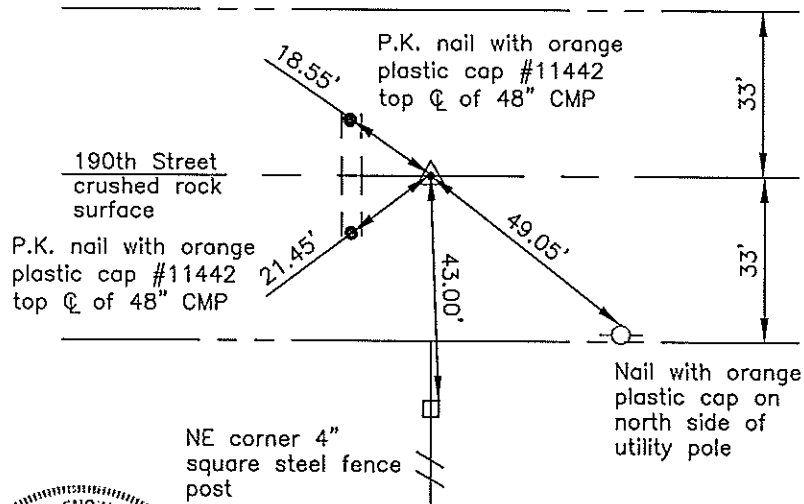
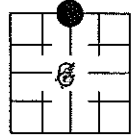
*Section 31-97-13
 As referred to in
 Engr. Tie Book*

United States Public Land Survey Corner Certificate

Land Survey Monuments situated in Section 6 of 31 97
 the 5th Principal Meridian in Chickasaw County, Iowa. Previously recorded in
does not apply in the county Recorder's Office.

Monument Description and Remarks: This certificate is prepared in accordance with Section 193C of the Code of Iowa. No previous certificate has been filed for this corner location. Chickasaw County Engineer's Reference Ties show that a "wagon skein box" was found and a oak hub set in 1945. We did not find any of the reference ties that were previously used as they appear to have been removed. We dug a 2' x 2' hole 2' deep at the center of the 66' wide county road right-of-way and in line with the fence line running south. We did not find the hub or wagon skein box. We set a 1/2" diameter steel bar with 1 1/2" aluminum cap #11442 at the center of the 66' wide county road right-of-way and in line with the fence line running south as the N 1/4 corner of Section 6, Township 95 North, Range 13 West.

Plan-View



*Cor A
 31-97-13*

I hereby certify that this land surveying document was prepared and the related survey work was performed by me or under my direct personal supervision and that I am a duly licensed Land Surveyor under the laws of the State of Iowa.

Signature: *Lindsay Erdman*
 Lindsay Erdman, P.E. and P.L.S. Iowa License Number 11442

Date: 2/8/08

My license renewal date is December 31, 2008

Corner(s) to be Indexed

Corner	Section	Township	Range
N 1/4	6	95	13