

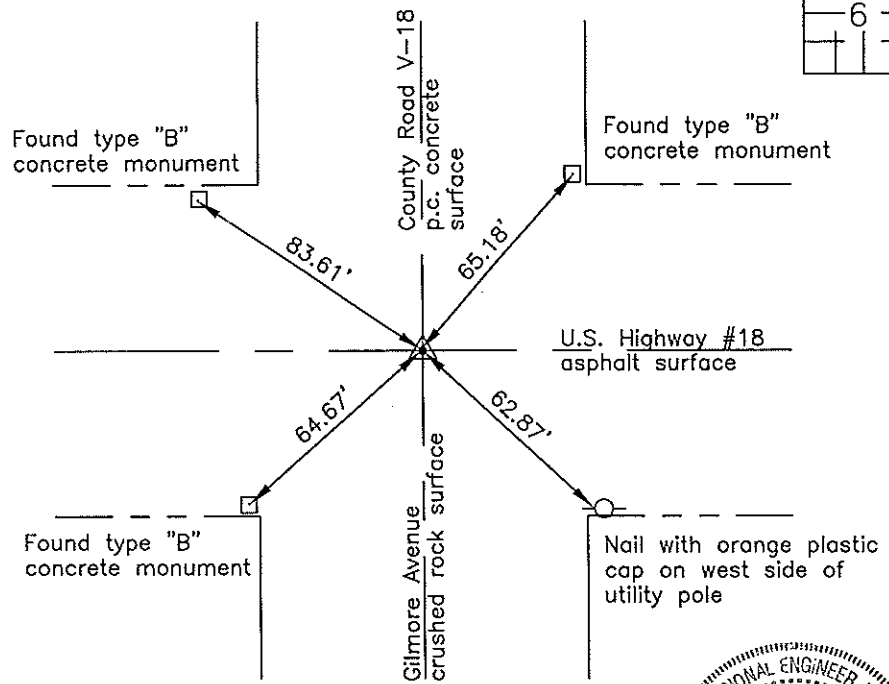
Prepared by: Erdman Engineering, P.C., 708 Commerce Drive, P.O. Box 246, Decorah, Iowa 52101 (563) 382-4194

United States Public Land Survey Corner Certificate  
of

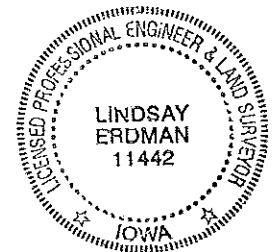
Land Survey Monuments situated in Section 6, Township 95, Range 13 West of the 5th Principal Meridian in Chickasaw County, Iowa. Previously recorded in does not apply in the county Recorder's Office.

Monument Description and Remarks: This certificate is prepared in accordance with Section 193C of the Code of Iowa. No previous certificate has been filed for this corner location. Based on Chickasaw County Engineer's Reference Ties we found three type "B" concrete monuments used previously as tie markers. From these ties we found a nail with 1 1/2" diameter stainless steel washer stamped "IDOT". Chickasaw County Engineer's Reference Ties show that a stone and an iron pin had been previously found at the SE Corner. We used the nail and washer as the SE Corner of Section 6, Township 95 North, Range 13 West as it appears to have been set over the iron pin after the asphalt overlay was placed.

Plan-View



Cor B



I hereby certify that this land surveying document was prepared and the related survey work was performed by me or under my direct personal supervision and that I am a duly licensed Land Surveyor under the laws of the State of Iowa.

Signature Lindsay Erdman  
Lindsay Erdman, P.E. and P.L.S. Iowa License Number 11442

Date: 2/8/08

My license renewal date is December 31, 2008

Corner(s) to be Indexed

Corner	Section	Township	Range
SE	6	95	13